

LONSEAL[®]

SPECIALTY FLOORING



AIRCRAFT



MARINE



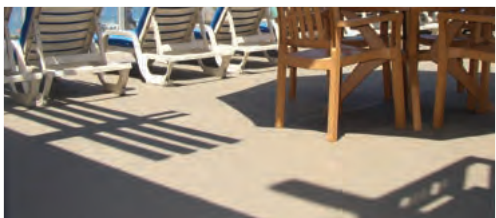
MILITARY



SPECIALTY
VEHICLES



EXHIBITS &
ENTERTAINMENT



EXTERIOR
DECKING



ABOUT LONSEAL®

Celebrating over 52 years of durability and performance in a variety of commercial industries, Lonseal® offers a unique selection of resilient sheet vinyl in exterior and interior, embossed, smooth, fitness and wood-grain surfaces. We provide finishes of exceptional beauty and utility which are economical as they are exhilarating. Servicing the unique demands of market-specific installations, from the areas of aviation and marine to emergency vehicles and entertainment stages.

Our smooth, embossed, and wood-grain finishes offer slip-resistance, sound-dampening, and cushioned-step features, as well as eco-friendly and antimicrobial attributes. With unrivaled dimensional patterns that have proven themselves in countless installations, Lonseal offers a surface solution to all specialized flooring needs.

Most of the Lonseal products feature **GreenMedic®**, a formulation to inhibit the growth of bacteria that may affect the flooring. *(Please note that properties do not protect users or others against bacteria, viruses, germs, and other disease organisms.)* Most of the Lonseal products also feature **GreenAir®**, which is a low VOC formulation that supports Indoor Air Quality (IAQ) standards. Both GreenAir and GreenMedic are exclusive to Lonseal.

COMPANY HISTORY:

Lonseal, Inc. is a subsidiary of Lonseal Corporation in Tokyo and was established in Southern California in 1972. The company quickly established itself as a provider of unique flooring designs with distinctive color choices. In the early 80s, Lonplate (page 14)— the original steel-plate design adapted to resilient flooring — put Lonseal on the map as a creator of innovative, embossed products. Additionally, Lonseal’s technological advances bolstered the company’s reputation as it infused products with pliable properties not associated with vinyl.



AFFILIATIONS, CERTIFICATIONS AND MEMBERSHIPS



EXCLUSIVE LONSEAL® FORMULATIONS



CONTENTS

Embossed	Page 2
Smooth	Page 18
Product Chart	Page 44

EMBOSSED

LONBEAD®



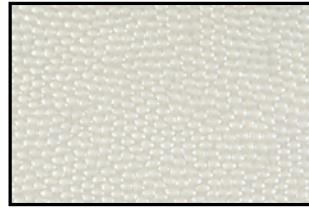
STUNNING PEARLESCENT

One of Lonseal's most striking offerings, LONBEAD® is a luxuriously textured surface consisting of small embossed, pearl-like drops that form a richly glossy and elegant design. The opulent color palette is timeless chic and has enlivened numerous display and marine installations.

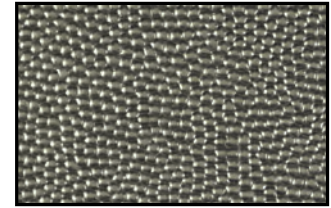
**Because of the light color of #B301 Opal, Lonseal highly recommends the use of six coats of finish. More frequent maintenance procedures are necessary to ensure a long lasting installation.*

FEATURES (data shown are nominal):

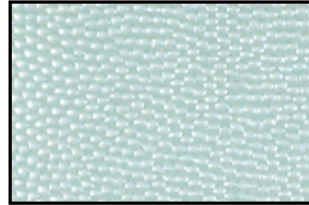
- Roll Width: 6 ft. (1.8 m)
- Roll Length: 60 ft. (18.3 m)
- Overall Thickness: 0.100 in. (2.5 mm)
- Wear Layer Thickness: 0.036 in. (0.9 mm)
- Weight: 0.8 lbs./sq. ft. (3.7 kg/m²)



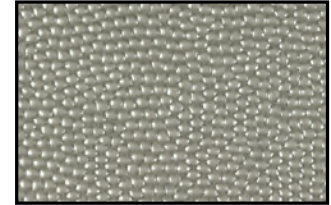
Part #: B301
Color: OPAL*



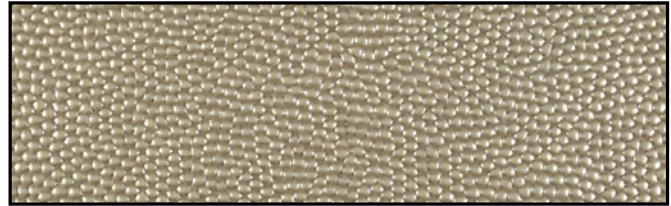
Part #: B303
Color: ONYX



Part #: B304
Color: AQUAMARINE



Part #: B305
Color: MOONSTONE



Part #: B306
Color: CHAMPAGNE GARNET

LONCOIN® I

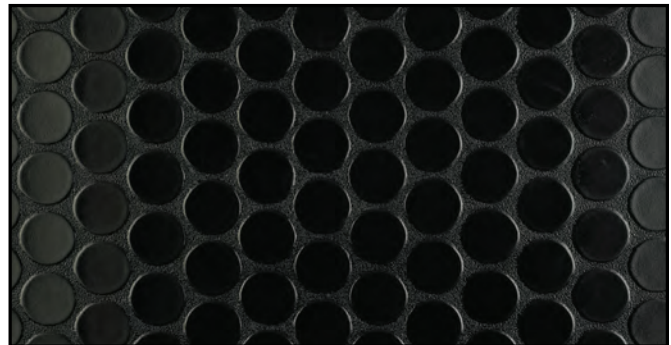


DECORATIVE AND FUNCTIONAL

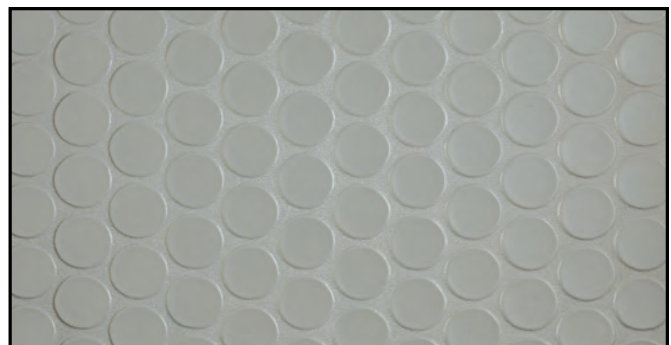
The Loncoin series boasts a coin surface embossing that delivers a striking directional design and a decorative touch that provides style and enhanced traction. LONCOIN® I is distinguished by a light texture around the coin shapes. It has been demonstrating its resilience in high-traffic areas for decades.

FEATURES (data shown are nominal):

- Roll Width: 6 ft. (1.8 m)
- Roll Length: 60 ft. (18.3 m)
- Overall Thickness: 0.100 in. (2.5 mm)
- Wear Layer Thickness: 0.032 in. (0.80 mm)
- Weight: 0.8 lbs./sq. ft. (3.8 kg/m²)



Part #: C123
Color: BLACK



Part #: C124
Color: GRAY

LONCOIN® II



DURABLE AND FUNCTIONAL

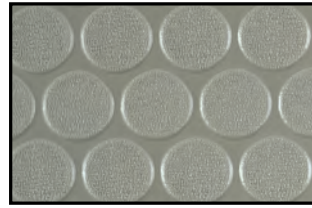
The Loncoin series boasts a coin surface embossing that delivers a striking directional design and a decorative touch that provides style, enhanced traction, functional, and hides scuffing. LONCOIN® II features a slight texture on the coin stamping which gives surface grip and helps mask scuffing.

**#CN183 Sonic Gray and #CN187 Cerulean Blue are iridescent colors, shifting from gray to blue as the angle of the view changes. Please request a sample swatch for color accuracy.*

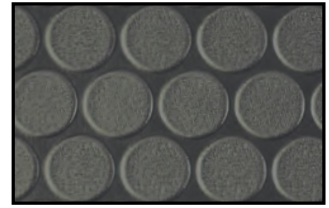
MEETS FMVSS 302:
CFR 49 §571.302 Flammability of Interior Materials

FEATURES (data shown are nominal):

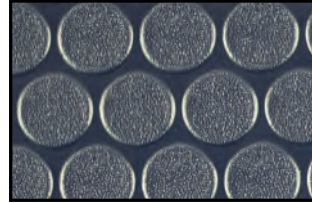
- Roll Width: 6 ft. (1.8 m) or 8 ft. (2.4 m)
- Roll Length: 60 ft. (18.3 m)
- Overall Thickness: 0.100 in. (2.5 mm)
- Wear Layer Thickness: 0.036 in. (0.9 mm)
- Wear Layer Thickness for CTB736: 0.032 in. (0.8 mm)
- Weight: 0.8 lbs./sq. ft. (4.0 kg/m²)



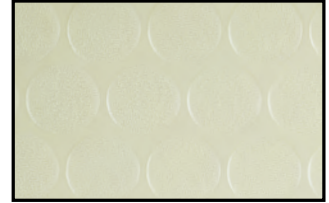
Part #: CN181
Color: NIMBUS GRAY



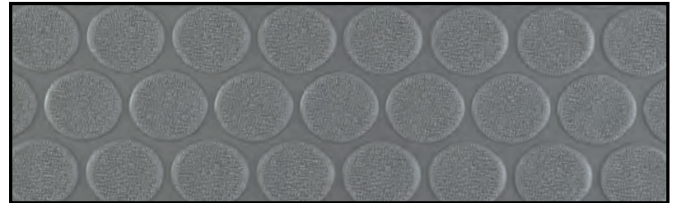
Part #: CN183
Color: SONIC GRAY*



Part #: CN187
Color: CERULEAN BLUE*



Part #: CN190
Color: BIRCH WHITE



Part #: CTB736
Color: STONE GRAY (only in 8 ft.)



LONCOIN II - STONE GRAY
NEW YORK FIRE DEPARTMENT TRUCK INTERIOR

EMBOSSED

LONCOIN® II FEATHERWEIGHT



AXIS AIRCRAFT COLLECTION: LONCOIN® II FEATHERWEIGHT

Constructed in three layers with excellent slip-resistance, sound-absorption and dimensional stability properties, LONCOIN® II FEATHERWEIGHT still manages to be 30% lighter than standard NTF products, potentially increasing fuel efficiency.

**#C2F9883M72/96 Sonic Gray and #C2F9887M72/96 Cerulean Blue are iridescent colors, shifting from gray to blue as the angle of view changes. Please request a sample swatch for color accuracy.*

MEETS FAA REQUIREMENTS:

FAR 25.853(a): 12-Second Vertical Flammability
 FAR 25.793: Factor of Sliding Friction

MEETS FMVSS 302:

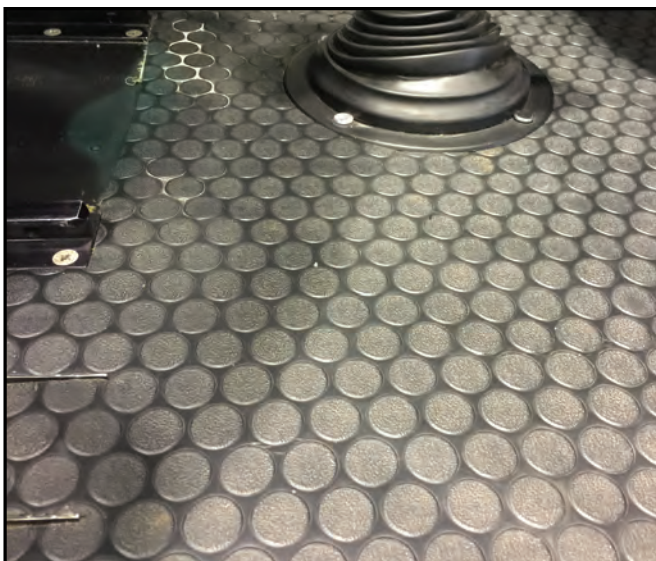
CFR 49 §571.302 Flammability of Interior Materials

EU REACH COMPLIANT FORMULATION

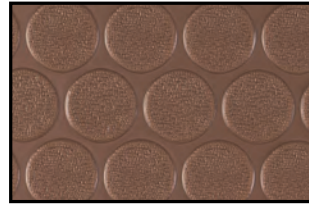
Phthalate free, SVHC free

FEATURES (data shown are nominal):

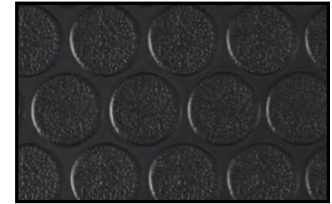
Roll Width: 6 ft. (1.8 m) or 8 ft. (2.4 m)
 Roll Length: 60 ft. (18.3 m)
 Overall Thickness: 0.092 in. (2.3 mm)
 Wear Layer Thickness: 0.032 in. (0.8 mm)
 Weight: 88 oz./sq. yd. (2984 g/m²)



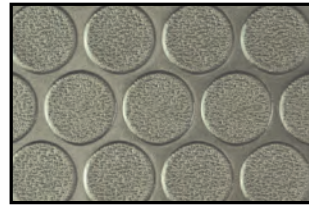
LONCOIN II FEATHERWEIGHT - SONIC GRAY
 AIRBUS HELICOPTER



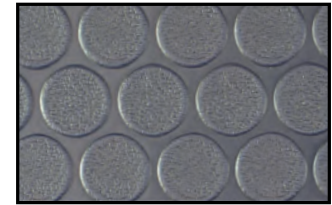
Part #: C2F9822M72 (6')
 Part #: C2F9822M96 (8')
 Color: BROWN



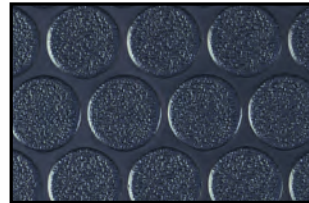
Part #: C2F9823M72 (6')
 Part #: C2F9823M96 (8')
 Color: BLACK



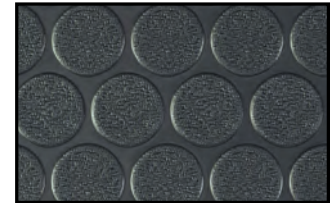
Part #: C2F9883M72 (6')
 Part #: C2F9883M96 (8')
 Color: SONIC GRAY*



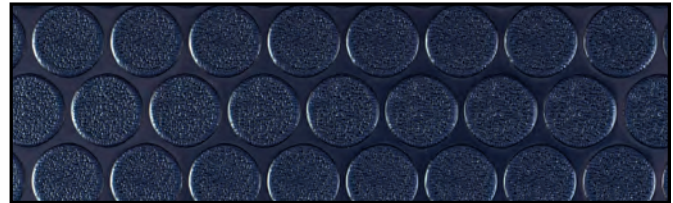
Part #: C2F9887M72 (6')
 Part #: C2F9887M96 (8')
 Color: CERULEAN BLUE*



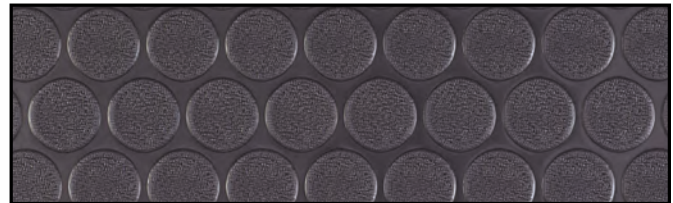
Part #: C2F9891M72 (6')
 Part #: C2F9891M96 (8')
 Color: DARK BLUE



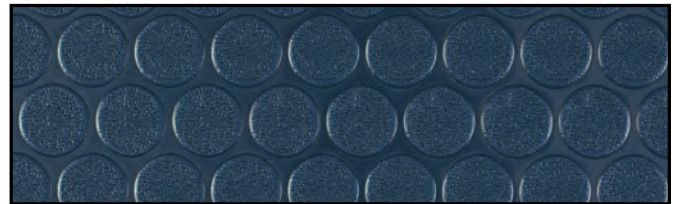
Part #: C2F9893M72 (6')
 Part #: C2F9893M96 (8')
 Color: MEDIUM GRAY



Part #: C2F9895M72 (6')
 Part #: C2F9895M96 (8')
 Color: NAVY BLUE

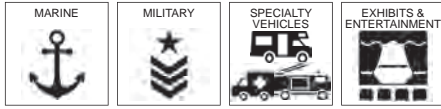


Part #: C2F9896M72 (6')
 Part #: C2F9896M96 (8')
 Color: PURPLE BLUE



Part #: C2F9899M72 (6')
 Part #: C2F9899M96 (8')
 Color: INDIGO

LONCOIN® II FLECKS



DURABLE, FUNCTIONAL, and HIDES SCUFFING

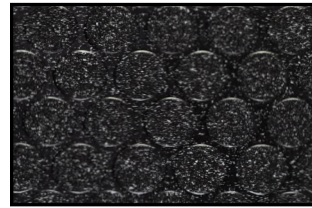
The Loncoin series boasts a coin surface embossing that delivers a striking directional design a decorative touch that provides style and enhanced traction. LONCOIN® II FLECKS adds a dazzling fleck coloration that provides camouflage for easier maintenance. It has a slightly deeper embossing than Loncoin II Flecks Topseal and Loncoin II Flecks UV.

MEETS FMVSS 302:
CFR 49 §571.302 Flammability of Interior Materials

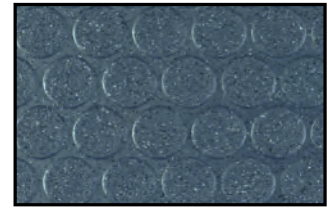
FEATURES (*data shown are nominal*):

- Roll Width: 6 ft. (1.8 m) or 8 ft. (2.4 m)
- Roll Length: 60 ft. (18.3 m)
- Overall Thickness: 0.100 in. (2.5 mm)
- Wear Layer Thickness: 0.032 in. (0.8 mm)
- Weight: 0.8 lbs./sq. ft. (3.9 kg/m²)

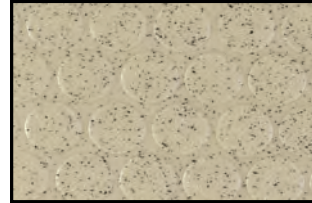
Please note that #C150 Onyx, #C152 Sapphire, #C154 Sandstone, and #C157 Moonstone are available in both 6 ft. (1.83 m) and 8 ft. (2.438 m) rolls. All other colors are available in 6 ft. (1.83 m) rolls only unless custom ordered.



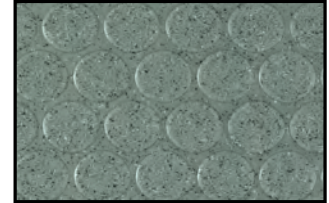
Part #: C150 (6 ft.)
Part #: C8150 (8 ft.)
Color: ONYX



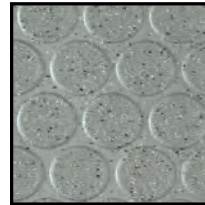
Part #: C152 (6 ft.)
Part #: C8152 (8 ft.)
Color: SAPPHIRE



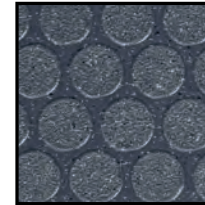
Part #: C154 (6 ft.)
Part #: C8154 (8 ft.)
Color: SANDSTONE



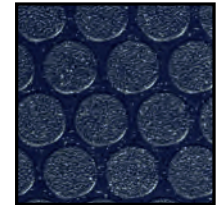
Part #: C155 (6 ft. only)
Color: JADE



Part #: C157 (6 ft.)
Part #: C8157 (8 ft.)
Color: MOONSTONE



Part #: C158 (6 ft.)
Color: SILICON



Part #: 159 (6 ft.)
Color: SODALITE

LONCOIN® II FLECKS TOPSEAL

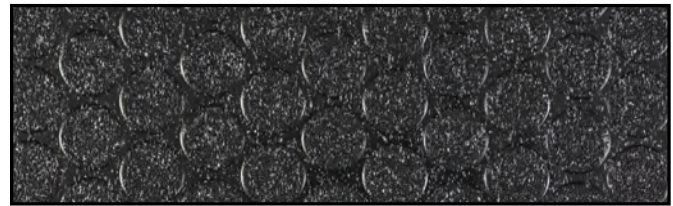


The Loncoin series boasts a coin surface embossing that delivers a striking directional design a decorative touch that provides style and enhanced traction. LONCOIN® II FLECKS TOPSEAL adds a dazzling fleck coloration that provides camouflage for easier maintenance. Topseal is Lonseal's factory-applied urethane finish that protects the floor, reduces scuffing and simplifies routine maintenance. Topseal is applied in a 15-micron wear layer and extends the life of the flooring by protecting it from wear due to staining, soiling and scuffing. It has a more matte appearance than the Loncoin II Flecks.

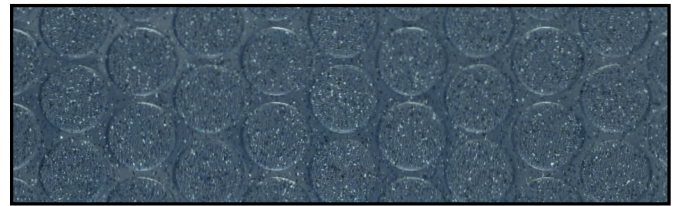
MEETS FMVSS 302:
CFR 49 §571.302 Flammability of Interior Materials

FEATURES (*data shown are nominal*):

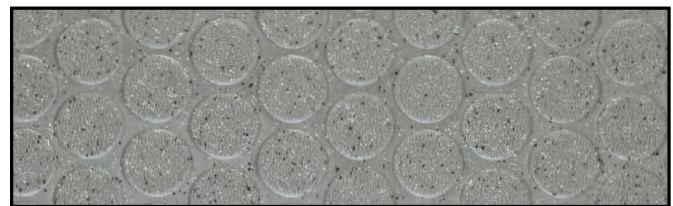
- Roll Width: 6 ft. (1.8 m)
- Roll Length: 60 ft. (18.3 m)
- Overall Thickness: 0.100 in. (2.5 mm)
- Wear Layer Thickness: 0.032 in. (0.8 mm)
- Weight: 0.8 lbs./sq. ft. (4.0 kg/m² ±10%)



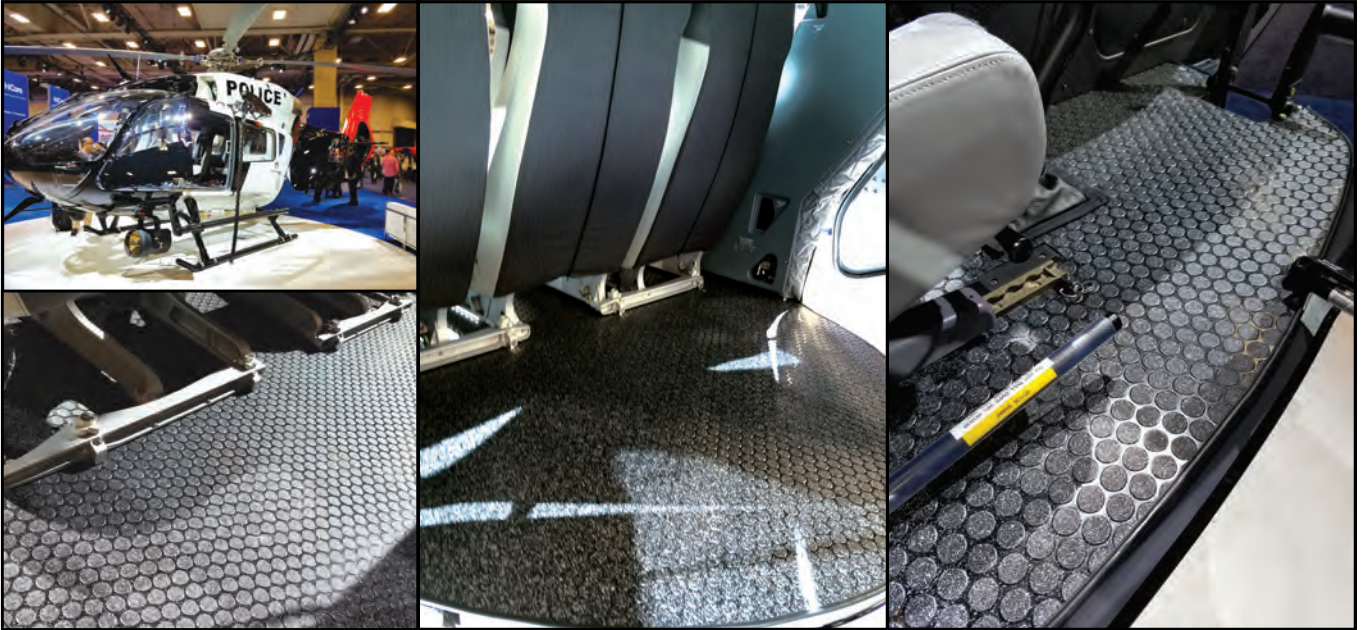
Part #: C150TS
Color: ONYX TOPSEAL



Part #: C152TS
Color: SAPPHIRE TOPSEAL



Part #: C157TS
Color: MOONSTONE TOPSEAL



LONPOLARIS - NOIR



LONCOIN II FEATHERWEIGHT - MEDIUM GRAY



LONCOIN II FLECKS - JADE



LONCOIN II FLECKS TOPSEAL - MOONSTONE



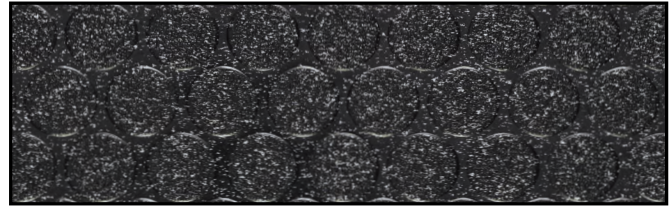
LONCOIN® II FLECKS UV



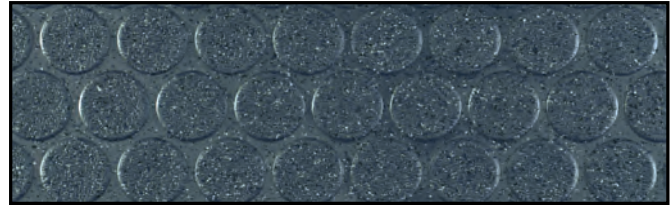
The Loncoin series boasts a coin surface embossing that delivers a striking directional design a decorative touch that provides style and enhanced traction. LONCOIN® II FLECKS UV adds an intriguing fleck coloration that provides camouflage and a high-gloss shine for a sparkling surface. It has a more glossy appearance than the Loncoin II Flecks.

MEETS FMVSS 302:
CFR 49 §571.302 Flammability of Interior Materials

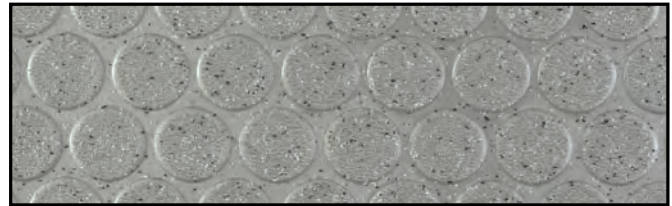
FEATURES *(data shown are nominal)*:
Roll Width: 6 ft. (1.8 m)
Roll Length: 60 ft. (18.3 m)
Overall Thickness: 0.100 in. (2.5 mm)
Wear Layer Thickness: 0.032 in. (0.8 mm)
Weight: 0.8 lbs./sq. ft. (3.9 kg/m² ±10%)



Part #: C150UV
Color: ONYX



Part #: C152UV
Color: SAPPHIRE



Part #: C157UV
Color: MOONSTONE

LONCOMMODORE®



MED AND USCG COMPLIANT

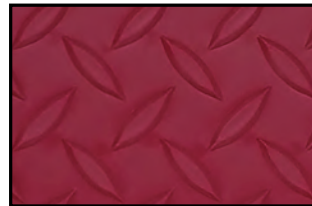
Offering the rugged endurance of classic steel plating, this durable resilient sheet flooring is Lonseal's toughest skid-resistant vinyl. Perfect for heavy-duty applications in all kinds of spaces.



MEETS MED 2014/90/EU Modules B&D
USCG CERTIFIED

EU REACH COMPLIANT FORMULATION
Phthalate free, SVHC free

FEATURES *(data shown are nominal)*:
Roll Width: 6 ft. (1.8 m)
Roll Length: 60 ft. (18.3 m)
Overall Thickness: 0.140 in. (3.5 mm)
Wear Layer Thickness: 0.060 in. (1.5 mm)
Weight: 0.8 lbs./sq. ft. (3.9 kg/m²)



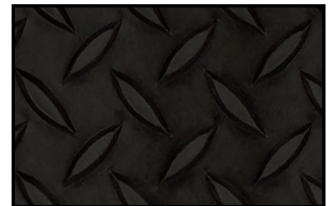
Part #: CM601
Color: POINEETIA



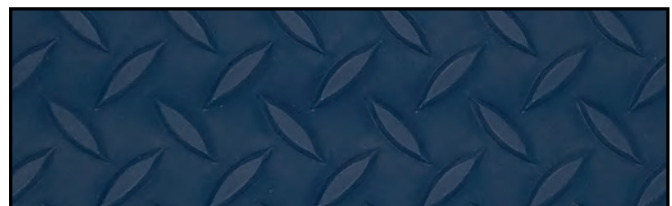
Part #: CM602
Color: SHARK SKIN



Part #: CM603
Color: OIL RUBBED BRONZE



Part #: CM604
Color: BLACK KETTLE



Part #: CM605
Color: DRESS BLUES

EMBOSSED

LONCOMPASS®



AXIS AIRCRAFT COLLECTION: LONCOMPASS®

The wider coin spacing pattern and bolder colors of LONCOMPASS® makes it an eye-catching option for both large and small spaces.

**CPF9352M72 Denim is an iridescent color shifting from gray to blue as the angle of view changes. Please request a sample swatch for color accuracy.*

MEETS FAA REQUIREMENTS:

FAR 25.853(a): 12-Second Vertical Flammability

FAR 25.793: Factor of Sliding Friction

MEETS FMVSS 302:

CFR 49 §571.302 Flammability of Interior Materials

EU REACH COMPLIANT FORMULATION

Phthalate free, SVHC free

FEATURES (data shown are nominal):

Roll Width: 6 ft. (1.8 m)

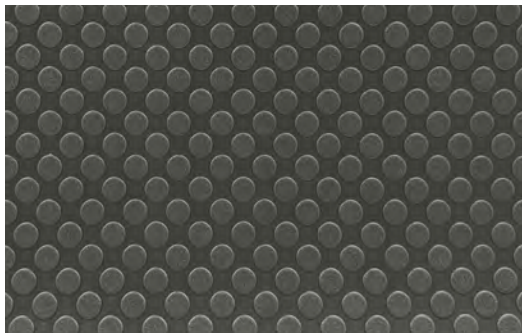
Roll Length: 60 ft. (18.3 m)

Overall Thickness: 0.092 in. (2.3 mm)

Wear Layer Thickness: 0.032 in. (0.8 mm)

Weight: 84 oz./sq. yd. (2848 g/m²)

LONCOMPASS® MT

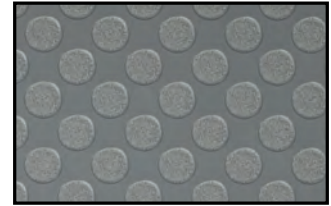


CPF9440M72
SLATE

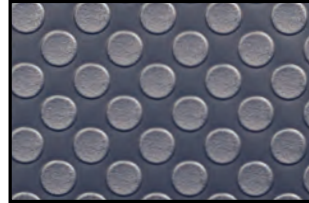
A matte version of the Loncompass, LONCOMPASS MT for aircraft embraces a subdued sophistication, seamlessly marrying functionality with aesthetic appeal. This specialized version of Loncompass, devoid of gloss, not only ensures a non-reflective environment but also showcases a modern, minimalist design tailored for the unique confines of aircraft spaces



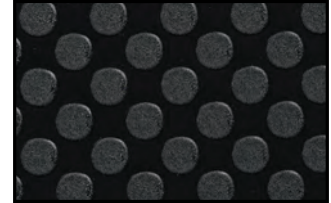
Part #: CPF9347M72
Color: CAMEL



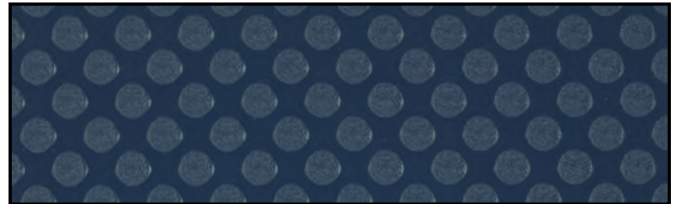
Part #: CPF9348M72
Color: GRAYSTONE



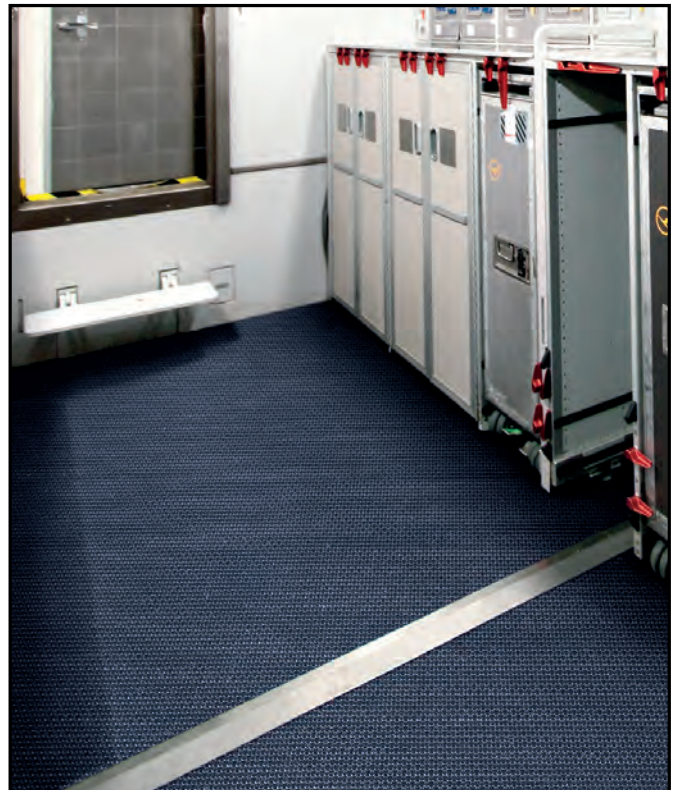
Part #: CPF9352M72
Color: DENIM*



Part #: CPF9353M72
Color: ASPHALT



Part #: CPF9395M72
Color: YALE BLUE



LONCOMPASS - YALE BLUE
AIRCRAFT GALLEY

LONDECK®



HIGH TRACTION VALUE and OUTDOOR TOLERANT

Lonseal's LONDECK® series features resilient exterior sheet vinyl with slightly embossed surfaces that withstand high volumes of pedestrian traffic and weather-wear. Because of its versatility, Londeck has been utilized in spaces such as pools and decks, as well as boats, EMS and other specialty vehicles. Though specifically designed for exterior spaces, the Londeck line is equally appropriate for interiors.

MEETS FMVSS 302:
CFR 49 §571.302 Flammability of Interior Materials

FEATURES (data shown are nominal):

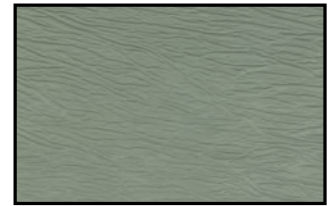
Roll Width: 6 ft. (1.8 m)
Roll Length: 60 ft. (18.3 m)
Overall Thickness: 0.08 in. (2.0 mm)
Wear Layer Thickness: 0.032 in. (0.8 mm)
Weight: 0.6 lbs./sq. ft. (3.1 kg/m²)



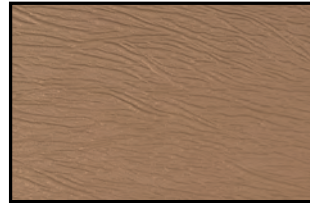
LONDECK - DARTMOUTH GRAY
BEACH HOTEL



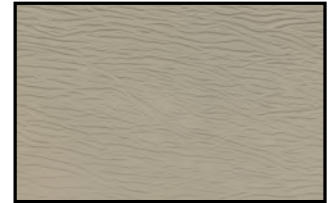
Part #: D750
Color: TUDOR BROWN



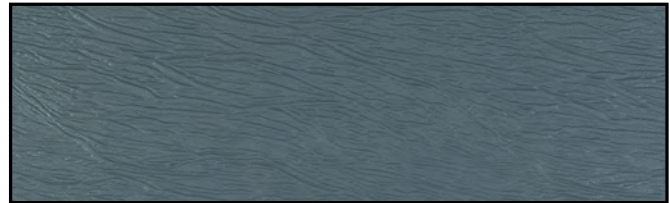
Part #: D752
Color: FAIRMONT GREEN



Part #: D753
Color: KENSINGTON BROWN



Part #: D754
Color: PACIFIC SAND



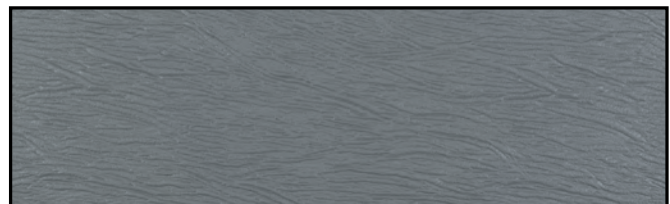
Part #: D758
Color: PHILIPSBURG BLUE



Part #: D759
Color: BRIARWOOD



Part #: D771
Color: SHAKER BEIGE



Part #: D776
Color: 776 DARTMOUTH GRAY

EMBOSSED

LONDECK® SIERRA



HIGH TRACTION VALUE and OUTDOOR TOLERANT

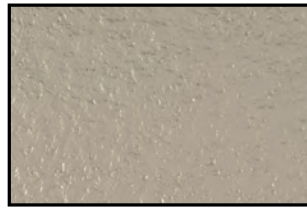
LONDECK® SIERRA features a unique crevassed texture. It is part of Lonseal's Londeck series of resilient exterior sheet vinyl with slightly embossed surfaces that withstand high volumes of pedestrian traffic and weather-wear. Because of its versatility, Londeck has been utilized in spaces such as pools and decks, as well as boats, EMS and other specialty vehicles.

**Please note that Sierra Cliff Face and Mount Tan are available in both 6 ft. (1.8 m) and 8 ft. 6 in. (2.6 m) widths. The 8 ft. 6 in. (2.6 m) wide versions have up to 3 in. (7.6 cm) total selvage, leaving approximately 8 ft. 3 in. (2.5 m) of usable width. All other colors are available in 6 ft. (1.8 m) width only unless custom ordered.*

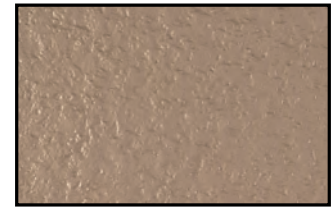
MEETS FMVSS 302:
CFR 49 §571.302 Flammability of Interior Materials

FEATURES (data shown are nominal):

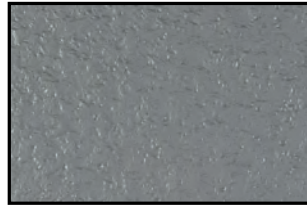
Roll Width: 6 ft. (1.8 m) or 8.5 ft. (2.6 m)
Roll Length: 60 ft. (18.3 m) or 75 ft. (22.9 m)
Overall Thickness: 0.080 in. (2.0 mm)
Wear Layer Thickness: 0.032 in. (0.8 mm)
Weight: 0.6 lbs./sq. ft. (2.8 kg/m²)



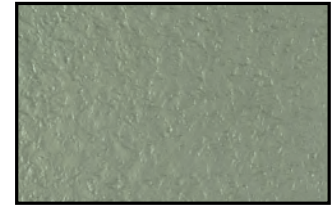
Part #: D721 (6')
Part #: D8721 (8' 6")
Color: CLIFF FACE*



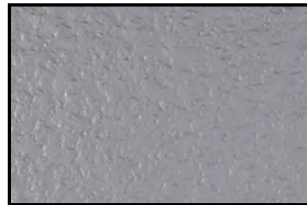
Part #: D723 (6')
Part #: D8723 (8' 6")
Color: MOUNT TAN*



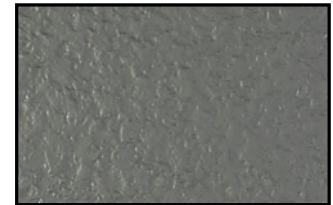
Part #: D725
Color: SIERRA STONE



Part #: D726
Color: FAIRMONT GREEN

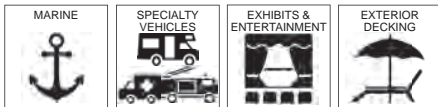


Part #: D727
Color: PLATINUM



Part #: D729
Color: TITANIUM

LONDECK® SOL



COOLTOUCH TECHNOLOGY

As part of Lonseal's exterior flooring series, LONDECK® SOL is a resilient exterior sheet vinyl with a CoolTouch technology that reflects the sun's rays and reduces the surface temperature up to 10%. Londeck Sol exhibits a leather grain pattern. It withstands high volumes of pedestrian traffic and weather-wear. Because of its versatility, Londeck Sol has been utilized in spaces such as pools and decks, as well as boats, EMS and other specialty vehicles.

Londeck Sol is available in a width of 8 ft. 6 in. (2.6 m) with up to 3 in. (7.6 cm.) total selvage, leaving approximately 8 ft. 3 in. (2.5 m) of usable width.

MEETS FMVSS 302:
CFR 49 §571.302 Flammability of Interior Materials

FEATURES (data shown are nominal):

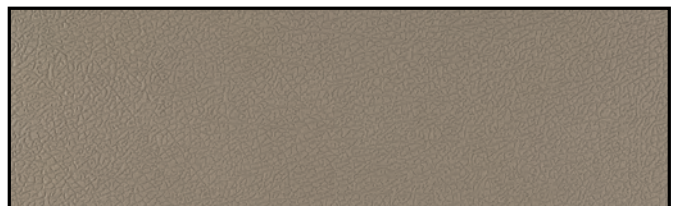
Roll Width: 8 ft. 6 in. (2.6 m)
Roll Length: 60 ft. (18.3 m)
Overall Thickness: 0.080 in. (2.0 mm)
Wear Layer Thickness: 0.032 in. (0.8 mm)
Weight: 0.6 lbs./sq. ft. (2.9 kg/m²)



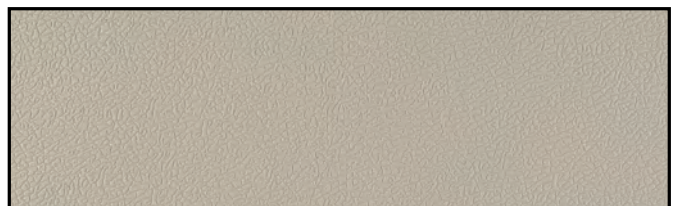
Part #: D991
Color: CLAY DUST



Part #: D992
Color: OVERCAST



Part #: D993
Color: PURE EARTH



Part #: D994
Color: DESERT KHAKI

LONECO® MESA



CLASSIC WOOD FIBERS INGRAINED and 50% RECYCLED CONTENT

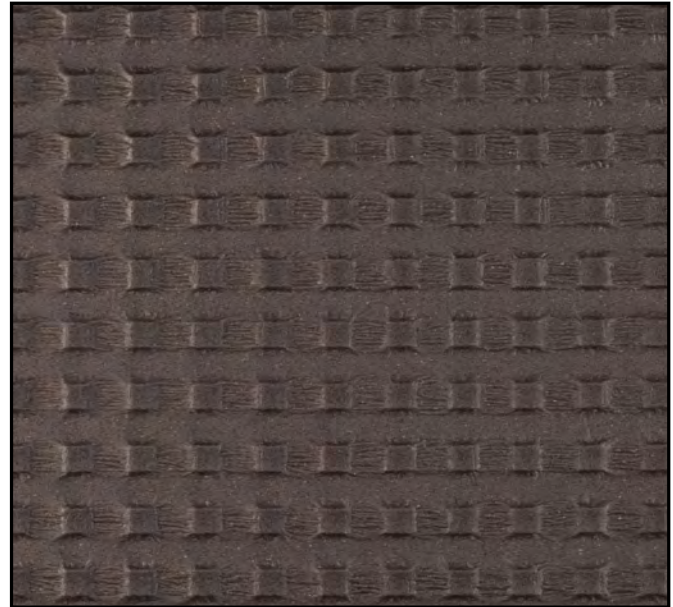
Featuring exclusive GreenAir® technology that significantly reduces VOC emission, LONECO® MESA provides an eco-friendly environment with superior indoor air quality and lower volatile organic emissions than other floors. The exclusive coloration provides excellent camouflage for scuffing and soil. Loneco Mesa's young, clean, matte finish helps create a more comfortable, friendly environment, while its slip-fighting composition and embossing work to make interiors safer as well. Plus, Loneco Mesa's superior longevity and lower life-cycle cost help to vastly reduce its effect on the environment. Perfect for bringing any space closer to nature.

MEETS FAA REQUIREMENTS:

FAR 25.853(a): 12-Second Vertical Flammability
 FAR 25.793: Factor of Sliding Friction

FEATURES (data shown are nominal):

Roll Width: 6 ft. (1.8 m)
 Roll Length: 60 ft. (18.3 m)
 Overall Thickness: 0.080 in. (2.0 mm)
 Wear Layer Thickness: 0.020 in. (0.5 mm)
 Weight: 0.8 lbs./sq. ft. (3.7 kg/m²)



Part #: EM702
 Color: STORM CLOUD

LONEQUATOR®



AXIS AIRCRAFT COLLECTION: LONEQUATOR®

LONEQUATOR® offers a twist on Lonseal's coin-stamp offerings by featuring a matte surface and smaller patterning for greater subtlety and contemporary elegance.

MEETS FAA REQUIREMENTS:

FAR 25.853(a): 12-Second Vertical Flammability
 FAR 25.793: Factor of Sliding Friction

MEETS FMVSS 302:

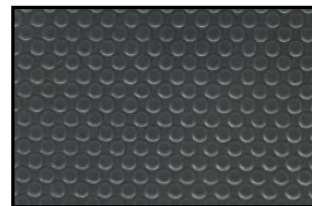
CFR 49 §571.302 Flammability of Interior Materials

EU REACH COMPLIANT FORMULATION:

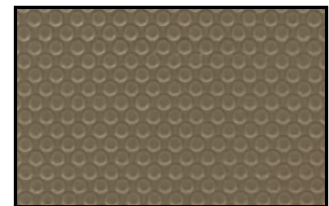
Phthalate free, SVHC free

FEATURES (data shown are nominal):

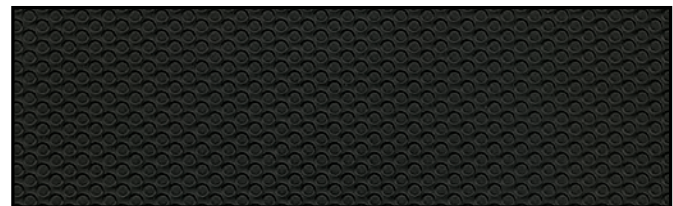
Roll Width: 8 ft. (2.4 m)
 Roll Length: 60 ft. (18.3 m)
 Overall Thickness: 0.092 in. (2.3 mm)
 Wear Layer Thickness: 0.032 in. (0.8 mm)
 Weight: 84 oz./sq. yd. (2848 g/m²)



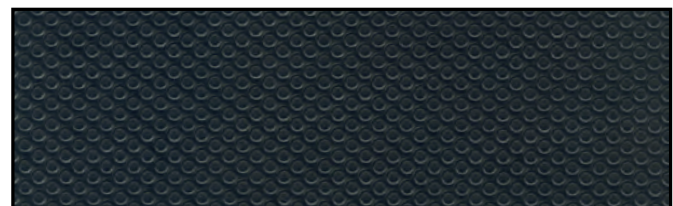
Part #: EQF9914M96
 Color: STORMY SKY



Part #: EQF9922M96
 Color: HILLCREST TAN



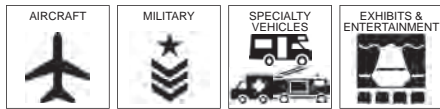
Part #: EQF9983M96
 Color: BLACK STAR



Part #: EQF9995M96
 Color: SANTORINI BLUE

EMBOSSED

LONFORCE®



LONFORCE® maintains the look of Lonplate II with a diamond plate texture with an added rugged construction. Lonforce features embossing that lessens the probability of slippage and provides excellent durability against wear.

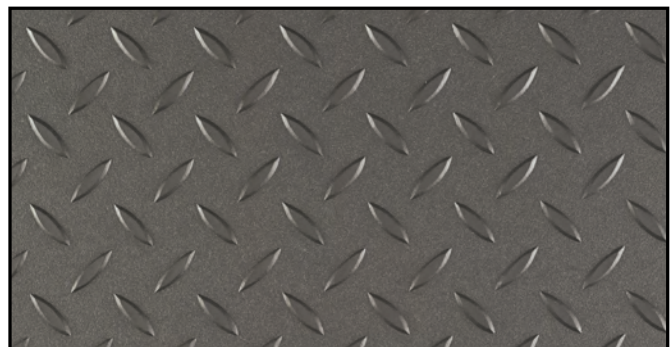
MEETS FAA REQUIREMENTS:
FAR 25.853(a): 12-Second Vertical Flammability

MEETS FMVSS 302:
CFR 49 §571.302 Flammability of Interior Materials

FEATURES *(data shown are nominal)*:
Roll Width: 6 ft. (1.8 m)
Roll Length: 60 ft. (18.3 m)
Overall Thickness: 0.120 in. (3.0 mm)
Weight: 104 oz./sq. yd. (3526 g/m²)

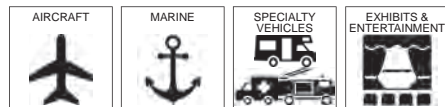


Part #: P400
Color: AIR FORCE BLUE



Part #: P404TX
Color: CARBIDE

LONPEARL®



DURABLE WITH A UNIQUE PEARLESCENT DESIGN

The studded embossing and deeply saturated colors of LONPEARL® offer a stylishly textured surface with excellent camouflaging capabilities. Perfect for high-traffic areas as well as spaces in search of a dynamic statement.

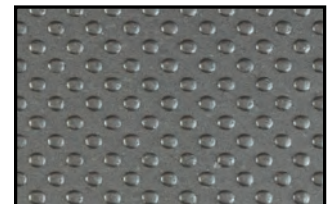
**Due to the light color of #P714 Arctic White, more frequent maintenance procedures are necessary to ensure a long-lasting installation. In addition, areas of prolonged UV exposure should be avoided to prevent unwanted discoloration of the flooring.*

MEETS FMVSS 302:
CFR 49 §571.302 Flammability of Interior Materials

FEATURES *(data shown are nominal)*:
Roll Width: 6 ft. (1.8 m)
Roll Length: 60 ft. (18.3 m)
Overall Thickness: 0.100 in. (2.5 mm)
Wear Layer Thickness: 0.032 in. (0.8 mm)
Weight: 0.9 lbs./sq. ft. (4.2 kg/m²)



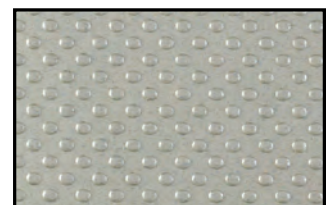
Part #: P712
Color: CASPIAN MIST



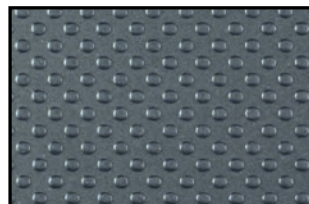
Part #: P713
Color: BALEEN GRAY



Part #: P714
Color: ARCTIC WHITE*



Part #: P716
Color: MARLIN SILVER

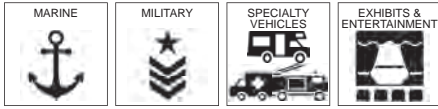


Part #: P717
Color: ORCA BLUE



Part #: P718
Color: ODESSA BLACK

LONPLATE® I



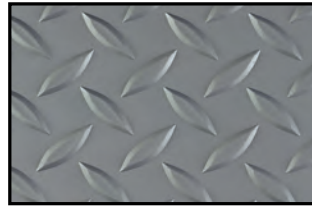
WHAT STARTED IT ALL FOR LONSEAL®

The original LONPLATE® I offer the rugged endurance of classic steel plating. This durable resilient sheet flooring is Lonseal's toughest skid-resistant vinyl, perfect for heavy-duty applications in all kinds of interior spaces.

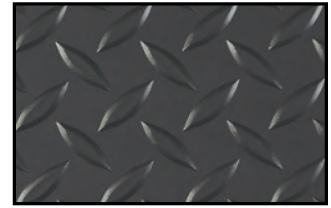
MEETS FMVSS 302:
CFR 49 §571.302 Flammability of Interior Materials

FEATURES (data shown are nominal):

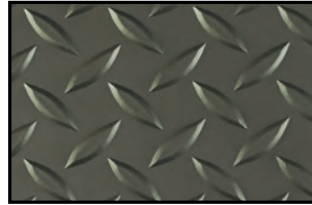
- Roll Width: 6 ft. (1.8 m)
- Roll Length: 60 ft. (18.3 m)
- Overall Thickness: 0.140 in. (3.5 mm)
- Wear Layer Thickness: 0.068 in. (1.7 mm)
- Wear Layer Thickness for P168: 0.040 in. (0.8 mm)
- Weight: 0.8 lbs./sq. ft. (3.7 kg/m²)



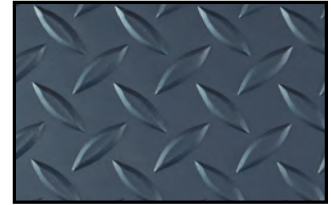
Part #: P161
Color: METALLIC GRAY



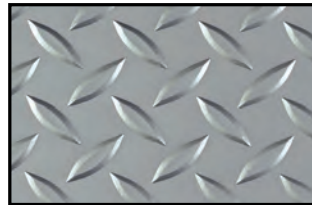
Part #: P163
Color: BLACK



Part #: P164
Color: GUNMETAL



Part #: P165
Color: SAPPHIRE



Part #: P168
Color: TITANIUM



Part #: P176
Color: PEWTER

LONPLATE® II



EXTREME DURABILITY

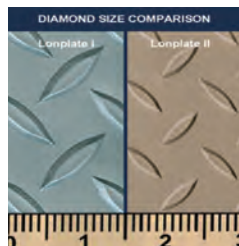
Every bit as tough as the original, but with smaller embossing and wider spacing, LONPLATE® II offers a similar steel-plate pattern that combines the durability of industrial design.

**Please note that Mica, Gunpowder and Midnight are available in both 6 foot (1.83 m) and 8 foot (2.438 m) rolls (8' rolls have a thinner gage of 2.0 mm thickness). All other colors are available in 6 foot (1.83 m) rolls only unless custom ordered.*

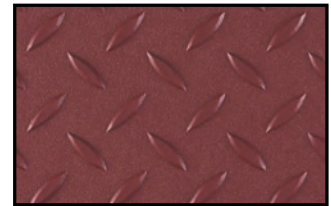
MEETS FMVSS 302:
CFR 49 §571.302 Flammability of Interior Materials

FEATURES (data shown are nominal):

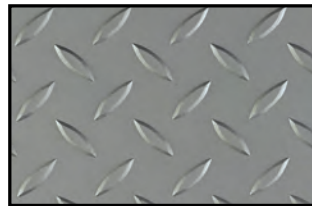
- Roll Width: 6 ft. (1.8 m) or 8 ft. (2.4 m)
- Roll Length: 60 ft. (18.3 m)
- Overall Thickness 6 ft.: 0.120 in. (3.0 mm)
- Overall Thickness 8 ft.: 0.100 in. (2.5 mm)
- Wear Layer Thickness: 0.040 in. (1.0 mm)
- Weight 6ft.: 0.8 lbs./sq. ft. (3.8 kg/m²)
- Weight 8ft.: 0.6 lbs./sq. ft. (2.8 kg/m²)



Part #: P411
Color: PUTTY



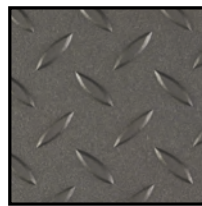
Part #: P419TX
Color: TX BRICK



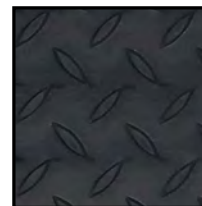
Part #: P421 (6')
Part #: P8421 (8')
Color: MICA*



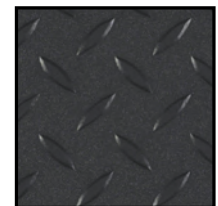
Part #: P424
Color: GUNMETAL



Part #: P424TX (6')
Part #: P8424TX (8')
Color: GUNPOWDER*



Part #: P443 (6')
Color: GUN BLACK



Part #: P443TXM (6')
Part #: P8443TXM (8')
Color: MIDNIGHT*

EMBOSSED

LONPLATE® MAX



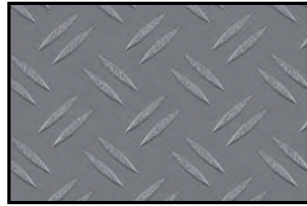
HIGH TRACTION CONTROL

LONPOINT® MAX is a durable commercial-grade sheet vinyl flooring known for its slip resistance and design options. The Lonplate series offers the characteristics of an industrial style into any interior space. It features a wear layer that protects against scratches and stains, making it suitable for high-traffic areas. Lonplate Max is easy to clean and maintain, combined with easy installation.

MEETS FMVSS 302:
CFR 49 §571.302 Flammability of Interior Materials

FEATURES (data shown are nominal):

- Roll Width: 6 ft. (1.8 m)
- Roll Length: 60 ft. (18.3 m)
- Overall Thickness: 0.120 in. (3.0 mm)
- Wear Layer Thickness: 0.40 in. (1.0 mm)
- Weight: 0.8 lbs./sq. ft. (3.8 kg/m²)



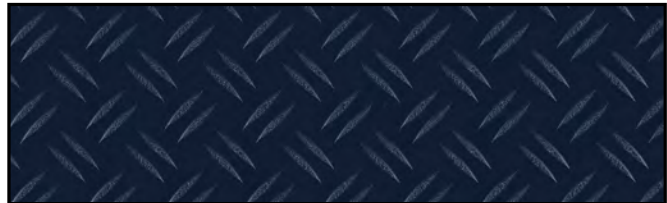
Part #: PX281
Color: SHINING ARMOR



Part #: PX282
Color: BLACK ANVIL



Part #: PX283
Color: DARK SEPIA

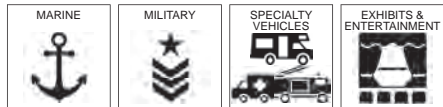


Part #: PX284
Color: DEEP SEA



LONPLATE MAX - DEEP SEA
EMS

LONPLATE® PATINA



INDUSTRIAL ROMANCE

LONPLATE® PATINA is a resilient sheet vinyl surface with high-tech metallic coloring and a classic diamond plate embossing. The exclusive galvanized coloration provides excellent camouflage for scuffing and wear, pairing the aesthetics of iron with the ease of vinyl maintenance. Great for providing a high-tech industrial look.

FEATURES *(data shown are nominal):*

Roll Width: 6 ft. (1.8 m)

Roll Length: 60 ft. (18.3 m)

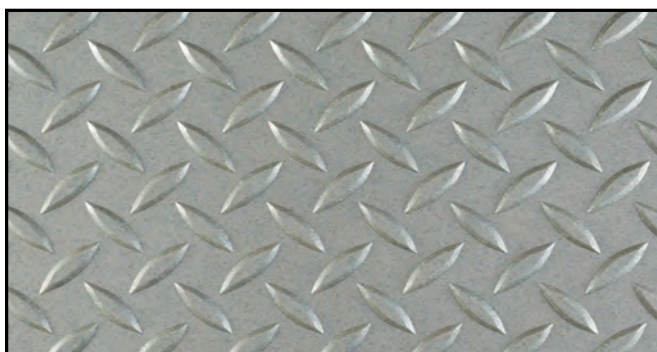
Overall Thickness: 0.140 in. (3.5 mm)

Wear Layer Thickness: 0.032 in. (0.8 mm)

Weight: 0.8 lbs./sq. ft. (4.1 kg/m²)



Part #: P537
Color: PALACE GRAY



Part #: P538
Color: EMPIRE SILVER

LONPLATE® COMPARISON

LONFORCE

LONPLATE II

LONPLATE I

LONPLATE PATINA

LONCOMMODORE



EMBOSSED

LONPOINT® MOONWALK



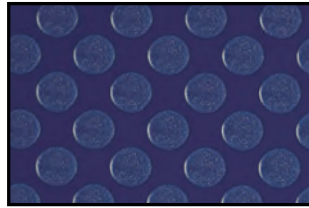
UNIQUE, FASHIONABLE COIN PATTERN

LONPOINT® MOONWALK is similar to our Loncoin series but is distinguished by smaller (half-inch diameter) and more widely-spaced coin stamping. The slip-resistance feature makes it ideal for busy traffic areas, while the intriguing color scheme adds a distinctive designer touch.

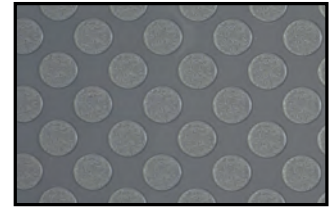
**#P352 Sapphire and #P354 Graphite are iridescent colors, shifting from gray to blue as the angle of the view changes. Please request a sample swatch for color accuracy.*

MEETS FMVSS 302:
CFR 49 §571.302 Flammability of Interior Materials

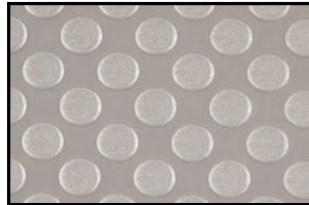
FEATURES (data shown are nominal):
Roll Width: 6 ft. (1.8 m)
Roll Length: 60 ft. (18.3 m)
Overall Thickness: 0.080 in. (2.0 mm)
Wear Layer Thickness: 0.032 in. (0.8 mm)
Weight: 0.7 lbs./sq. ft. (3.3 kg/m²)



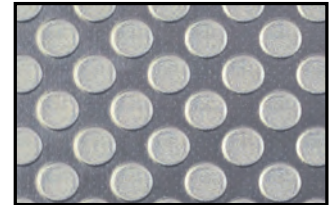
Part #: P345
Color: BLUE



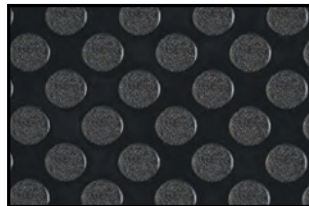
Part #: P348
Color: SLATE



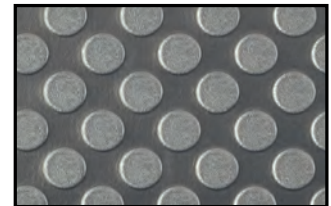
Part #: P351
Color: PLATINUM



Part #: P352
Color: SAPPHIRE*



Part #: P353
Color: BLACK



Part #: P354
Color: GRAPHITE*

LONPOLARIS®



AXIS AIRCRAFT COLLECTION: LONPOLARIS®

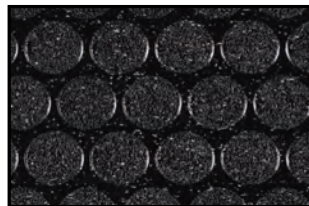
The multi-colored fleck patterns in LONPOLARIS® add a unique sense of style to the coin embossing that also helps mask routine dirt and scuffing.

MEETS FAA REQUIREMENTS:
FAR 25.853(a): 12-Second Vertical Flammability
FAR 25.793: Factor of Sliding Friction

MEETS FMVSS 302:
CFR 49 §571.302 Flammability of Interior Materials

EU REACH COMPLIANT FORMULATION
Phthalate free, SVHC free

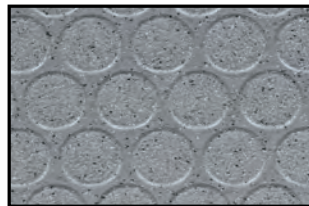
FEATURES (data shown are nominal):
Roll Width: 8 ft. (2.4 m)
Roll Length: 60 ft. (18.3 m)
Overall Thickness: 0.092 in. (2.3 mm)
Wear Layer Thickness: 0.032 in. (0.8 mm)
Weight: 86 oz./sq. yd. (2899 g/m²)



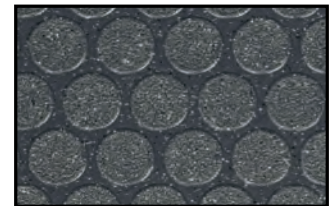
Part #: PLF9150M96
Color: NOIR



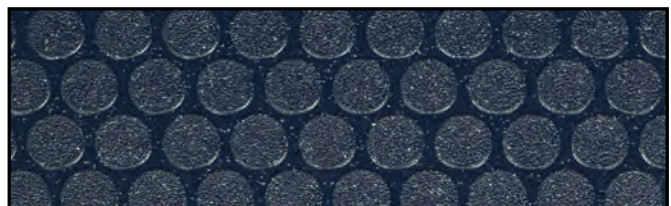
Part #: PLF9154M96
Color: TUSCAN TAN



Part #: PLF9157M96
Color: ROMAN SILVER



Part #: PLF9193M96
Color: RAIN



Part #: PLF9195M96
Color: CAROLINA BLUE

LONRIDGE®



Boasting a unique cross-hatch embossing design, LONRIDGE® has all the slip resistance an interior or semi-exterior surface needs while also providing a neutral color palette with a dusting of speckles that help mask dirt.

Lonridge comes exclusively in 8 ft. widths.

MEETS FMVSS 302:
CFR 49 §571.302 Flammability of Interior Materials

FEATURES *(data shown are nominal):*

Roll Width: 8 ft. (2.4 m)

Roll Length: 60 ft. (18.3 m)

Overall Thickness: 0.100 in. (2.5 mm)

Wear Layer Thickness: 0.032 in. (0.8 mm)

Weight: 0.6 lbs./sq. ft. (2.8 kg/m²)



Part #: DR800
Color: CREME



Part #: DR801
Color: SMOKEY BLACK



Part #: DR802
Color: RUSSET



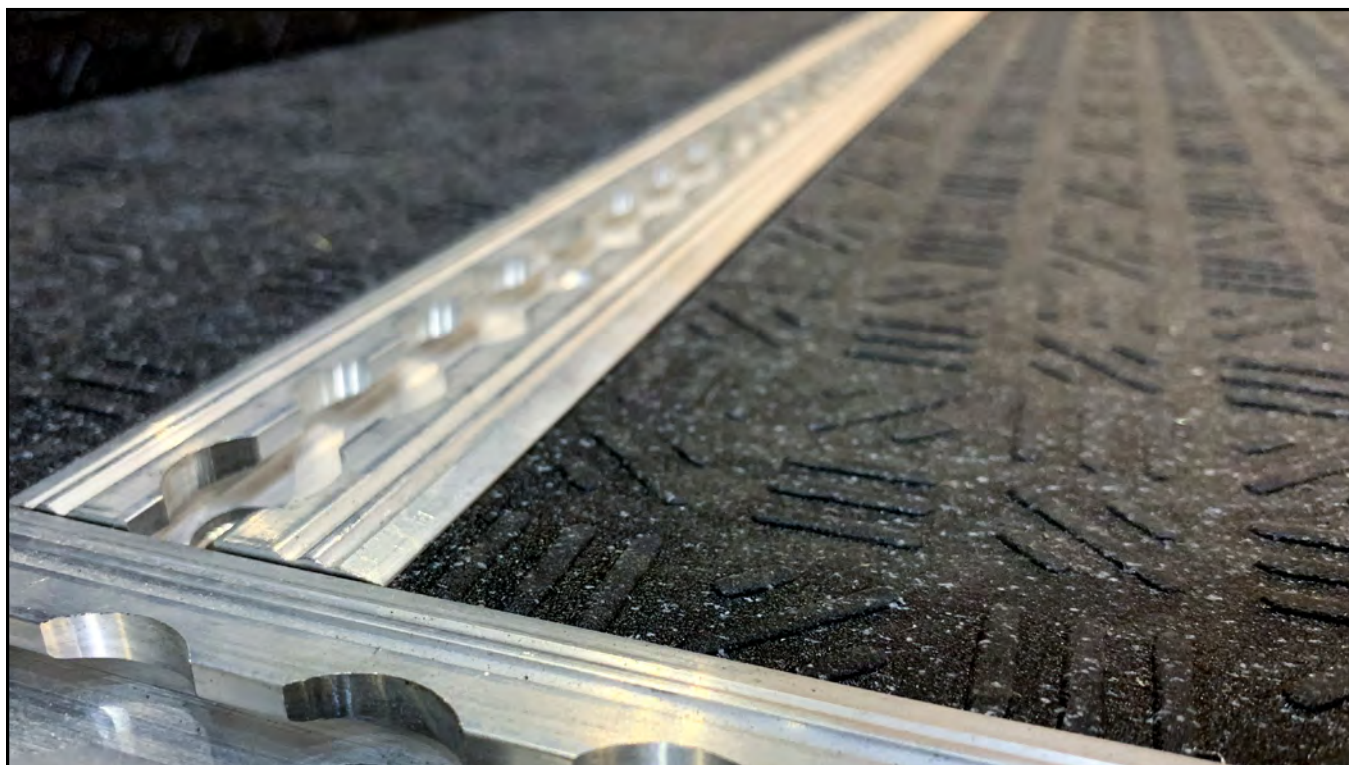
Part #: DR803
Color: MOCCASIN



Part #: DR804
Color: MOONDUST



Part #: DR805
Color: YALE BLUE



LONRIDGE - SMOKEY BLACK
STORYTELLER OVERLAND MODE™ 4X4 ADVENTURE VAN SERIES

SMOOTH

LONCONTRAIL®



CIRRUS AIRCRAFT COLLECTION: LONCONTRAIL®

LONCONTRAIL® resembles a natural striated wood look with thick combed design. The continuous brush stroke soothes an environment that may be otherwise filled with anxiety and stress. It creates order in a demanding space and brings in a sense of harmony and balance.

MEETS FAA REQUIREMENTS:

FAR 25.853(a): 12-Second Vertical Flammability

FAR 25.793: Factor of Sliding Friction

MEETS FMVSS 302:

CFR 49 §571.302 Flammability of Interior Materials

EU REACH COMPLIANT FORMULATION

Phthalate free, SVHC free

FEATURES *(data shown are nominal):*

Roll Width: 6 ft. (1.8 m)

Roll Length: 60 ft. (18.3 m)

Overall Thickness: 0.080 in. (2.0 mm)

Wear Layer Thickness: 0.020 in. (0.5 mm)

Weight: 72 oz./sq. yd. (2441 g/m²)



Part #: CTF9401D72
Color: SPICED WINE



Part #: CTF9402D72
Color: KNIGHT'S ARMOR



Part #: CTF9403D72
Color: HICKORY NUT



Part #: CTF9404D72
Color: CHARCOAL BLUE



LONCONTRAIL - CHARCOAL BLUE
INTERIOR AIRCRAFT CABIN

LONCOURT® I



RESISTS INDENTATION

LONCOURT® I is specifically designed for interior sports facilities where outstanding resilience, durability, and low maintenance are desired. It boasts sound-absorbing construction, simple installation and ease of maintenance, and is excellent for interior gymnasium, multi-purpose fitness room environments, commercial and institutional use. Loncourt I also meets all NCAA requirements for a bounce, can hold up to the impact of retractable bleachers, and accepts painted game lines and graphics.

MEETS NCAA:

Basketball Rebound Requirements (49" - 54")

FEATURES *(data shown are nominal):*

Roll Width: 6 ft. (1.8 m)

Roll Length: 50 ft. (15.2 m)

Overall Thickness: 0.192 in. (4.8 mm)

Wear Layer Thickness for COURT1: 0.031 in. (0.8 mm)

Wear Layer Thickness for CT38: 0.020 in. (0.5 mm)

Weight: 1.6 lbs./sq. ft. (7.6 kg/m²)



Part #: CT38
Color: BUCKWHEAT

LONCOURT® UV



DURABLE, FUNCTIONAL & RESISTS INDENTATION

LONCOURT® UV pairs the durability and aesthetics of the original Loncourt flooring with a factory-applied urethane finish for easier maintenance. This reduces the lifetime cost of the floor by eliminating the need to reapply coats of finish over time.

MEETS NCAA:

Basketball Rebound Requirements (49" - 54")

FEATURES *(data shown are nominal):*

Roll Width: 6 ft. (1.8 m)

Roll Length: 50 ft. (15.2 m)

Overall Thickness: 0.192 in. (4.8 mm)

Wear Layer Thickness: 0.020 in. (0.5 mm)

Weight: 1.6 lbs./sq. ft. (7.9 kg/m²)



Part #: CT838UV
Color: BUCKWHEAT

SMOOTH



LONCOURT UV



LONCOURT I

LONDURA FEATHERWEIGHT



LONDURA FEATHERWEIGHT is slip-resistant safety sheet flooring that offers a smooth multi-polymer matrix featuring wet-traction without using crude, abrasive particles.

MEETS FAA REQUIREMENTS

FAR 25.853(a): 12-Second Vertical Flammability

FAR 25.793: Factor of Sliding Friction

FEATURES *(data shown are nominal):*

Roll Width: 6 ft. (1.8 m)

Roll Length: 60 ft. (18.3 m)

Overall Thickness: 0.080 in. (2.0 mm)

Wear Layer Thickness: 0.040 in. (1.0 mm)

Weight: 94 oz./sq. yd. (3187 g/m²)



Part #: D102FW
Color: AUTUMN MIST



LONDURA FEATHERWEIGHT - AUTUMN MIST
INTERIOR AIRCRAFT CABIN

LONSEAL® SPECIALTY FLOORING



LONSTAGE® UV - SHINY WHITE
NIKE TRADESHOW BOOTH



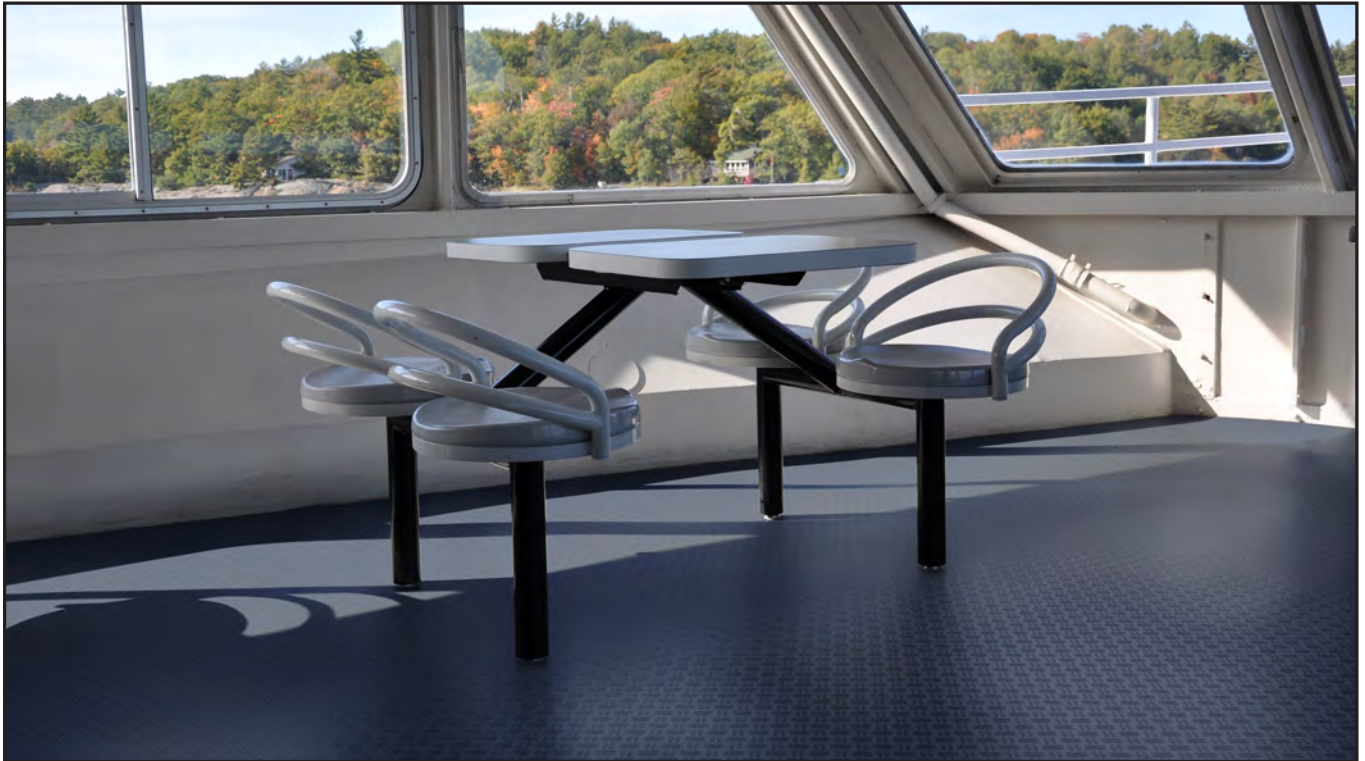
LONWOOD® NATURAL - WHISPER
BOWLUS ROAD CHIEF RV



LONWOOD® NATURAL - PRAIRIE
MOBILE TRAILER TRADESHOW



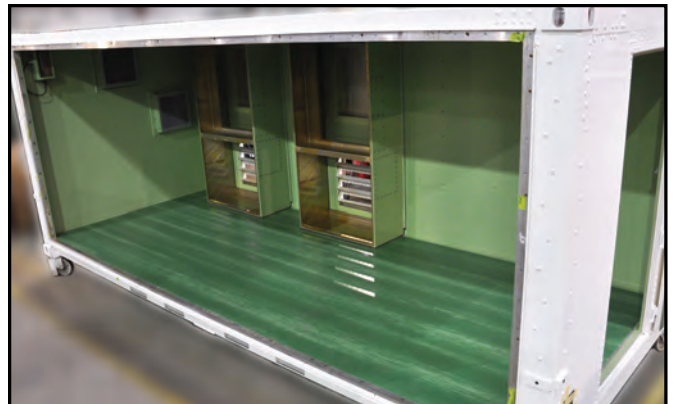
LONPLATE® I - PEWTER
CAR SHOW



LONPLATE® MAX - DEEP SEA FERRY



LONEQUATOR® - STORMY SKY TRADESHOW EXHIBIT



LONMAT® UV - GREEN MARBLE NAVAL MOBILE CONTAINER



LONCOMMODORE® - SHARK SKIN SPORT RUNNER BOAT

SMOOTH

LONECO® LINEN TOPSEAL



GORGEOUS TAILORED CLASSIC LINEN PATTERN and 50% RECYCLED CONTENT.

Utilizing the same formulation of the recycled content of Lonseal's popular Loneco® line, LONECO® LINEN, features a loose woven design that gives a hip, stylish touch to any interior space. An abstracted take on a fabric look, Loneco® Linen suggests the delicacy of cloth while its hue variations and slightly stubbed texture provide a sense of strength and durability. Loneco Linen also features Lonseal's exclusive Topseal formulation, a factory-applied urethane finish that protects the floor and simplifies routine maintenance.

FEATURES (data shown are nominal):

Roll Width: 6 ft. (1.8 m)

Roll Length: 60 ft. (18.3 m)

Overall Thickness: 0.080 in. (2.0 mm)

Wear Layer Thickness: 0.020 in. (0.5 mm)

Weight: 0.6 lbs./sq. ft. (3.1 kg/m²)



Part #: EL330
Color: ECRU



Part #: EL331
Color: OATMEAL



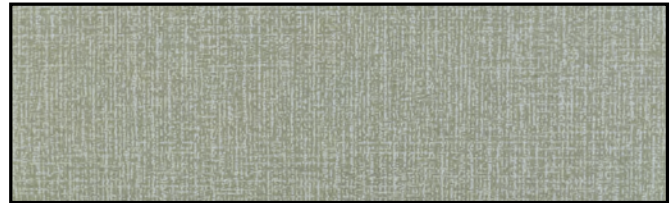
Part #: EL332
Color: HEATHER



Part #: EL333
Color: ASH



Part #: EL334
Color: WHEAT



Part #: EL335
Color: ARTICHOKE



Part #: EL336
Color: PORPOISE



Part #: EL337
Color: COTTON



LONECO LINEN - 332 HEATHER

LONECO® TOPSEAL



CLASSIC SOLID WOOD INGRAINED and RECYCLED CONTENT

As Lonseal's foremost eco-friendly product, LONECO® is composed of recycled content and features Lonseal's exclusive GreenAir® technology that reduces VOC emissions and contributes to superior indoor air quality. Additionally, Loneco's organic and earthy colors easily conceal scuffing and soil. Loneco comes standard with Lonseal's exclusive Topseal formulation, a factory-applied urethane finish that protects the floor, reduces scuffing and simplifies routine maintenance.

FEATURES *(data shown are nominal):*

Roll Width: 6 ft. (1.8 m)

Roll Length: 60 ft. (18.3 m)

Overall Thickness: 0.080 in. (2.0 mm)

Wear Layer Thickness: 0.032 in. (0.8 mm)

Weight: 0.6 lbs./sq. ft. (2.8 kg/m²)



Part #: E7211
Color: ICE CAP



Part #: E7213
Color: MIDNIGHT SKY



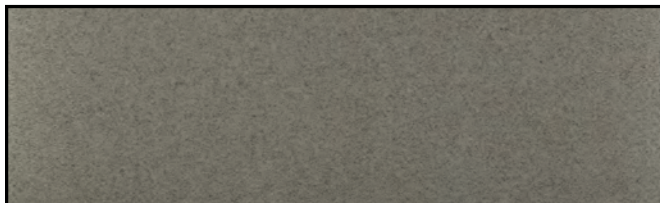
Part #: E7215
Color: SEA COAST



Part #: E7216
Color: MINT



Part #: E7218
Color: COPPER



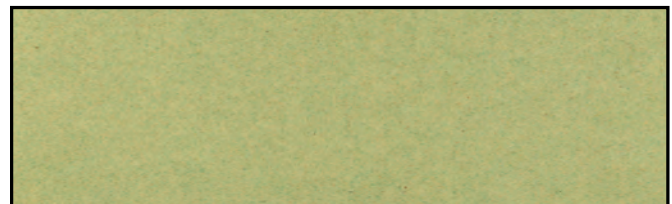
Part #: E7219
Color: MICA



Part #: E7225
Color: CHAMOMILE



Part #: E7230
Color: SACHET



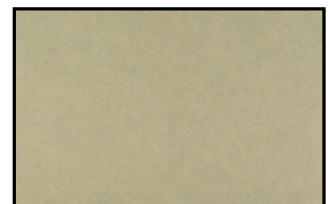
Part #: E7231
Color: DEW DROP



Part #: E7232
Color: BLUEBELL



Part #: E7233
Color: LAVENDER



Part #: E7234
Color: SAND DUNE

SMOOTH

LONFLOOR® GALVANIZED TOPSEAL



INDUSTRIAL PEARLESCENT WITH CLEAN LINES

LONFLOOR® GALVANIZED TOPSEAL lends a striking industrial touch to any specialized installation areas. The subtle color choices offer warmth while the metallic design gives a polished, sophisticated appeal. Lonseal's exclusive Topseal formulation is a factory-applied urethane finish that protects the floor, reduces scuffing and simplifies routine maintenance.

**Due to the light color of #F7240 White Diamond, more frequent maintenance procedures are necessary to ensure a long-lasting installation. In addition, areas of prolonged UV exposure should be avoided to prevent unwanted discoloration of the flooring.*

FEATURES (data shown are nominal):

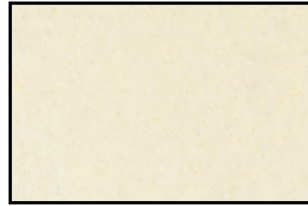
Roll Width: 6 ft. (1.8 m)

Roll Length: 60 ft. (18.3 m)

Overall Thickness: 0.080 in. (2.0 mm)

Wear Layer Thickness: 0.032 in. (0.8 mm)

Weight: 0.6 lbs./sq. ft. (3.0 kg/m²)



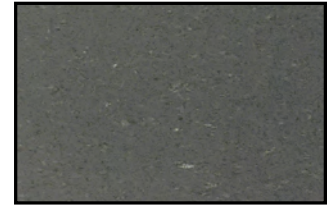
Part #: F7240
Color: WHITE DIAMOND*



Part #: F7241
Color: PLATINUM



Part #: F7243
Color: BLACK PEARL



Part #: F7244
Color: GRAPHITE



Part #: F7247
Color: GRANITE



Part #: F7264
Color: BRASS

LONFLOOR® PLAIN



DURABLE, STRONG and SIMPLE

The simplicity of LONFLOOR® PLAIN's smooth-as-mercury surface and subdued color palette give it infinite application possibilities. Its classic elegance can instantly upgrade the most humble interior or put the finishing touch on any high-end space.

**Due to the light color of #F30 Parchment, additional maintenance procedures are necessary to ensure a long-lasting installation.*

FEATURES (data shown are nominal):

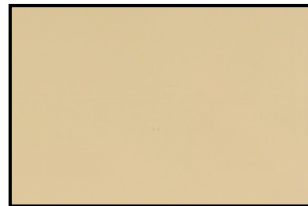
Roll Width: 6 ft. (1.8 m)

Roll Length: 60 ft. (18.3 m)

Overall Thickness: 0.100 in. (2.5 mm)

Wear Layer Thickness: 0.032 in. (0.8 mm)

Weight: 0.7 lbs./sq. ft. (3.6 kg/m²)



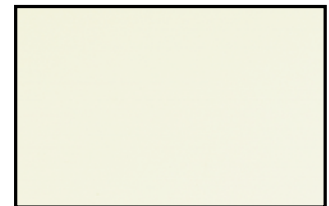
Part #: F04
Color: BUFF



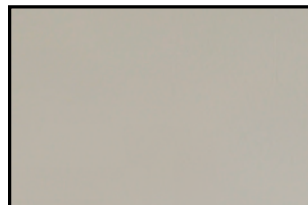
Part #: F09
Color: STONE



Part #: F25
Color: FOG



Part #: F30
Color: PARCHMENT*



Part #: F31
Color: CONCRETE



Part #: F35
Color: NIGHT

LONFLOOR® VISTA



Available in a soft array of gentle shades, the micro-embossing of LONFLOOR® VISTA brings an intriguing dimension to smooth surfaces. Lonfloor Vista's quiet appeal makes it a perfect match with our Loneco® and Lonwood collections.

**Due to the light color of #F641 Snowfall, more frequent maintenance procedures are necessary to ensure a long-lasting installation. In addition, areas of prolonged UV exposure should be avoided to prevent unwanted discoloration of the flooring.*

FEATURES (data shown are nominal):

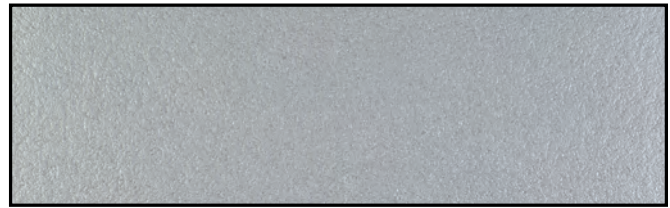
Roll Width: 6 ft. (1.8 m)

Roll Length: 60 ft. (18.3 m)

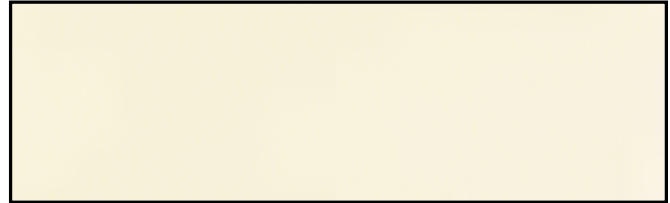
Overall Thickness: 0.080 in. (2.0 mm)

Wear Layer Thickness: 0.034 in. (0.85 mm)

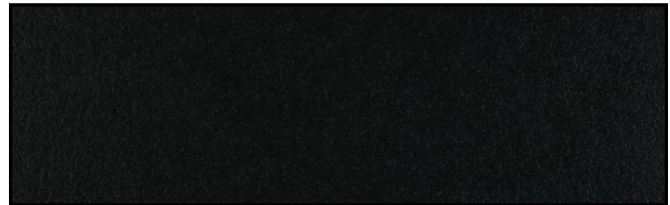
Weight: 0.7 lbs./sq. ft. (3.4 kg/m²)



Part #: F640
Color: TITANIUM



Part #: F641
Color: SNOWFALL*



Part #: F643
Color: MIDNIGHT

LONMARINE® STONE



MED & USCG COMPLIANT

LONMARINE® STONE consists of a lightly dappled palette of neutral and gray tones that makes it a perfect fit for the interior spaces of both pleasure boats and hard-working industrial craft. The elegant marbled pattern helps mask routine scuffing that can occur with heavy foot traffic.

MEETS MED 2014/90/EU Modules B&D
USCG CERTIFIED

MEETS FMVSS 302:

CFR 49 §571.302 Flammability of Interior Materials

EU REACH COMPLIANT FORMULATION

Phthalate free, SVHC free

FEATURES (data shown are nominal):

Roll Width: 6 ft. (1.8 m)

Roll Length: 60 ft. (18.3 m)

Overall Thickness: 0.080 in. (2.0 mm)

Wear Layer Thickness: 0.020 in. (0.5 mm)

Weight: 0.7 lbs./sq. ft. (3.3 kg/m²)



Part #: MS10
Color: DORATO



Part #: MS11
Color: GRIGIO



Part #: MS12
Color: MARE



Part #: MS13
Color: NOCE



Part #: MS14
Color: CARBONE



Part #: MS15
Color: RUSSO



LONMARINE® WOOD - MAPLE & TEAK
MOL FERRY - SUNFLOWER FRANO - GRAND BATH LADIES CHANGING ROOM



LONMARINE® STONE - CARBONE



LONMARINE® STONE - NOCE



LONMARINE® WOOD - TEAK & HOLLY

LONMARINE® WOOD



MED AND USCG COMPLIANT

LONMARINE® WOOD is Lonseal's high-performance, slip-resistant marine safety flooring that has been specifically manufactured to comply with MED specifications for international markets and is USCG approved. Lonseal's marine wood looks have color coordinating trims.

MEETS MED 2014/90/EU Modules B&D
USCG CERTIFIED



MEETS FMVSS 302:
CFR 49 §571.302 Flammability of Interior Materials

EU REACH COMPLIANT FORMULATION
Phthalate free, SVHC free

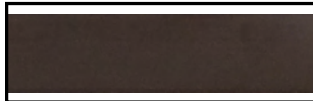
FEATURES (data shown are nominal):
Roll Width: 6 ft. (1.8 m)
Roll Length: 60 ft. (18.3 m)
Overall Thickness: 0.080 in. (2.0 mm)
Wear Layer Thickness: 0.020 in. (0.5 mm)
Weight: 0.7 lbs./sq. ft. (3.4 kg/m²)



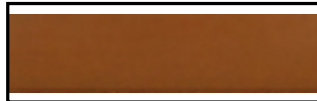
Trim Part #: ZZTRIM05
T-Trim Part#: ZZTRIM15T
Color: TEAK*



Trim Part #: ZZTRIM06
T-Trim Part#: ZZTRIM16T
Color: HOLLY*



Trim Part #: ZZTRIM07
T-Trim Part#: ZZTRIM17T
Color: WALNUT*



Trim Part #: ZZTRIM08
T-Trim Part#: ZZTRIM18T
Color: CHERRY*



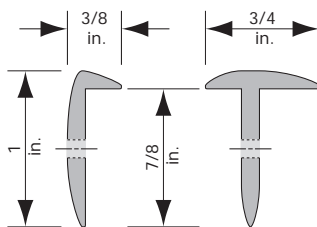
Trim Part #: ZZTRIM09
T-Trim Part#: ZZTRIM19T
Color: CHESTNUT*



Trim Part #: ZZTRIM10
T-Trim Part#: ZZTRIM20T
Color: ANTIQUE*



Trim Part #: ZZTRIM11
T-Trim Part#: ZZTRIM21T
Color: EBONY*



Trim Profiles
Sizes shown are nominal

*Trims are not
MED/USCG Certified



Part #: MW370
Color: TEAK & HOLLY



Part #: MW371
Color: MAPLE & TEAK



Part #: MW373
Color: MAHOGANY & HOLLY



Part #: MW375
Color: TEAK & EBONY



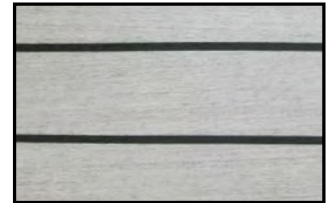
Part #: MW377
Color: WALNUT & HOLLY



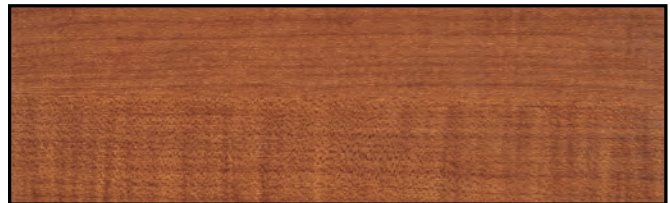
Part #: MW378
Color: TEAK & IVORY



Part #: MW379
Color: ANTIQUE & IVORY



Part #: MW380
Color: WEATHERED TEAK & EBONY



Part #: MW3473
Color: MAHOGANY



Part #: MW3475
Color: SOLID TEAK

SMOOTH

LONMAT® UV & XL



LONMAT® UV features an innovative UV-cured urethane finish that simplifies maintenance; this durable, marbled, fire-retardant, electrically-insulating surface has been the foundation of countless naval vessels' high-voltage areas for decades. Lonmat UV meets the U. S. Military and NATO Switchboard Matting, MIL-DTL-15562G, TYPE I specifications for flooring matting products that insulate workers from electrocution by interrupting the path to ground. Type I Switchboard Matting is often used on ship decking and around electrified equipment where maintenance and operational personal work occurs, and is known for its water-tight integrity with heat-welded seams.

MEETS MIL-DTL-15562G, Type I

FEATURES for LONMAT UV (data shown are nominal):

Roll size 3': 3 ft. (0.9 m) wide x 75' (22.9 m) length
 Roll size 6': 6 ft. (1.8 m) wide x 30' (9.1 m) length
 Overall Thickness: 0.128 in. (3.2 mm)
 Wear Layer Thickness: 0.048 in. (1.2 mm)
 Weight: 1.1 lbs./sq. ft. (5.1 kg/m²)

All colors for Lonmat UV are available in either 3 foot (0.914 m) x 75' (22.86 m) length and 6 foot (1.83 m) width x 30' (9.14 m) length rolls.

LONMAT® XL is a durable, marbled, fire-retardant, electrically-insulating surface that has been the foundation of countless naval vessels' high-voltage areas for decades. Lonmat XL is tested to the requirements of MIL-DTL-15562G, TYPE II for military switchboard matting. It is an electrical-grade matting product that insulates workers from electrocution by interrupting the path to ground. Type II Switchboard Matting is often used on ship decking and around electrified equipment where maintenance and operational personal work occurs.

Lonmat XL is available exclusively in 8' width and only comes in Green Marble.

MEETS MIL-DTL-15562G, Type II

FEATURES for LONMAT UV (data shown are nominal):

Roll Width: 8 ft. (2.4 m)
 Roll Length: 40 ft. (12.2 m)
 Overall Thickness: 0.128 in. (3.2 mm)
 Wear Layer Thickness: 0.064 in. (1.6 mm)
 Weight: 1.0 lbs./sq. ft. (5.0 kg/m²)



Part #: M05 (3 ft.)
 Part #: M05.6 (6 ft.)
 Color: BLUE MARBLE



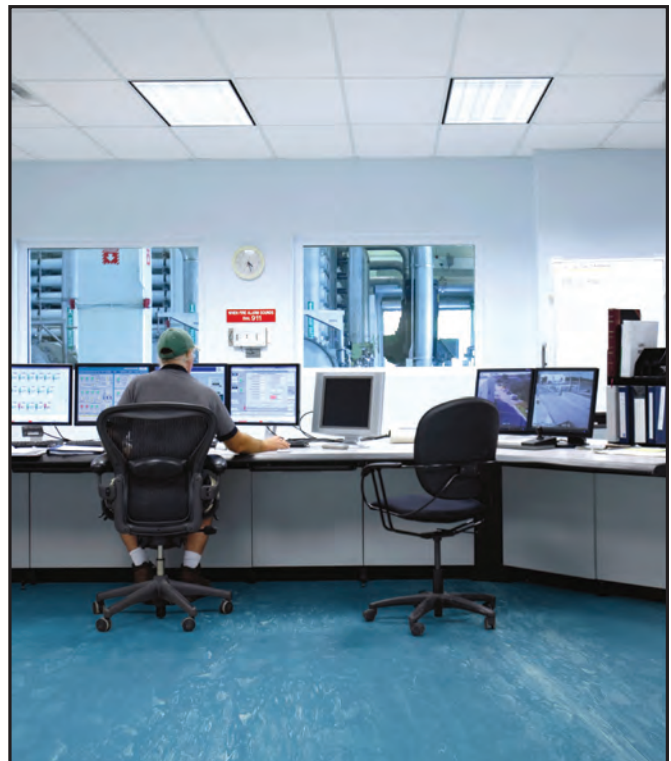
Part #: M07 (3 ft.)
 Part #: M07.6 (6 ft.)
 Color: GRAY MARBLE



Part #: M08 (3 ft.)
 Part #: M08.6 (6 ft.)
 Color: BEIGE MARBLE

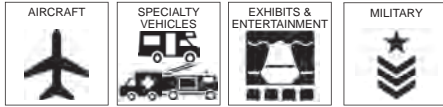


Part #: M09 (3 ft.)
 Part #: M09.6 (6 ft.)
 Part #: M09XL (8 ft.)
 Color: GREEN MARBLE



LONMAT UV - BLUE MARBLE
 COMPUTER ROOM

LONMISTRAL



CIRRUS AIRCRAFT COLLECTION: LONMISTRAL

LONMISTRAL's linear pattern is not only visually extraordinary but also serves to mask dirt and other blemishes. The exotic colors and patterning bring a touch of class and warmth to otherwise cool industrial interiors.

MEETS FAA REQUIREMENTS:

FAR 25.853(a): 12-Second Vertical Flammability
 FAR 25.793: Factor of Sliding Friction

MEETS FMVSS 302:

CFR 49 §571.302 Flammability of Interior Materials

EU REACH COMPLIANT FORMULATION

Phthalate free, SVHC free

FEATURES *(data shown are nominal):*

Roll Width: 6 ft. (1.8 m)

Roll Length: 60 ft. (18.3 m)

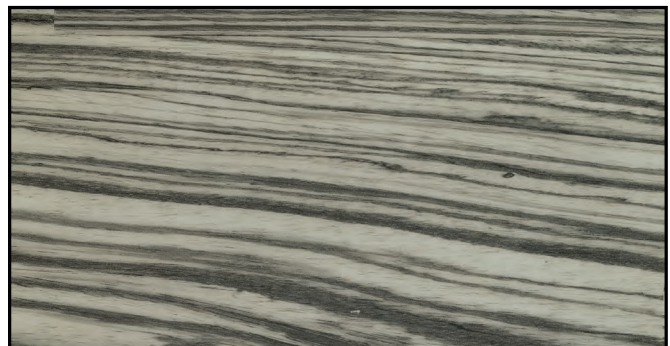
Overall Thickness: 0.080 in. (2.0 mm)

Wear Layer Thickness: 0.020 in. (0.5 mm)

Weight: 72 oz./sq. yd. (2441 g/m²)



Part #: MTF9059D72
 Color: ESPRESSO



Part #: MTF9060D72
 Color: PAYNE'S GRAY



LONMISTRAL - PAYNE'S GRAY
 PRIVATE JET INTERIOR

SMOOTH

LONMOIRE® TOPSEAL



ANTIQUE ELEGANCE IN A MODERN WORLD.

LONMOIRE® TOPSEAL's wood grain pattern has the characteristics of watery waves of lines. This ripple design was once coveted by queens. It distinguishes the centuries-old pattern that now gives everyday commercial spaces a genteel touch. Lonmoire is phthalate free and also features Lonseal's exclusive Topseal formulation. Topseal is Lonseal's factory-applied urethane finish that protects the floor, reduces scuffing and simplifies routine maintenance. Topseal is applied in a 30-micron wear layer and extends the life of the flooring by protecting it from wear due to staining, soiling and scuffing.

PHTHALATE FREE:

REACH Compliant, SVHC free

FEATURES *(data shown are nominal):*

Roll Width: 6 ft. (1.8 m)

Roll Length: 60 ft. (18.3 m)

Overall Thickness: 0.080 in. (2.0 mm)

Wear Layer Thickness: 0.020 in. (0.5 mm)

Weight: 0.7 lbs./sq. ft. (3.3 kg/m²)



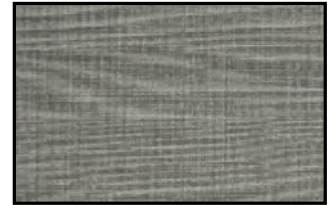
Part #: M51
Color: BLANC



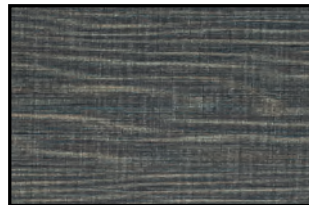
Part #: M52
Color: VERGE D'OR



Part #: M53
Color: D'OR



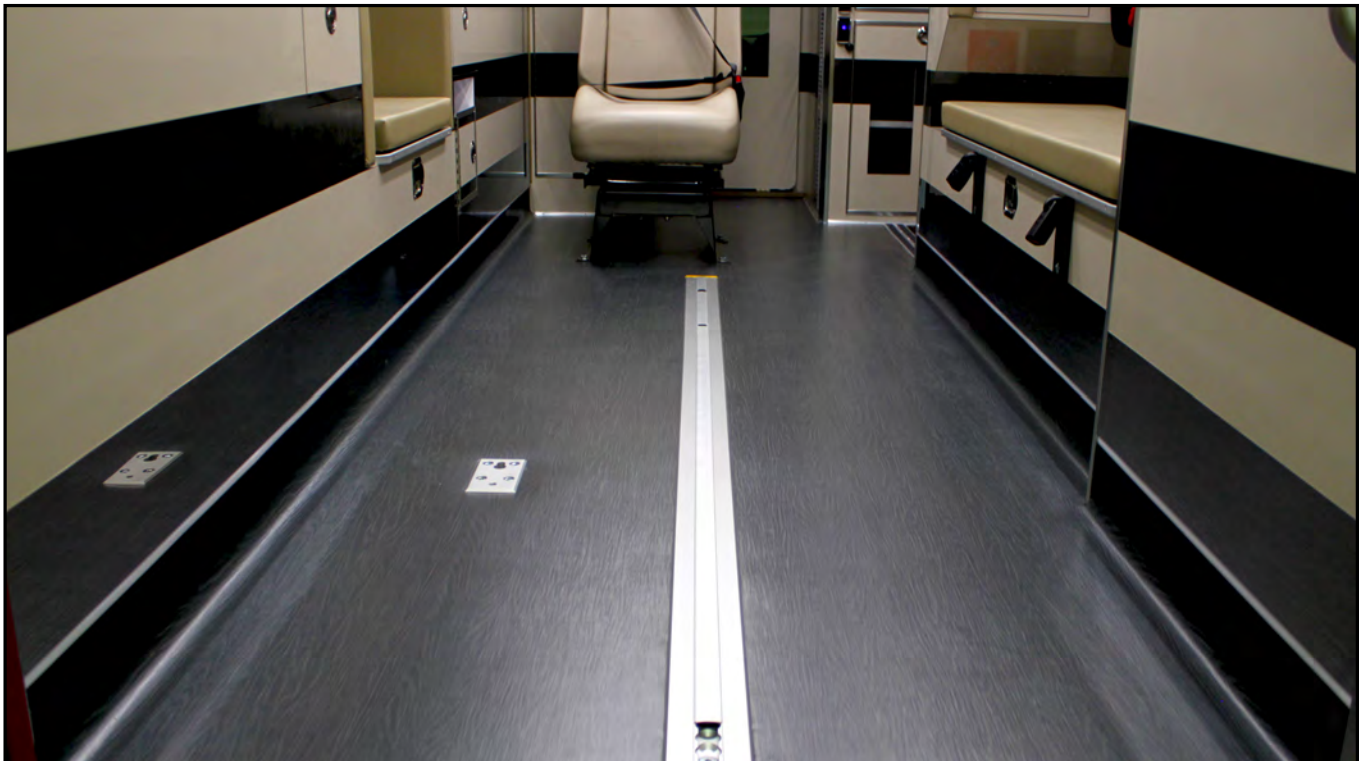
Part #: M54
Color: GRIS



Part #: M55
Color: NOIR

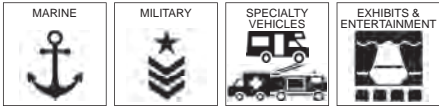


Part #: M56
Color: BRUN



LONMOIRE - GRIS
EMS VEHICLE

LONSAND®

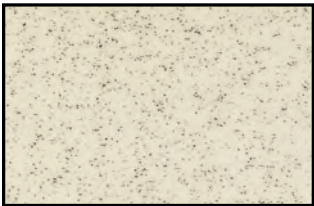


Utilizing the same color scheme as Lonridge but without the embossing, LONSAND® provides a subtler form of slip resistance through a texture that recalls fine sandpaper. Perfect for all interior or semi-exterior applications such as marine and specialty vehicles.

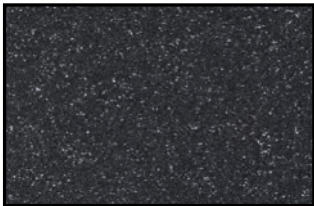
Lonsand comes exclusively in 8 ft. widths.

MEETS FMVSS 302:
CFR 49 §571.302 Flammability of Interior Materials

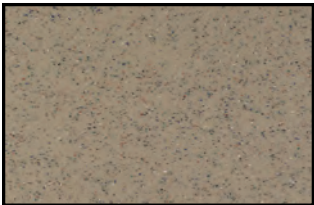
FEATURES (data shown are nominal):
Roll Width: 8 ft. (2.4 m)
Roll Length: 60 ft. (18.3 m)
Overall Thickness: 0.080 in. (2.0 mm)
Wear Layer Thickness: 0.032 in. (0.8 mm)
Weight: 0.6 lbs./sq. ft. (2.9 kg/m²)



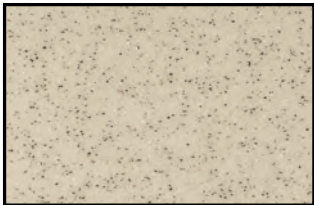
Part #: DS830
Color: CREME



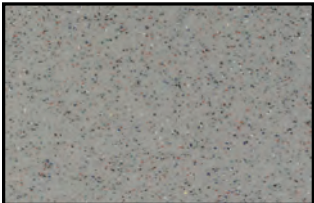
Part #: DS831
Color: SMOKEY BLACK



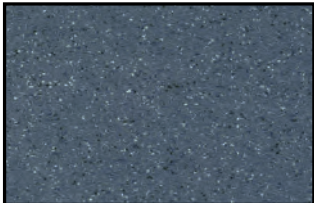
Part #: DS832
Color: RUSSET



Part #: DS833
Color: MOCCASIN



Part #: DS834
Color: MOONDUST



Part #: DS835
Color: YALE BLUE



LONSAND - MOONDUST
EMS VEHICLE



SMOOTH

LONSOLSTICE



HALO AIRCRAFT COLLECTION: LONSOLSTICE

As Lonseal's foremost eco-friendly product, Lonsolstice's subtle design suggests a dense cork look and incorporates small flecks of coloring to provide depth and grit.

MEETS FAA REQUIREMENTS:

FAR 25.853(a): 12-Second Vertical Flammability

MEETS FMVSS 302:

CFR 49 §571.302 Flammability of Interior Materials

EU REACH COMPLIANT FORMULATION

Phthalate free, SVHC free

FEATURES (data shown are nominal):

Roll Width: 6 ft. (1.8 m)

Roll Length: 60 ft. (18.3 m)

Overall Thickness: 0.080 in. (2.0 mm)

Wear Layer Thickness: 0.032 in. (0.8 mm)

Weight: 74 oz./sq. yd. (2509 g/m²)



Part #: SLF9215D72
Color: SAGE



Part #: SLF9219D72
Color: GREIGE



Part #: SLF9233D72
Color: GRIDELIN



Part #: SLF9235D72
Color: KHAKI



LONSOLSTICE - GRIDELIN
AIRCRAFT LABORATORY/BATHROOM



LONSOLSTICE - GREIGE
AIRCRAFT INTERIORS EXPO VIP LOUNGE

LONSPECK® TOPSEAL



HIGH PERFORMANCE WITH TIMELESS DESIGN

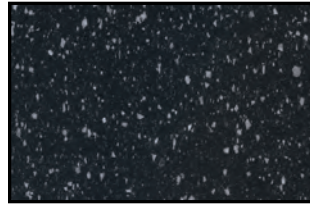
The speckled surface of LONSPECK® TOPSEAL easily hides grit and scuffing, while the sanitary seaming contributes to a hygienic environment. The nine therapeutic colors available make Lonspeck an exceptionally flexible option in showrooms, boats, EMS, and other specialty vehicles. Topseal formulation is a factory-applied urethane finish that protects the floor, reduces scuffing and simplifies routine maintenance.

MEETS FMVSS 302:
CFR 49 §571.302 Flammability of Interior Materials

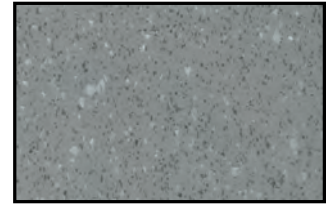
FEATURES *(data shown are nominal):*
 Roll Width: 6 ft. (1.8 m)
 Roll Length: 60 ft. (18.3 m)
 Overall Thickness: 0.080 in. (2.0 mm)
 Wear Layer Thickness: 0.032 in. (0.8 mm)
 Weight: 0.6 lbs./sq. ft. (3.1 kg/m²)



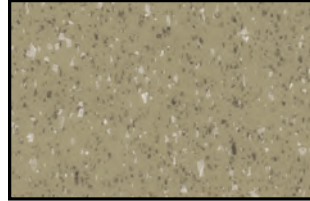
LONSPECK TOPSEAL - TWILIGHT ZONE



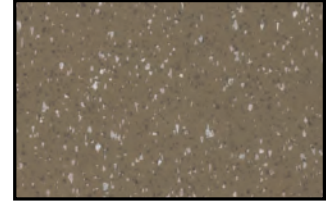
Part #: SX111
Color: TWILIGHT ZONE



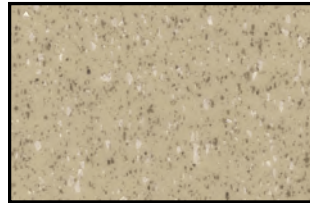
Part #: SX112
Color: MAGNETIC GRAY



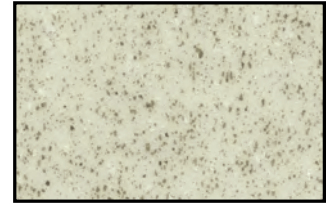
Part #: SX113
Color: ROCKY BEACH



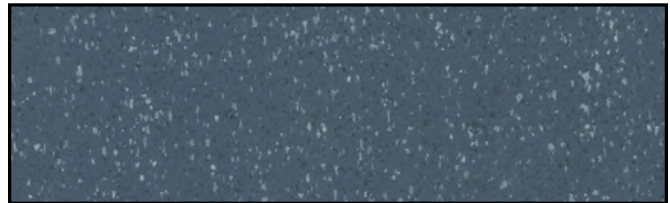
Part #: SX114
Color: TAMARIND



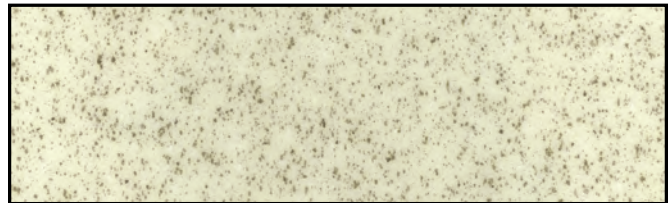
Part #: SX115
Color: SANDSTORM



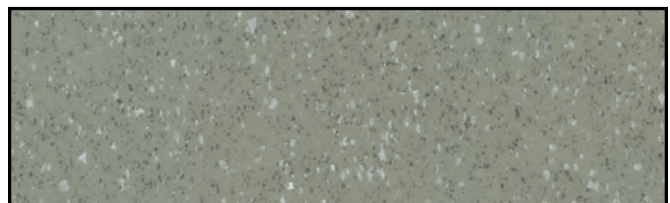
Part #: SX116
Color: WHITE PEPPER



Part #: SX117
Color: HALE NAVY



Part #: SX118
Color: VANILLA BEAN



Part #: SX119
Color: PIGEON GRAY

SMOOTH

LONSTAGE® MT



LONSTAGE® MT is a non-glare surface that is ideal for stages and dance floors. It is also suitable for showrooms and “showplace” spaces. Recommended for interior use only, and should not be used where subject to extreme mechanical use.

FEATURES (data shown are nominal):

Roll Width: 6 ft. (1.8 m)

Roll Length: 60 ft. (18.3 m)

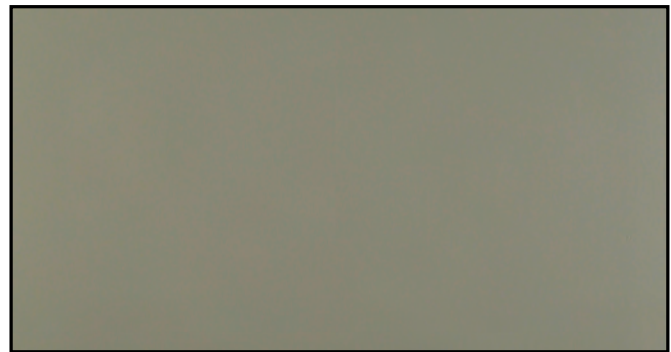
Overall Thickness: 0.080 in. (2.0 mm)

Wear Layer Thickness: 0.014 in. (0.35 mm)

Weight: 0.6 lbs./sq. ft. (3.1 kg/m²)



Part #: S101
Color: BLACK



Part #: S103
Color: GRAY

LONSTAGE® UV



STRIKING and BOLD

LONSTAGE® UV has the same bold and slick look as our Lonmetro but a smoother surface. Its ultra-clean style means that Lonstage UV is suitable for showrooms and “showplace” spaces, such as dance and entertainment studios.

**Due to the light color of #S100 Shiny White, more frequent maintenance procedures are necessary to ensure a long-lasting installation. In addition, areas of prolonged UV exposure should be avoided to prevent unwanted discoloration of the flooring.*

FEATURES (data shown are nominal):

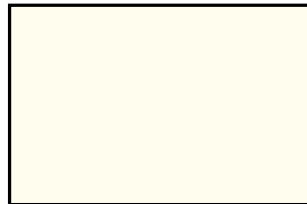
Roll Width: 6 ft. (1.8 m)

Roll Length: 60 ft. (18.3 m)

Overall Thickness: 0.080 in. (2.0 mm)

Wear Layer Thickness: 0.018 in. (0.45 mm)

Weight: 0.7 lbs./sq. ft. (3.4 kg/m²)



Part #: S100
Color: SHINY WHITE*



Part #: S102
Color: SHINY BLACK



Part #: S104
Color: SHINY BLUE



Part #: S105
Color: SHINY RED

LONSTRAND TOPSEAL



LONSTRAND TOPSEAL was designed to contribute to restorative responses such as reducing stress, improving cognitive function and creativity, improving well-being and healing. The design mimics a bark of a tree, which gives a harmonious relationship with the earth and offers a sense of healing and tranquility. The long, fibrous-like strands can visually expand a space. Lonstrand has multiple design purposes. It is subtle enough to provide a smooth transition between rooms and interesting enough to help emphasize a focal point. Topseal is a factory-applied urethane finish that protects the floor, reduces scuffing and simplifies routine maintenance. Topseal is applied in a 30-micron wear layer and extends the life of the flooring.

PHTHALATE FREE:
REACH Compliant, SVHC free

FEATURES *(data shown are nominal)*:
Roll Width: 6 ft. (1.8 m)
Roll Length: 60 ft. (18.3 m)
Overall Thickness: 0.080 in. (2.0 mm)
Wear Layer Thickness: 0.020 in. (0.5 mm)
Weight: 0.7 lbs./sq. ft. (3.2 kg/m²)



LONSTRAND TOPSEAL - COLOMBIAN ROAST



Part #: SD251
Color: TOASTED BAGEL



Part #: SD252
Color: SPANISH CHESTNUT



Part #: SD253
Color: COLOMBIAN ROAST



Part #: SD254
Color: OILED TEAK



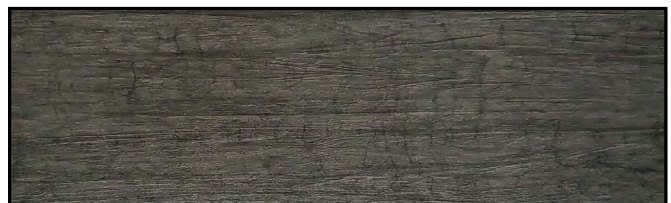
Part #: SD255
Color: OLIVE BRANCH



Part #: SD256
Color: WINTER TRAIL



Part #: SD257
Color: GRAY WOLF



Part #: SD258
Color: BLACK LAVA

SMOOTH

LONSTRATUS®



MIRAGE AIRCRAFT COLLECTION: LONSTRATUS®

LONSTRATUS® features a loose weave design that gives a hip, stylish touch to any aircraft space. Lonstratus dances between visual texture and the tactile quality of linen fabric. It provides a tranquil aircraft cabin environment, while brings a sophistication to the floor.

MEETS FAA REQUIREMENTS:

FAR 25.853(a): 12-Second Vertical Flammability

FAR 25.793: Factor of Sliding Friction

MEETS FMVSS 302:

CFR 49 §571.302 Flammability of Interior Materials

EU REACH COMPLIANT FORMULATION

Phthalate free, SVHC free

FEATURES (data shown are nominal):

Roll Width: 6 ft. (1.8 m)

Roll Length: 60 ft. (18.3 m)

Overall Thickness: 0.080 in. (2.0 mm)

Wear Layer Thickness: 0.020 in. (0.5 mm)

Weight: 72 oz./sq. yd (2441 g/m²)



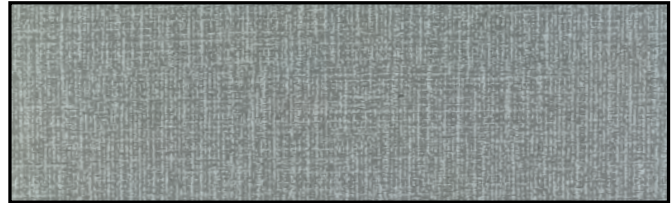
Part #: STF9330D72
Color: ALMOND



Part #: STF9331D72
Color: TAWNY



Part #: STF9332D72
Color: TIMBERWOLF



Part #: STF9336D72
Color: CESIOUS

LONVIRGA®



CIRRUS AIRCRAFT COLLECTION: LONVIRGA®

LONVIRGA® is an astonishingly realistic wood grain look that adds an intriguing design touch to aircraft interior spaces, particularly lavatories and private cabins.

MEETS FAA REQUIREMENTS:

FAR 25.853(a): 12-Second Vertical Flammability

FAR 25.793: Factor of Sliding Friction

MEETS FMVSS 302:

CFR 49 §571.302 Flammability of Interior Materials

EU REACH COMPLIANT FORMULATION

Phthalate free, SVHC free

FEATURES (data shown are nominal):

Roll Width: 6 ft. (1.8 m)

Roll Length: 60 ft. (18.3 m)

Overall Thickness: 0.080 in. (2.0 mm)

Wear Layer Thickness: 0.020 in. (0.5 mm)

Weight: 72 oz./sq. yd. (2441 g/m²)



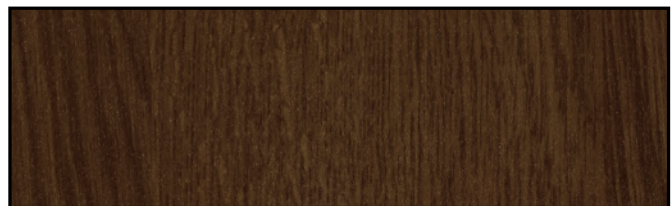
Part #: VGF9081D72
Color: CINNAMON



Part #: VGF9087D72
Color: CAVIAR



Part #: VGF9089D72
Color: CUMIN



Part #: VGF9097D72
Color: CHESTNUT

LONWOOD® DAKOTA TOPSEAL



OAK, QUARTER SAWN TIMBER CLASSIC

LONWOOD® DAKOTA is a slightly textured sheet that evokes the open grain of oak and the nuance of a knot-free, quarter-sawn plank. Lonwood Dakota now comes standard with Lonseal's exclusive Topseal formulation, a factory-applied urethane finish that protects the floor, reduces scuffing and simplifies routine maintenance.

This product contains partial "boards" at both edges. This selvage should be removed to assure an aesthetically pleasing transition from sheet to sheet. The selvage width can vary depending on the lot.

FEATURES (data shown are nominal):

- Roll Width: 6 ft. (1.8 m)
- Roll Length: 60 ft. (18.3 m)
- Overall Thickness: 0.080 in. (2.0 mm)
- Wear Layer Thickness: 0.020 in. (0.5 mm)
- Weight: 0.6 lbs./sq. ft. (3.1 kg/m²)

*NOTE: Longer lead time may apply on these colors. Please speak with a Lonseal Sales Representative for more information



Part #: W7077
Color: NATURAL OAK*



Part #: W7078
Color: AMBER*



Part #: W7079
Color: CHERRY



Part #: W7082
Color: GOLDEN OAK



Part #: W7083
Color: PLATINUM MIST



Part #: W7087
Color: EBONY



Part #: W7088
Color: PARLOR OAK*



Part #: W7089
Color: WARM TEA*



Part #: W7093
Color: MARSHMALLOW*



Part #: W7095
Color: HONEY CAKES



Part #: W7096
Color: PUMPKIN PIE*



Part #: W7097
Color: HOT CHOCOLATE

SMOOTH

LONWOOD® MADERA TOPSEAL



MODERN WIDE PLANK

A wide-plank design in six lustrous colors, LONWOOD® MADERA is a resilient sheet vinyl that features detailed graining that elegantly weaves around beautifully-rendered knotting. This extraordinarily realistic look is further enhanced by articulated plank lines resulting in a design that suggests the strength of old-world craftsmanship paired with the crisp, clean lines of contemporary living. Madera's plank lengths are 32" and 16," with a plank width of 4.75"±. Lonwood Madera comes standard with Lonseal's exclusive Topseal formulation, a factory-applied urethane finish that protects the floor, reduces scuffing and simplifies routine maintenance.

FEATURES (data shown are nominal):

- Roll Width: 6 ft. (1.8 m)
- Roll Length: 60 ft. (18.3 m)
- Overall Thickness: 0.080 in. (2.0 mm)
- Wear Layer Thickness: 0.020 in. (0.5 mm)
- Weight: 0.6 lbs./sq. ft. (3.1 kg/m²)



Part #: W130
Color: SHORTBREAD



Part #: W131
Color: PORTOBELLO



Part #: W132
Color: OREGANO



Part #: W133
Color: CARAMEL



Part #: W134
Color: BRANDY



Part #: W135
Color: COCOA



Part #: W136
Color: EARL GRAY

LONWOOD® MARINE



LONWOOD® MARINE is Lonseal's high-performance, slip-resistant marine flooring in teak and holly. Intended for interior spaces, Lonwood Marine comes in both a glossy surface option or with Lonseal's factory-applied urethane finish, Topseal. Both have color coordinating trim.

For similar marine-grade products that are MED and USCG certified and to see color coordinating trim, please see our LONMARINE® WOOD offerings on page 26.

FEATURES (data shown are nominal):

- Roll Width: 6 ft. (1.8 m)
- Roll Length: 60 ft. (18.3 m)
- Overall Thickness: 0.080 in. (2.0 mm)
- Wear Layer Thickness: 0.020 in. (0.5 mm)
- Weight: 0.6 lbs./sq. ft. (3.1 kg/m²)



Part #: W72G
Color: TEAK & HOLLY GLOSS



Part #: W74TS
Color: TEAK & HOLLY TOPSEAL

LONWOOD® NATURAL TOPSEAL



SUBTLE, GENTLE PATTERN REPEAT and UNIQUE COLORS

LONWOOD® NATURAL pairs the timeless aesthetics of wood with the benefits of high-performance sheet vinyl in colors that range from earthy to quirky. Its soft grain patterning and smooth surface make Lonwood Natural ideal for those who want the warmth of wood with easier maintenance. Lonwood Natural now comes standard with Lonseal's exclusive Topseal formulation, a factory-applied urethane finish that protects the floor, reduces scuffing and simplifies routine maintenance.

FEATURES (*data shown are nominal*):

Roll Width: 6 ft. (1.8 m)

Roll Length: 60 ft. (18.3 m)

Overall Thickness: 0.080 in. (2.0 mm)

Wear Layer Thickness: 0.020 in. (0.5 mm)

Weight: 0.6 lbs./sq. ft. (3.1 kg/m²)



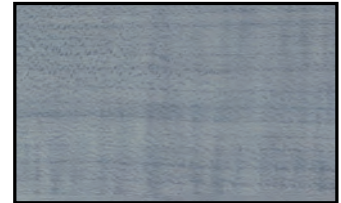
Part #: W7452
Color: MAPLE SYRUP



Part #: W7453
Color: PRAIRIE



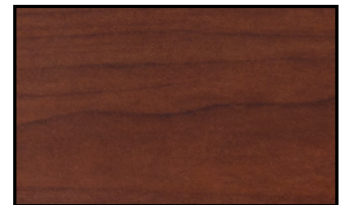
Part #: W7455
Color: NUTSHELL



Part #: W7456
Color: QUAIL EGGS



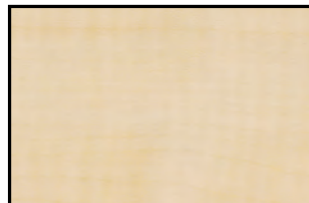
Part #: W7457
Color: BUCKWHEAT



Part #: W7458
Color: BRIAR ROOT



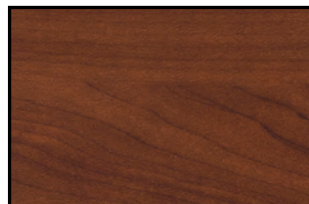
Part #: W7459
Color: BARK DUST



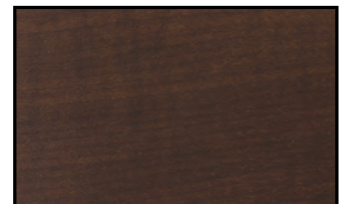
Part #: W7461
Color: WHISPER



Part #: W7462
Color: GENTLE WIND



Part #: W7463
Color: THUNDERSTORM



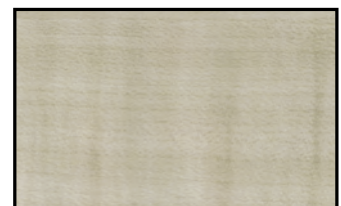
Part #: W7464
Color: SUMMER NIGHT



Part #: W7465
Color: RAINFALL



Part #: W7466
Color: BABBLING CREEK



Part #: W7467
Color: SINGING BIRDS

SMOOTH

LONWOOD® PERFORMA



ENDURANCE, MULTI-PURPOSE FITNESS FLOORING

LONWOOD® PERFORMA features an anti-fatigue, cushioned-step, closed-cell foam-backing that is designed specifically for high-traffic and high-impact activities. A wood-grain sheet, it is ergonomically designed, sound-absorbing and helps prevent injuries.

MEETS NCAA:

Basketball Rebound Requirements (49" - 54")

FEATURES *(data shown are nominal)*:

Roll Width: 6 ft. (1.8 m)

Roll Length: 60 ft. (18.3 m)

Overall Thickness: 0.220 in. (5.5 mm)

Wear Layer Thickness: 0.020 in. (0.5 mm)

Weight: 1.3 lbs./sq. ft. (6.2 kg/m²)



Part #: W547
Color: SABLE



Part #: W549
Color: SILVER LAKE



Part #: W550
Color: BUCKWHEAT



Part #: W553
Color: MOCHA LATTE



Part #: W556
Color: SUMMER BREEZE



Part #: W557
Color: MORNING FOG



Part #: W558
Color: HONEY VANILLA



Part #: W559
Color: GOLDEN OAK

LONWOOD® WITH FOAM



Ideal for fitness and gymnasium facilities, LONWOOD® WITH FOAM features an anti-fatigue, cushioned-step, closed-cell foam-backing well-suited to high-traffic interiors.

MEETS NCAA:

Basketball Rebound Requirements (49" - 54")

FEATURES *(data shown are nominal)*:

Roll Width: 6 ft. (1.8 m)

Roll Length: 60 ft. (18.3 m)

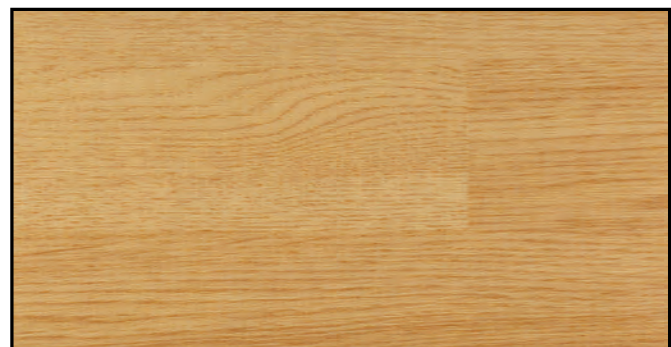
Overall Thickness: 0.120 in. (3.0 mm)

Wear Layer Thickness: 0.020 in. (0.5 mm)

Weight: 0.7 lbs./sq. ft. (3.6 kg/m²)



Part #: W375
Color: FOAM BUCKWHEAT



Part #: W382
Color: FOAM GOLDEN OAK

LONZEBRA TOPSEAL



STUNNING, EXOTIC, & UNIQUE

LONZEBRA TOPSEAL's striated linear pattern is not only visually extraordinary but also serves to mask dirt and other blemishes. The exotic colors and patterning are striking on their own but also have exciting pairing potential with Lonseal's Loneco®, Lonwood Natural and Lonwood Dakota products. The Lonzebra comes standard with Lonseal's exclusive Topseal formulation, a factory-applied urethane finish that protects the floor, reduces scuffing and simplifies routine maintenance.

FEATURES (*data shown are nominal*):

Roll Width: 6 ft. (1.8 m)

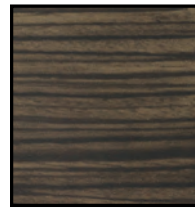
Roll Length: 60 ft. (18.3 m)

Overall Thickness: 0.080 in. (2.0 mm)

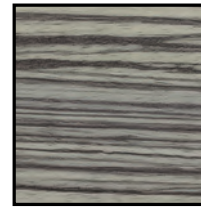
Wear Layer Thickness: 0.020 in. (0.5 mm)

Weight: 0.6 lbs./sq. ft. (3.0 kg/m²)

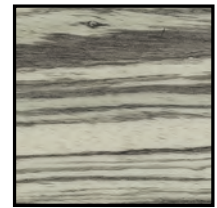
NOTE: Longer lead time may apply on all colors (except for LZ7066 Bark). Please speak with a Lonseal Sales Representative for more information



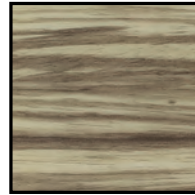
Part #: LZ7059
Color: FALCON



Part #: LZ7060
Color: TWILIGHT



Part #: LZ7061
Color: RAVEN



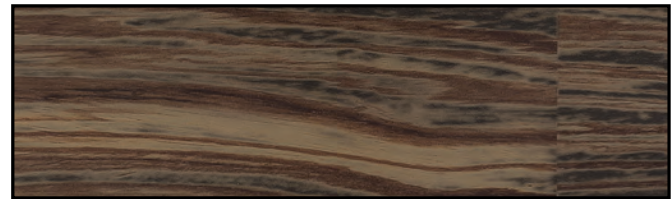
Part #: LZ7063
Color: SAVANNA



Part #: LZ7066
Color: BARK



Part #: LZ7068
Color: AFRICAN SUNSET



Part #: LZ7069
Color: SIENNA PLAINS

LONWOVEN TOPSEAL



LONWOVEN design offers a timeless and elegant aesthetic that combines the natural texture of linen with the durability and convenience of sheet vinyl. This flooring option features a meticulously crafted pattern that replicates the look and feel of woven linen fabric, adding a touch of sophistication to any space. The subtle variations in color and texture give the flooring depth and visual interest, creating a visually captivating and inviting atmosphere. It also features Lonseal's exclusive Topseal formulation, which is a factory-applied urethane finish that protects the floor, reduces scuffing and simplifies routine maintenance. Topseal wear layer also extends the life of the flooring

FEATURES (*data shown are nominal*):

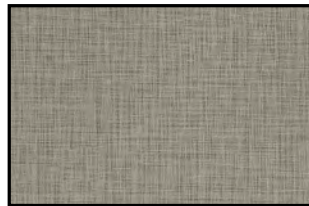
Roll Width: 6 ft. (1.8 m)

Roll Length: 60 ft. (18.3 m)

Overall Thickness: 0.080 in. (2.0 mm)

Wear Layer Thickness: 0.020 in. (0.5 mm)

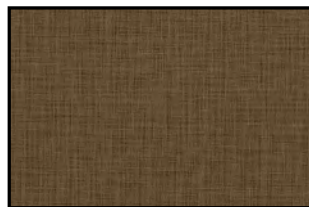
Weight: 0.6 lbs./sq. ft. (3.1 kg/m²)



Part #: WN611
Color: GRAY SUIT



Part #: WN612
Color: COOKIE DOUGH



Part #: WN613
Color: FRIAR'S BROWN



Part #: WN614
Color: SKY HIGH











Part #: WN615
Color: SAND DOLLAR



Part #: WN616
Color: WARM MIL

PRODUCT CHART (SUGGESTED APPLICATIONS)

Page	Product Name	Type								
2	Lonbead®	EMBOSSED	•	•	•	•			•	
2	Loncoin® I	EMBOSSED	•	•				•	•	
3	Loncoin® II	EMBOSSED	•	•				•	•	
4	Loncoin® II Featherweight	EMBOSSED	•	•	•	•		•	•	
5	Loncoin® II Flecks	EMBOSSED	•	•			•	•	•	
5	Loncoin® II Flecks Topseal	EMBOSSED	•	•				•	•	
7	Loncoin® II Flecks UV	EMBOSSED	•	•				•	•	
7	Loncommodore® - MED/USCG	EMBOSSED	•		•	•			•	
8	Loncompass® / MT	EMBOSSED	•	•	•			•	•	
9	Londeck®	EMBOSSED				•		•		•
10	Londeck® Sierra	EMBOSSED				•		•	•	•
10	Londeck® Sol	EMBOSSED				•		•	•	•
11	Loneco® Mesa	EMBOSSED	•	•				•	•	
11	Lonequator®	EMBOSSED	•	•	•	•		•	•	
12	Lonforce®	EMBOSSED	•		•	•		•	•	
12	Lonpearl®	EMBOSSED	•	•	•	•		•	•	
13	Lonplate I®	EMBOSSED	•	•		•		•	•	
13	Lonplate® II	EMBOSSED	•	•	•	•		•	•	
14	Lonplate® Max	EMBOSSED	•	•	•	•		•	•	
15	Lonplate® Patina	EMBOSSED	•	•		•		•	•	
16	Lonpoint® Moonwalk	EMBOSSED	•	•		•		•	•	
16	Lonpolaris®	EMBOSSED	•	•	•			•	•	
17	Lonridge®	EMBOSSED	•			•		•	•	
18	Loncontrail®	SMOOTH	•	•	•	•		•	•	
19	Loncourt® I	SMOOTH	•	•					•	
19	Loncourt® UV	SMOOTH	•	•					•	
21	Londura Featherweight	SMOOTH	•	•	•				•	
24	Loneco® Linen Topseal	SMOOTH	•	•		•		•	•	
25	Loneco® Topseal	SMOOTH	•	•		•		•	•	
26	Lonfloor® Galvanized Topseal	SMOOTH	•	•	•			•	•	
26	Lonfloor® Plain	SMOOTH	•	•					•	
27	Lonfloor® Vista	SMOOTH	•	•					•	
27	Lonmarine® Stone - MED/USCG	SMOOTH	•		•	•		•	•	
29	Lonmarine® Wood - MED/USCG	SMOOTH	•		•	•		•	•	
29	Lonmarine® Trim	TRIM				•		•	•	
30	Lonmat® UV & XL	SMOOTH	•	•			•			
31	Lonmetro® UV	SMOOTH	•	•					•	
31	Lonmistral	SMOOTH	•	•	•		•			
32	Lonmoire® Topseal	SMOOTH	•	•		•		•	•	
33	Lonsand®	SMOOTH	•			•		•	•	
34	Lonsolstice	SMOOTH	•	•	•			•	•	
35	Lonspeck® Topseal	SMOOTH	•	•		•		•	•	
36	Lonstage® MT	SMOOTH	•	•					•	
36	Lonstage® UV	SMOOTH	•	•					•	
37	Lonstrand® Topseal	SMOOTH	•	•		•		•	•	
38	Lonstratus®	SMOOTH	•	•	•			•	•	
38	Lonvirga®	SMOOTH	•	•	•			•	•	
39	Lonwood® Dakota Topseal	SMOOTH	•			•		•	•	
40	Lonwood® Madera Topseal	SMOOTH	•			•		•	•	
40	Lonwood® Marine	SMOOTH	•	•		•		•	•	
41	Lonwood® Natural Topseal	SMOOTH	•	•		•		•	•	
42	Lonwood® Performa	SMOOTH	•	•					•	
42	Lonwood® with Foam	SMOOTH	•	•					•	
43	Lonzebra Topseal	SMOOTH	•	•		•		•	•	
43	LonwovenTopseal	SMOOTH	•	•		•		•	•	

Printed documents are uncontrolled.
Please refer to LONSEAL.com for the most current version of this document.

All technical information including installation manuals, specifications, warranties and maintenance guidelines can be found at www.lonseal.com

⚠ WARNING: Cancer and Reproductive Harm
- www.P65Warnings.ca.gov

For complimentary samples, please call 800.832.7111.
Outside the U.S., call +1 310.830.7111

Lonseal, Inc.
928 East 238th Street
Carson, CA 90745 USA

www.lonseal.com

v. Aug 2024

