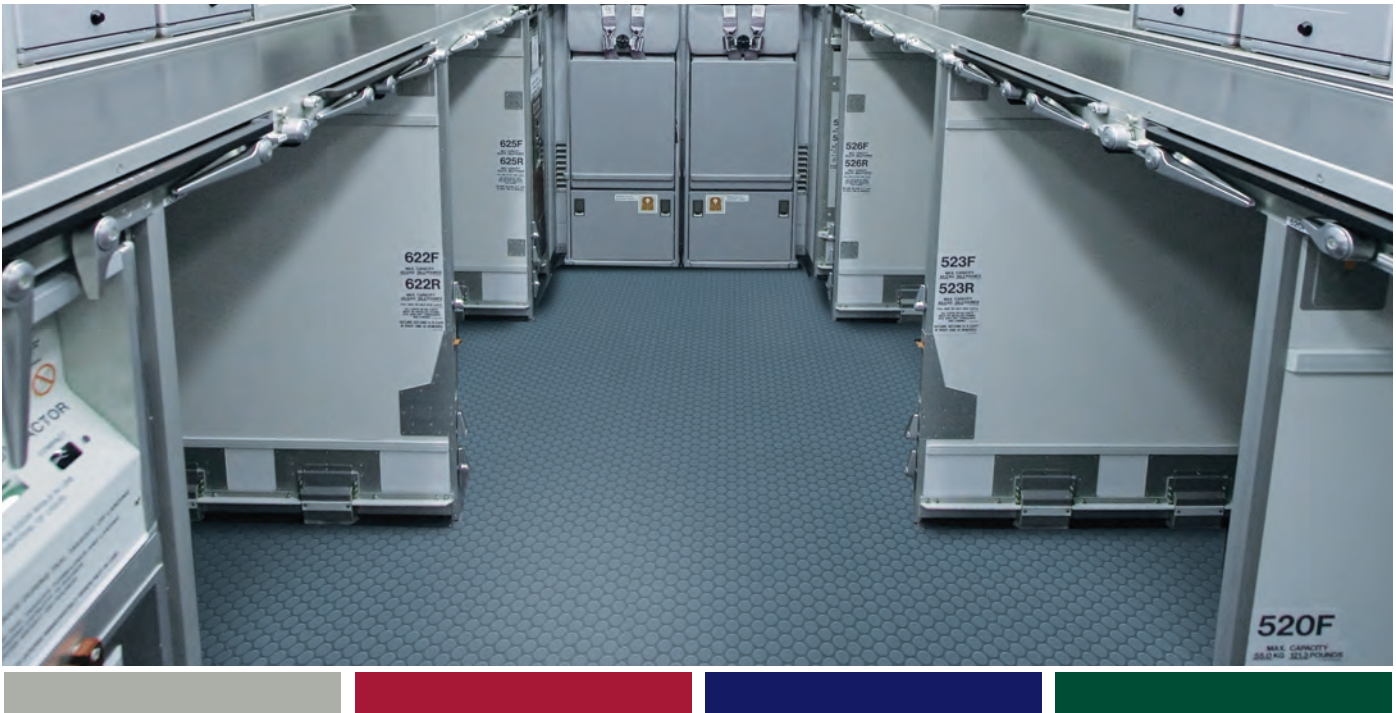




**LONSEAL<sup>®</sup>**  
AIRCRAFT FLOORING





## WHILE OTHERS MEET THE STANDARDS ... ...LONSEAL® FLIES ABOVE IT

- Custom coloring and patterning available upon request
- 6 ft. (1.8 m) and 8 ft. (2.4 m) wide rolls available
- EU REACH compliant formulation
- FEATHERWEIGHT feature and low VOC
- Meets FAR 25.853(a): 12-Second Vertical Flammability
- Meets FAR 25.793: Factor of Sliding Friction

As the leader in resilient vinyl flooring, Lonseal has been providing the aviation industry with unparalleled products since 1972.

Our distinctive selection of embossed and smooth designs comes in four collections: HALO, AXIS, CIRRUS, and MIRAGE. We go the extra mile to meet our aircraft clients' needs by offering custom coloring and patterning, wider sheet widths, and continually updating our product stock to ensure the fastest order shipment possible.

Lonseal's clients include airlines, manufacturers and MROs. Our products can be found in the entrance, galley, flight deck and lavatory areas of nearly every type of aircraft. We also meet most major-manufacturer material specifications and FAA safety standards.

From jumbo passenger jets to cargo carriers, and from charter helicopters to private planes, Lonseal's aircraft flooring has an unparalleled range of surfaces such as moisture resistance, slip resistance, sound dampening, and flame spread control that have proven themselves in countless installations. Our wide-width sheet vinyl makes seam welding virtually obsolete and our proven multi-layer technology protects product color and pattern fidelity against both the toughest traffic and the test of time. This ensures Lonseal's resilient finishes durable in every kind of environment.

Lonseal products also meet the criteria outlined by REACH (Registration, Evaluation, Authorization and Restriction of Chemicals), the European Union regulation that addresses the production and use of chemical substances. REACH is quickly becoming a worldwide production standard and Lonseal is pleased to be at the forefront of this important initiative.

Our aircraft flooring also meets FAA requirements FAR 25.853a (12-second vertical flammability test) and FAR 25.793 (factor sliding friction).

# HALO COLLECTION

The Halo Collection is a series of urban, earthy, raw designs that gives aircraft cabins a more relaxing, inspiring, and beautiful environment. The natural look of the collection is inspired by the Japanese Zen principles, to reflect balance, harmony and relaxation. The color scheme of the Halo Collection incorporates organic accents and creates an emotionally satisfying inflight experience that will transform guests in every aircraft cabin.

As Lonseal's foremost eco-friendly product, **LONSOLSTICE** subtle design suggests a dense cork look and incorporates small flecks of coloring to provide depth and grit.

## FEATURES (sizes shown are nominal)

**Roll Width:** 6 ft. (1.8 m)

**Roll Length:** 60 ft. (18.3 m)

**Overall Thickness:** 0.080 in. (2.0 mm)

**Wear Layer Thickness:** 0.032 in. (0.8 mm)

**Weight:** 74 oz/yd<sup>2</sup> (2509 g/m<sup>2</sup>)

## Meets FAA requirements

FAR 25.853(a): 12-Second Vertical Flammability Test

## EU REACH Compliant Formulation

## EXCLUSIVE LONSEAL® FORMULATIONS:

GreenAir® & GreenMedic®

FEATHERWEIGHT

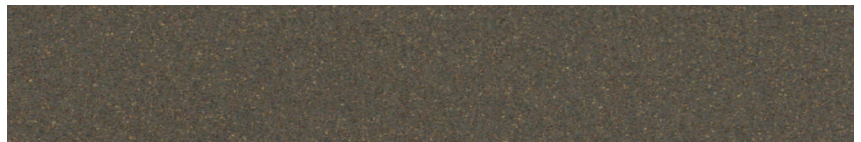
## LONSOLSTICE



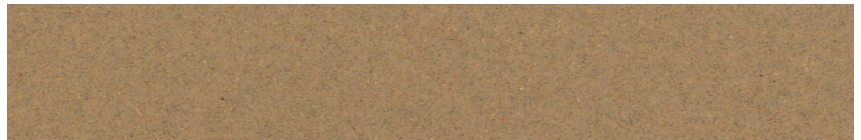
SLF9215D72  
SAGE



SLF9219D72  
GREIGE



SLF9233D72  
GRIDELIN



SLF9235D72  
KHAKI



Note: Due to printing process limitations, printed colors may not match the actual flooring colors. If color match is critical, please request a sample (800-832-7111 / 310-830-7111). Always refer to our website for the most recent color choice. [www.lonseal.com](http://www.lonseal.com)



# AXIS COLLECTION

Axis is an embossed product collection featuring differently scaled coin-stampings that provide a variety of choice in terms of color and design options as well as outstanding traction and slip-resistance.

Constructed in three layers with excellent slip-resistance and dimensional stability properties, **LONCOIN II FEATHERWEIGHT** still manages to be 30% lighter than standard non-textile flooring products, potentially increasing fuel efficiency.

## FEATURES (sizes shown are nominal)

**Roll Width:** 6 ft. (1.8 m) or 8 ft. (2.4 m)

**Roll Length:** 60 ft. (18.3 m)

**Overall Thickness:** 0.092 in. (2.3 mm)

**Wear Layer Thickness:** 0.032 in. (0.8 mm)

**Weight 6ft.:** 88 oz/yd<sup>2</sup> (2894 g/m<sup>2</sup>)

**Weight 8ft.:** 88 oz/yd<sup>2</sup> (2894 g/m<sup>2</sup>)

## Meets FAA requirements

FAR 25.853(a): 12-Second Vertical Flammability Test

FAR 25.793: Factor of Sliding Friction

## EU REACH Compliant Formulation

## EXCLUSIVE LONSEAL® FORMULATIONS:

GreenAir® & GreenMedic®

FEATHERWEIGHT

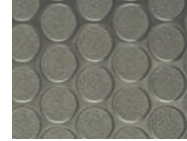
## LONCOIN II FEATHERWEIGHT



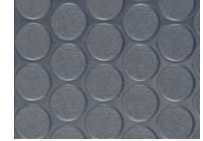
C2F9822M72 (6 ft.)  
C2F9822M96 (8 ft.)  
BROWN



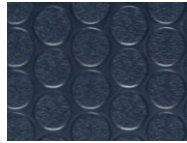
C2F9823M72 (6 ft.)  
C2F9823M96 (8 ft.)  
BLACK



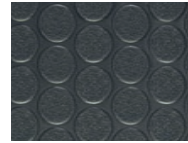
C2F9883M72 (6 ft.)  
C2F9883M96 (8 ft.)  
SONIC GRAY\*



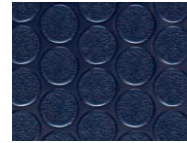
C2F9887M72 (6 ft.)  
C2F9887M96 (8 ft.)  
CERULEAN BLUE\*



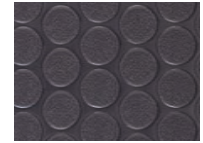
C2F9891M72 (6 ft.)  
C2F9891M96 (8 ft.)  
DARK BLUE



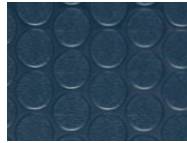
C2F9893M72 (6 ft.)  
C2F9893M96 (8 ft.)  
MEDIUM GRAY



C2F9895M72 (6 ft.)  
C2F9895M96 (8 ft.)  
NAVY BLUE



C2F9896M72 (6 ft.)  
C2F9896M96 (8 ft.)  
PURPLE BLUE



C2F9899M72 (6 ft.)  
C2F9899M96 (8 ft.)  
INDIGO



Loncoin II Featherweight  
Sonic Gray

\* SONIC GRAY and CERULEAN BLUE have a pearlescent tone, shifting hues as the angle view changes.

Please request for a sample swatch for color accuracy.

## LONCOMPASS

The wider coin spacing pattern and bolder colors of **LONCOMPASS** makes it an eye-catching option for both large and small spaces.

## FEATURES (sizes shown are nominal)

**Roll Width:** 6 ft. (1.8 m)

**Roll Length:** 60 ft. (18.3 m)

**Overall Thickness:** 0.092 in. (2.3 mm)

**Wear Layer Thickness:** 0.032 in. (0.8 mm)

**Weight:** 84 oz/yd<sup>2</sup> (2848 g/m<sup>2</sup>)

## Meets FAA requirements

FAR 25.853(a): 12-Second Vertical Flammability Test

FAR 25.793: Factor of Sliding Friction

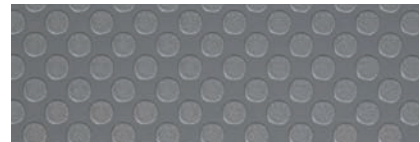
## EU REACH Compliant Formulation

## EXCLUSIVE LONSEAL® FORMULATIONS:

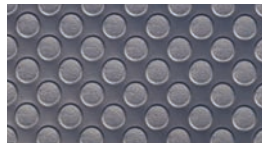
GreenAir®, GreenMedic®, & FEATHERWEIGHT



CPF9347M72  
CAMEL



CPF9348M72  
GRAYSTONE



CPF9352M72  
DENIM\* has a pearlescent tone, shifting hues as the angle view changes. Please request for a sample swatch for color accuracy.



CPF9353M72  
ASPHALT



CPF9395M72  
YALE BLUE

## LONCOMPASS MT



CPF9440M72  
SLATE

A matte version of the Loncompass, LONCOMPASS MT for aircraft embraces a subdued sophistication, seamlessly marrying functionality with aesthetic appeal. This specialized version of Loncompass, devoid of gloss, not only ensures a non-reflective environment but also showcases a modern, minimalist design tailored for the unique confines of aircraft spaces

Note: Due to printing process limitations, printed colors may not match the actual flooring colors. If color match is critical, please request a sample (800-832-7111 / 310-830-7111).

Always refer to our website for the most recent color choice. [www.lonseal.com](http://www.lonseal.com)

# AXIS COLLECTION

## LONEQUATOR

**LONEQUATOR** offers a twist on Lonseal's coin-stamp offerings by featuring a matte surface and smaller patterning for greater subtlety and a more contemporary elegance.

**FEATURES** (sizes shown are nominal)

**Roll Width:** 8 ft. (2.4 m)

**Roll Length:** 60 ft. (18.3 m)

**Overall Thickness:** 0.092 in. (2.3 mm)

**Wear Layer Thickness:** 0.032 in. (0.8 mm)

**Weight:** 84 oz/yd<sup>2</sup> (2848 g/m<sup>2</sup>)

**Meets FAA requirements**

FAR 25.853(a): 12-Second Vertical Flammability Test

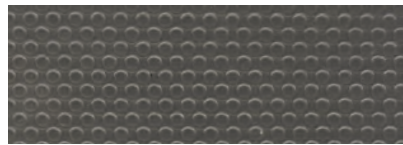
FAR 25.793: Factor of Sliding Friction

**EU REACH Compliant Formulation**

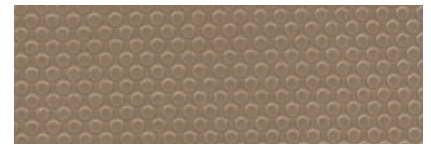
**EXCLUSIVE LONSEAL® FORMULATIONS:**

GreenAir® & GreenMedic®

FEATHERWEIGHT



EQF9914M96  
STORMY SKY



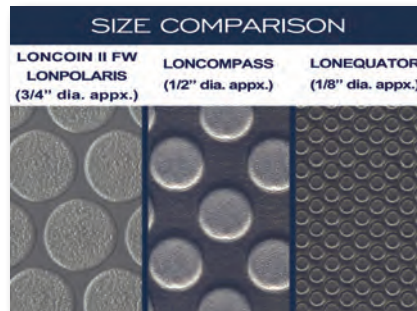
EQF9922M96  
HILLCREST TAN



EQF9983M96  
BLACK STAR



EQF9995M96  
SANTORINI BLUE



## LONPOLARIS

The multi-colored fleck patterns in **LONPOLARIS** add a unique sense of style to the coin embossing that also helps mask routine dirt and scuffing.

**FEATURES** (sizes shown are nominal)

**Roll Width:** 8 ft. (2.4 m)

**Roll Length:** 60 ft. (18.3 m)

**Overall Thickness:** 0.092 in. (2.3 mm)

**Wear Layer Thickness:** 0.032 in. (0.8 mm)

**Weight:** 86 oz/yd<sup>2</sup> (2899 g/m<sup>2</sup>)

**Meets FAA requirements**

FAR 25.853(a): 12-Second Vertical Flammability Test

FAR 25.793: Factor of Sliding Friction

**REACH Compliant Formulation**

**EXCLUSIVE LONSEAL® FORMULATIONS:**

GreenAir® & GreenMedic®

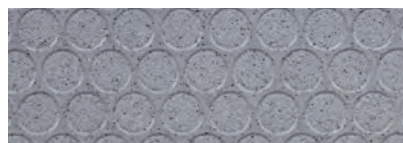
FEATHERWEIGHT



PLF9150M96  
NOIR



PLF9154M96  
TUSCAN TAN



PLF9157M96  
ROMAN SILVER



PLF9193M96  
RAIN



PLF9195M96  
CAROLINA BLUE



Lonpolaris  
Noir

Note: Due to printing process limitations, printed colors may not match the actual flooring colors. If color match is critical, please request a sample (800-832-7111 / 310-830-7111). Always refer to our website for the most recent color choice. [www.lonseal.com](http://www.lonseal.com)





Lonvirga Caviar



Lonequator Santorini Blue



Lonstratus Timberwolf



Loncoin II Featherweight Medium Gray



Loncoin II Featherweight  
Sonic Gray



# CIRRUS COLLECTION

A variety of intriguingly realistic wood looks comprise the Cirrus Collection. From the intricate grain details to the unique characteristics of real woods, Lonseal brings you flooring that is luxurious in style and delivers high performance and quality. The Cirrus Collection provides timeless beauty of wood that enhances the aesthetic environment in an air cabin space.

## LONVIRGA

**LONVIRGA** is an astonishingly realistic wood grain look that adds an intriguing design touch to aircraft interior spaces, particularly lavatories and private cabins.

### FEATURES (sizes shown are nominal)

**Roll Width:** 6 ft. (1.8 m)

**Roll Length:** 60 ft. (18.3 m)

**Overall Thickness:** 0.080 in. (2.0 mm)

**Wear Layer Thickness:** 0.020 in. (0.5 mm)

**Weight:** 72 oz/yd<sup>2</sup> (2441 g/m<sup>2</sup>)

### Meets FAA requirements

FAR 25.853(a): 12-Second Vertical Flammability Test

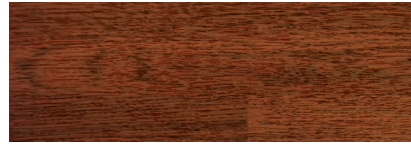
FAR 25.793: Factor of Sliding Friction

### REACH Compliant Formulation

### EXCLUSIVE LONSEAL® FORMULATIONS:

GreenAir® & GreenMedic®

FEATHERWEIGHT



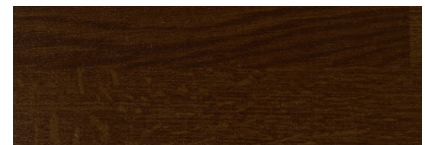
VGf9081D72  
CINNAMON



VGf9087D72  
CAVIAR



VGf9089D72  
CUMIN



VGf9097D72  
CHESTNUT



## LONMISTRAL

**LONMISTRAL's** linear pattern is not only visually extraordinary but also serves to mask dirt and other blemishes. The exotic colors and patterning bring a touch of class and warmth to otherwise cool industrial interiors.

### FEATURES (sizes shown are nominal)

**Roll Width:** 6 ft. (1.8 m)

**Roll Length:** 60 ft. (18.3 m)

**Overall Thickness:** 0.080 in. (2.0 mm)

**Wear Layer Thickness:** 0.020 in. (0.5 mm)

**Weight:** 72 oz/yd<sup>2</sup> (2441 g/m<sup>2</sup>)

### Meets FAA requirements

FAR 25.853(a): 12-Second Vertical Flammability Test

FAR 25.793: Factor of Sliding Friction

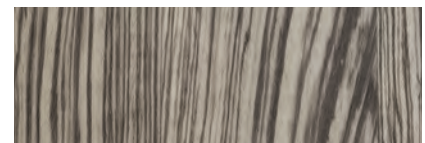
### EU REACH Compliant Formulation

### EXCLUSIVE LONSEAL® FORMULATIONS:

GreenAir®, GreenMedic®, & FEATHERWEIGHT



MTF9059D72  
ESPRESSO



MTF9060D72  
PAYNE'S GRAY



Note: Due to printing process limitations, printed colors may not match the actual flooring colors. If color match is critical, please request a sample (800-832-7111 / 310-830-7111).

Always refer to our website for the most recent color choice. [www.lonseal.com](http://www.lonseal.com)

# CIRRUS COLLECTION

## LONCONTRAIL

**LONCONTRAIL** resembles a natural striated wood-look with a thick combed design. The continuous brush stroke soothes an environment that may be otherwise filled with anxiety and stress. Loncontrail sets the emotion and mood of the passengers and visually expands a space. It is also easy to keep clean and maintained. Scuff marks are easily camouflaged and the surface makes it relatively easy to wipe clean of spills and splashes.

### FEATURES (sizes shown are nominal)

**Roll Width:** 6 ft. (1.8 m)

**Roll Length:** 60 ft. (18.3 m)

**Overall Thickness:** 0.080 in. (2.0 mm)

**Wear Layer Thickness:** 0.020 in. (0.5 mm)

**Weight:** 72 oz/yd<sup>2</sup> (2441 g/m<sup>2</sup>)

### Meets FAA requirements

FAR 25.853(a): 12-Second Vertical Flammability Test

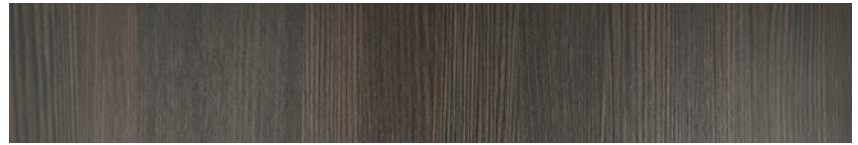
FAR 25.793: Factor of Sliding Friction

### EU REACH Compliant Formulation

### EXCLUSIVE LONSEAL® FORMULATIONS:

GreenAir® & GreenMedic®

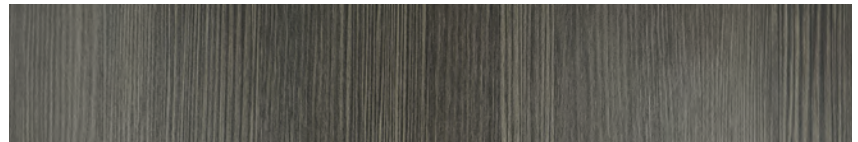
FEATHERWEIGHT



CTF9401D72  
SPICED WINE



CTF9402D72  
KNIGHT'S ARMOR



CTF9403D72  
HICKORY NUT



CTF9404D72  
CHARCOAL BLUE





# MIRAGE COLLECTION

The Mirage Collection features a cloth design that gives a classic, timeless touch to any aircraft space. An abstracted take on a fabric look, the collection's hue variations and slightly stubbed texture provide a sense of strength and durability.

**LONSTRATUS** features a loose weave design that gives a hip, stylish touch to any aircraft space. Lonstratus dances between visual texture and the tactile quality of a linen fabric. It provides a tranquil aircraft cabin environment, while brings a sophistication to the floor.

**FEATURES** (sizes shown are nominal)

**Roll Width:** 6 ft. (1.8 m)

**Roll Length:** 60 ft. (18.3 m)

**Overall Thickness:** 0.080 in. (2.0 mm)

**Wear Layer Thickness:** 0.020 in. (0.5 mm)

**Weight:** 72 oz/yd<sup>2</sup> (2441 g/m<sup>2</sup>)

**Meets FAA requirements**

FAR 25.853(a): 12-Second Vertical Flammability Test

FAR 25.793: Factor of Sliding Friction

**EU REACH Compliant Formulation**

**EXCLUSIVE LONSEAL® FORMULATIONS:**

GreenAir® & GreenMedic®

FEATHERWEIGHT

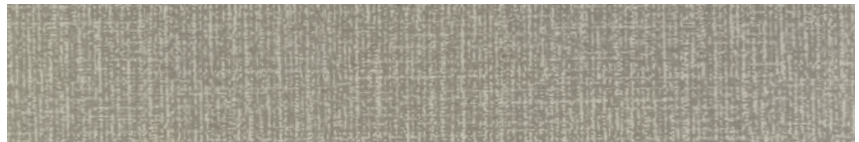
## LONSTRATUS



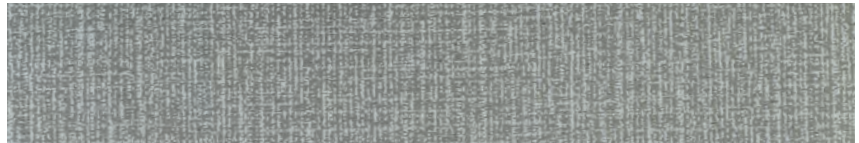
STF9330D72  
ALMOND



STF9331D72  
TAWNY



STF9332D72  
TIMBERWOLF



STF9336D72  
CESIUS



Note: Due to printing process limitations, printed colors may not match the actual flooring colors. If color match is critical, please request a sample (800-832-7111 / 310-830-7111). Always refer to our website for the most recent color choice. [www.lonseal.com](http://www.lonseal.com)



# LONSEAL®: FLYING ABOVE THE STANDARD



Lonseal® strives to provide its customers with the finest quality, environmentally-conscious products. We proactively research what lies ahead in aviation to make sure our product meets the highest industry standards in manufacturing and distribution. Our goal is to continually improve our processes to provide outstanding products and unsurpassed service that, together, deliver premium value to our customers.

**Lonseal flooring is manufactured in a facility that is certified to ISO 9001, JIS Q 9100, and ISO 14001 standards.**

**ISO 9001** is the standard that sets the criteria for developing a quality management system (QMS) in an organization. It is used as the basis for the development of the International Aerospace Quality Group (IAQG) published standards AS9100 and AS9120.

**JIS Q 9100** is equivalent to **AS9100** and sets the criteria for an organization to develop a QMS related to the aviation, space, and defense industries. This standard helps an organization develop processes to monitor and continually improve its design, development, operation, and production aspects. These processes are used to ensure customer satisfaction and that received products meet all their necessary requirements.

**ISO 14001** is the standard that sets the criteria for developing an environmental management system (EMS) in an organization. It is meant to help an organization manage its impact on the environment, helping to decrease pollution and waste through monitoring and continual improvement.

**Lonseal flooring is distributed from a facility that is certified to ISO 9001 and AS9120 standards.**

Similar to AS9100 (JIS Q 9100), **AS9120** focuses on organizations that are Stockist Distributors. While intended for distributors in the aviation, space, and defense industries, it still focuses on the development of processes that can be monitored and continually improved to ensure customer satisfaction and that received products meet all their necessary requirements.

Lonseal® is an environmentally-conscious manufacturer and provides the most functional, sustainable, and durable products available. While other aviation flooring manufacturers have made great progress in meeting industry standards, Lonseal is never satisfied with the status quo. We are always striving to raise the bar with more eco-friendly products through the development of our **GreenVinyl** formulations, which includes **GreenAir**® and **GreenMedic**®. The GreenAir family of products is Lonseal's suite of low VOC and FloorScore® - certified resilient sheet vinyl products which support Indoor Air Quality (IAQ). We have the lowest VOC properties of any vinyl flooring product on the market. Exclusive to Lonseal, GreenMedic is an anti-microbial formulation to inhibit the growth of bacteria that may affect the flooring. *Please note that properties do not protect users or others against bacteria, viruses, germs, and other disease organisms.*

Lonseal became an aviation industry leader because of our FEATHERWEIGHT feature in our aircraft flooring collection. Our aircraft flooring is up to 30% lighter than standard NTF products. Our material's light weight and our high strength-to-weight ratio are most often specified by many aircraft designers and airplane manufacturers.








Printed documents are uncontrolled. Always refer to [LONSEAL.com](http://LONSEAL.com) for the most current version of this document.

All technical Information, including installation manuals, specifications, warranties and maintenance guidelines can be found at [LONSEAL.com](http://LONSEAL.com)

For complimentary samples, please call 800.832.7111.  
Outside the U.S., call: +1 310.830.7111

 **WARNING:** Cancer and Reproductive Harm  
- [www.P65Warnings.ca.gov](http://www.P65Warnings.ca.gov)

Lonseal, Inc., 928 E. 238th Street, Carson, CA 90745 USA  
Phone: 310.830.7111 Fax: 310.830.9986  
[www.lonseal.com](http://www.lonseal.com)

v. Sept 2024