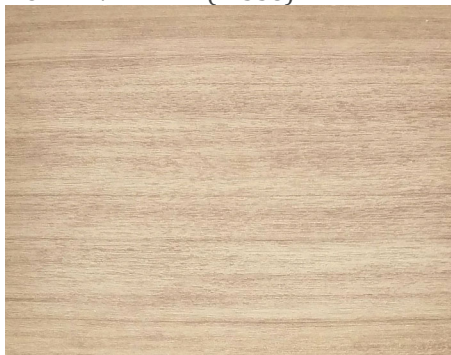


Lonseal Adds New Color to Lonwood® Performa: Honey Vanilla

March 2021

In promoting health and wellness, Lonseal is pleased to announce a new color for Lonwood® Performa.

HONEY VANILLA (W558)

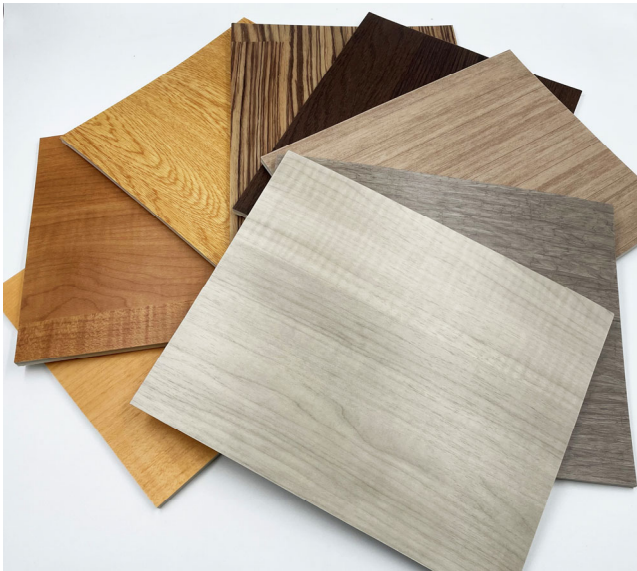


[What do LONSEAL® and athletes have in common?](#) STRENGTH • PERFORMANCE • TRUST

The most dedicated and intense athletes in the world require top of the line equipment to stand up to the intensity of their training. That includes flooring. Lonseal knows that having the highest and strongest quality, with the lowest VOC emitting flooring allows fitness enthusiasts to push their strength to the maximum level.

[LONWOOD® PERFORMA](#) was engineered to perform in explosive and intense fitness environments, especially Hot Yoga. Lonwood Performa is a high quality resilient sheet flooring with shock absorption qualities to help relieve some of the pressures exerted from physical activities. It features an anti-fatigue, cushioned-step, closed-cell foam-backing that is designed especially for high-impact activities.





FEATURES (data shown is nominal):

Roll Width: 6 ft. (1.8 m)

Overall Thickness: 0.220 in. (5.5 mm)

Weight: 1.3 lbs./sq. ft. (6.2 kg/m²)

Roll Length: 60 ft. (18.3 m)

Wear Layer Thickness: 0.020 in. (0.5 mm)

MEETS NCAA: Basketball Rebound Requirements (49" - 54")

ASTM F1303 CLASSIFICATION: Type I, Grade 1, Class C, Commercial Use

ASTM F2772 CLASSIFICATION: Force Reduction Class 1

CERTIFIED: FloorScore®

EXCLUSIVE LONSEAL® FORMULATIONS: GreenAir® & GreenMedic®

LEEDv4/4.1 CONTRIBUTION Building & Construction Interiors:

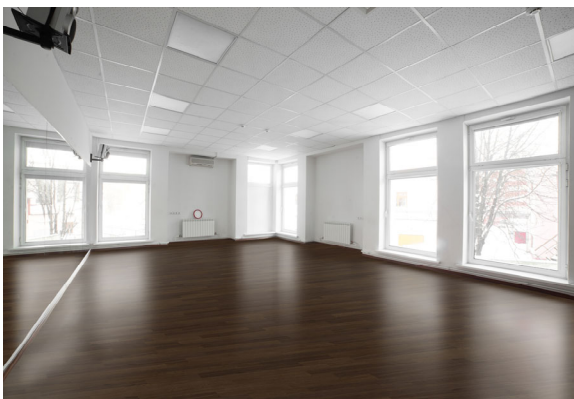
Environmental Product Declarations Option 1

Low-Emitting Materials

Sourcing of Raw Materials Option 2

Pre-Consumer (Post-Industrial) Recycled Content

Lonseal has a reputation for having the most trusted resilient sheet flooring. Trust is a critical component of peak performance. Just like athletes and fitness-minded individuals, Lonseal continually focuses to build and maintain your trust in their brand.



Sable (W547)



Oak (W548)



Silver Lake (W549)



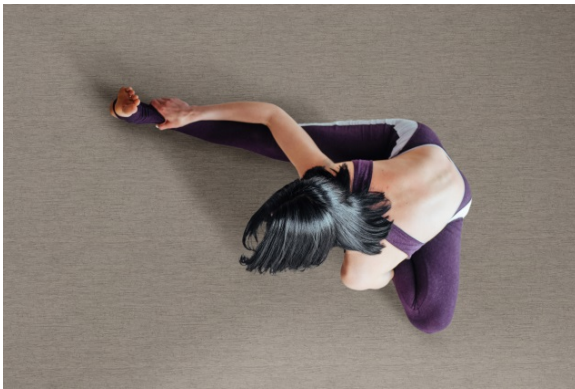
Buckwheat (W550).



Mocha Latte (W553)



Summer Breeze (W556).



Morning Fog (W557)



Honey Vanilla(W558).

About Lonseal:

Celebrating over 49 years of durability and performance in a variety of commercial industries, Lonseal® is known as the “Little Giant” in the resilient sheet vinyl flooring industry. Lonseal offers a unique selection of resilient exterior and interior sheet vinyl flooring in embossed and smooth surfaces. They provide designs that best fit commercial spaces ranging from industrial to healthcare. Lonseal services a range of commercial applications including healthcare, educational, fitness, corporate, exhibits, entertainment stage studios, as well as transportation industries such as EMS, aviation and marine. Lonseal’s products are specified through architects and designers nationwide. For more information, visit LONSEAL.COM or call 310.830.7111.