

# LONSEAL<sup>®</sup>

## FLOORING

## LONCOMPASS<sup>®</sup>

*Axis Aircraft Collection*

Axis is an embossed product collection featuring differently scaled coin-stampings that provide a variety of choice in terms of color and design options as well as outstanding traction which aids in reducing the risk of slipping.

The wider coin spacing pattern and bolder colors of LONCOMPASS makes it an eye-catching option for both large and small spaces.

REACH COMPLIANT: Phthalate free, SVHC free

MEETS FAA REQUIREMENTS:

FAR 25.853(a): 12-Second Vertical Flammability  
FAR 25.793: Factor of Sliding Friction

MEETS FMVSS 302:

CFR 49 §571.302 Flammability of Interior Materials

FEATURES *(data shown is nominal):*

Roll Width: 6 ft. (1.8 m)  
Roll Length: 60 ft. (18.3 m)  
Overall Thickness: 0.092 in. (2.3 mm)  
Wear Layer Thickness: 0.032 in. (0.8 mm)  
Weight: 84 oz./sq. yd. (2848 g/m<sup>2</sup>)

EXCLUSIVE LONSEAL FORMULATIONS:

GreenAir<sup>®</sup>, GreenMedic<sup>®</sup>, FeatherWeight

*\* CPF9352M72 Denim has a pearlescent tone, shifting hues as the angle of view changes. Please request a sample swatch for color accuracy.*

**⚠ WARNING:** Cancer and Reproductive Harm-  
[www.P65Warnings.ca.gov](http://www.P65Warnings.ca.gov)



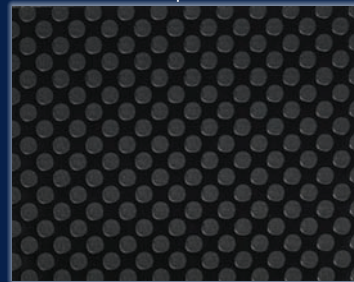
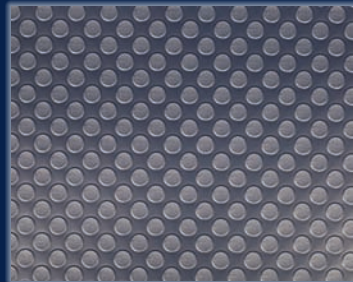
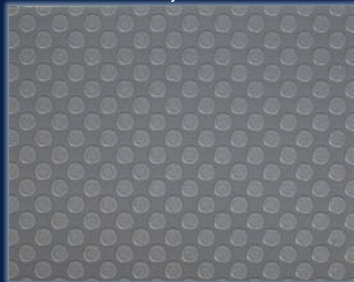
CPF9347M72  
Camel

CPF9348M72  
Graystone

CPF9352M72  
Denim

CPF9353M72  
Asphalt

CPF9395M72  
Yale Blue



LONSEAL, INC.

928 E. 238<sup>TH</sup> STREET, CARSON, CA, 90745

310.830.7111

WWW.LONSEAL.COM

Printing limitations may not represent the true color of the product. If color match is critical, please call us to request a sample. For the most up-to-date color choices, go to LONSEAL.COM.