

# LONSEAL<sup>®</sup>

## FLOORING

## LONBEAD

*Stunning Pearlescent*

One of Lonseal's most striking offerings, LONBEAD is a luxuriously textured surface consisting of an embossing of small pearl-like drops that form a richly glossy and elegant design. The opulent color palette is timelessly chic and has enlivened numerous display, retail and hospitality spaces.

### FEATURES *(data shown is nominal):*

- Roll Width: 6 ft. (1.8 m)
- Roll Length: 60 ft. (18.3 m)
- Overall Thickness: 0.100 in. (2.5 mm)
- Wear Layer Thickness: 0.035 in. (0.9 mm)
- Weight: 0.8 lbs./sq. ft., 275 lbs./roll

### ASTM F1303 CLASSIFICATION:

Type I, Grade 1, Class B, Commercial Use

### CERTIFIED:

FloorScore®

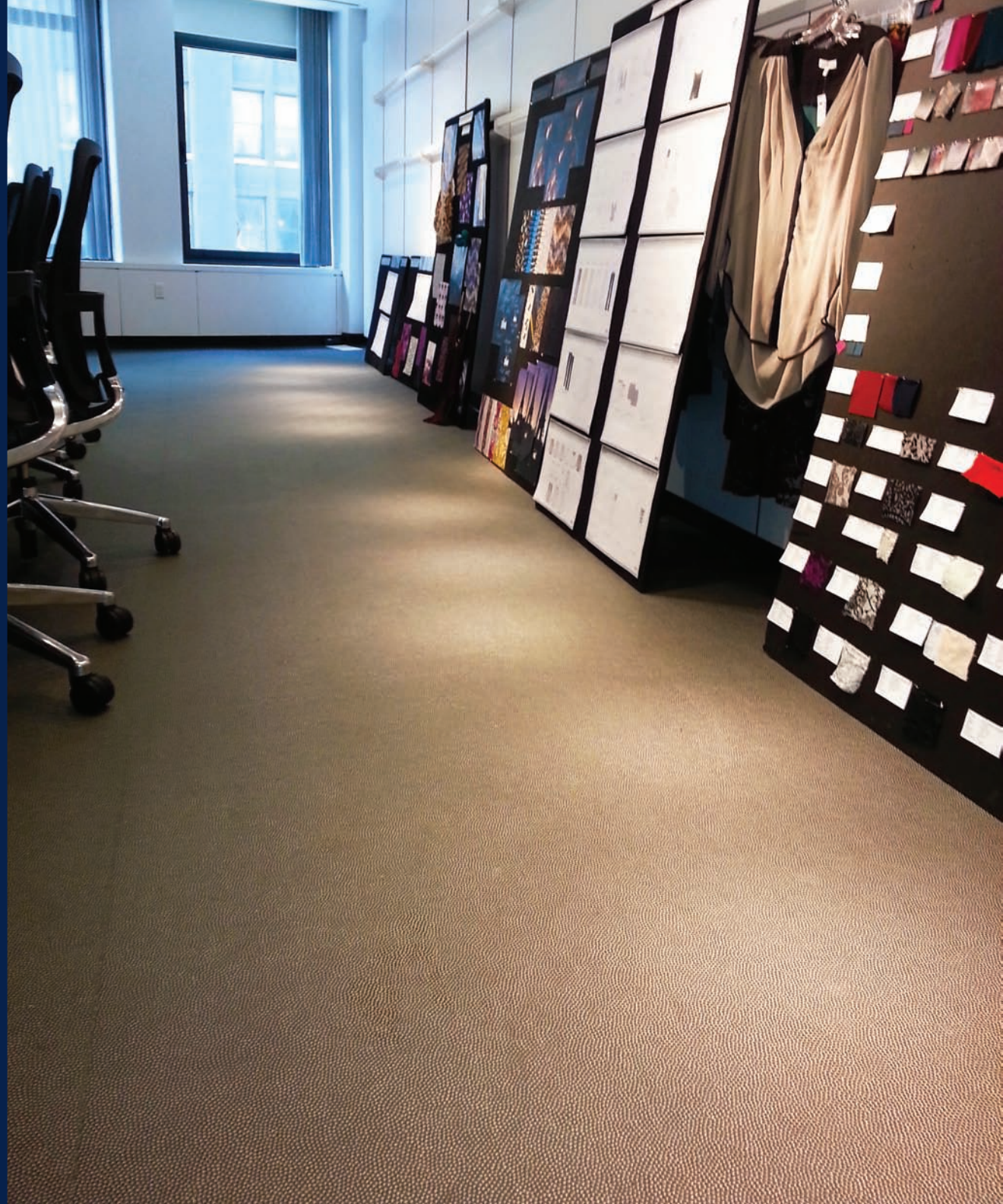
### EXCLUSIVE LONSEAL® FORMULATIONS:

GreenAir® & GreenMedic®

### LEEDv4 CONTRIBUTION Building & Construction Interiors:

- Environmental Product Declarations Option 1
- Sourcing of Raw Materials Option 2
- Low-Emitting Materials
- 20%-40% Post-Industrial Recycled Content

*\* Because of the light color of #301 Opal, Lonseal highly recommends the use of six coats of finish. More frequent maintenance procedures are necessary to ensure a long lasting installation. In addition, areas of prolonged UV exposure should be avoided to prevent unwanted discoloration of the flooring.*





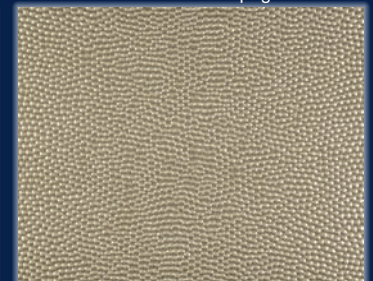
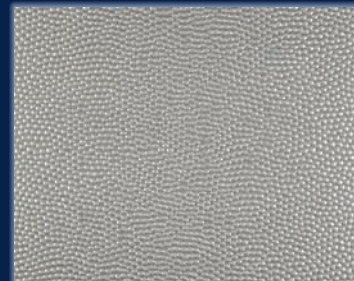
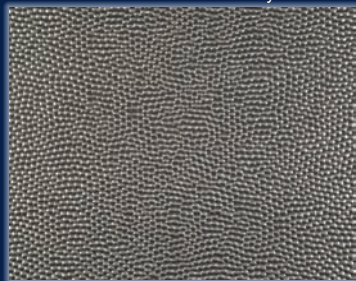
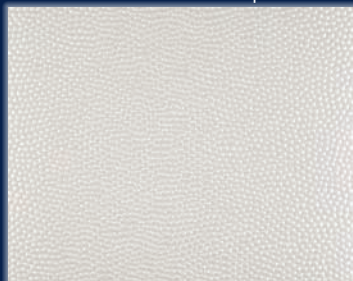
Product #: B301  
Color # Name: 301 Opal\*

Product #: B303  
Color # Name: 303 Onyx

Product #: B304  
Color # Name: 304 Aquamarine

Product #: B305  
Color # Name: 305 Moonstone

Product #: B306  
Color # Name: 306 Champagne Garnet



LONSEAL, INC.

928 E. 238<sup>TH</sup> STREET, CARSON, CA, 90745

310.830.7111

WWW.LONSEAL.COM

Printing limitations may not represent the true color of the product. If color match is critical, please call us to request a sample. For the most up-to-date color choices, go to LONSEAL.COM.