

LONSEAL[®]

FLOORING

LONWOVEN Topseal

Our LONWOVEN design offers a timeless and elegant aesthetic that combines the natural texture of linen with the durability and convenience of sheet vinyl. This meticulously crafted flooring pattern replicates the look and feel of woven linen fabric, infusing any space with sophistication. The subtle variations in color and texture create depth, resulting in visually captivating and inviting atmosphere. Plus, Lonseal's exclusive Topseal formulation ensures reduced scuffing, simplified maintenance, and extended lifespan.

FEATURES *(data shown is nominal):*

Roll Width: 6 ft. (1.8 m)

Roll Length: 60 ft. (18.3 m)

Overall Thickness: 0.080 in. (2.0 mm)

Wear Layer Thickness: 0.020 in. (0.5 mm)

Weight: 0.6 lbs./sq. ft. (3.1 kg/m²)

PHTHALATE FREE:

REACH Compliant, SVHC free

MEETS FMVSS 302:

CFR 49 §571.302 Flammability of Interior Materials

ASTM F1303 CLASSIFICATION:

Type I, Grade 1, Class B, Commercial Use

CERTIFIED:

FloorScore[®]

EXCLUSIVE LONSEAL FORMULATIONS:

Topseal, GreenAir[®] & GreenMedic[®]

LEEDv4.1 CONTRIBUTION B & C Interiors:

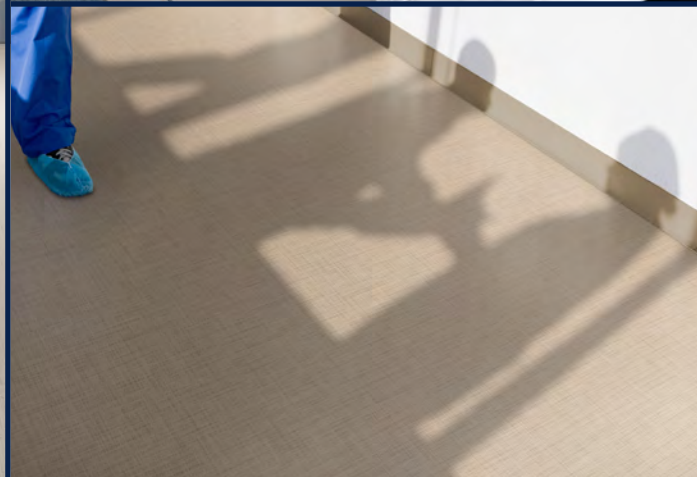
Environmental Product Declarations Option 1

Sourcing of Raw Materials Option 2

Low-Emitting Materials

⚠ WARNING: Cancer and Reproductive Harm-
www.P65Warnings.ca.gov





WN611
Gray Suit

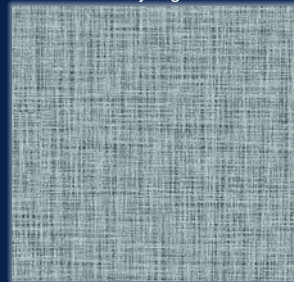
WN612
Cookie Dough

WN613
Friar's Brown

WN614
Sky High

WN615
Sand Dollar

WN616
Warm Milk



LONSEAL, INC.

928 E. 238TH STREET, CARSON, CA, 90745

310.830.7111

WWW.LONSEAL.COM

Printing limitations may not represent the true color of the product. If color match is critical, please call us to request a sample. For the most up-to-date color choices, go to LONSEAL.COM.