

LONSEAL[®]

FLOORING



HOSPITALITY



HEALTHCARE



FITNESS



CORPORATE



EDUCATION

Flooring Reimagined



ABOUT LONSEAL®: “The Little Giant”

Celebrating over 52 years of durability and performance in a variety of commercial industries, Lonseal® offers a unique selection of resilient sheet vinyl flooring in exterior and interior, embossed, smooth, fitness and wood-grain surfaces. We provide finishes of exceptional beauty and utility which are as economical as they are exhilarating. Servicing a range of commercial applications including healthcare, education, fitness, corporate, retail, and hospitality, Lonseal’s products are specified through architects and designers nationwide.

COMPANY HISTORY:

Lonseal, Inc. is a subsidiary of Lonseal Corporation in Tokyo and was established in Southern California in 1972. The company quickly established itself as a provider of unique flooring designs with distinctive color choices. In the early 80’s, Lonplate (page 10) — the original steel-plate design adapted to resilient flooring — put Lonseal on the map as a creator of innovative, embossed products. Additionally, Lonseal’s technological advances bolstered the company’s reputation as it infused products with pliable properties not typically associated with vinyl.

Lonseal is known as “the little giant” in the resilient sheet vinyl flooring industry. Our corporate sales office in Carson, California, has a team with an average of 35 years of sheet vinyl experience! Our product line is most often specified by designers and architects because we focus on making one thing ... products that will over-deliver quality. Not only does our flooring exceed expectations, Lonseal products can easily customize products to meet our clients’ needs.

“THE LITTLE GIANT”

CONTENTS

About Lonseal	Page 1
Topseal	Page 3
Embossed	Page 5
Smooth	Page 14
Fitness	Page 30
Exterior Decking	Page 33
GreenVinyl Story	Page 36
Advantages of Vinyl	Page 37
GreenVinyl Chart	Page 38

AFFILIATIONS, CERTIFICATIONS AND MEMBERSHIPS



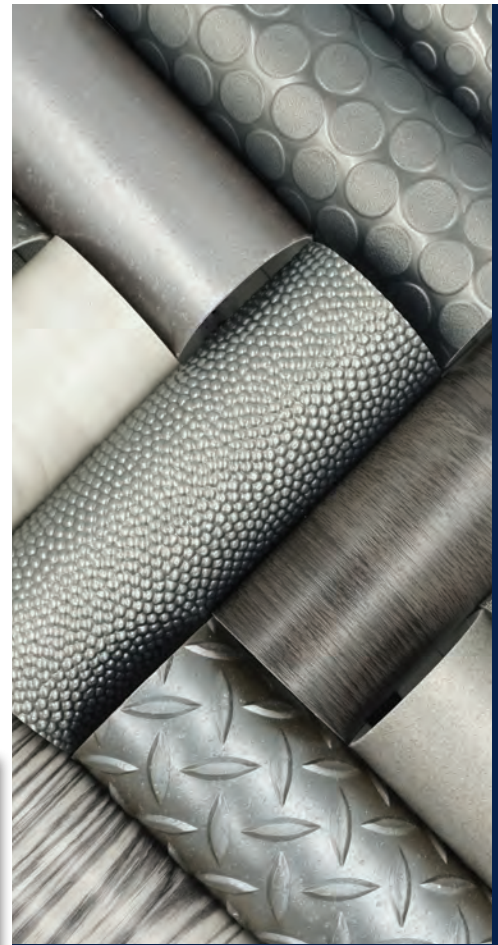
EXCLUSIVE LONSEAL® FORMULATIONS



For over 21 years, Lonseal Corporation has proudly been certified to be in conformance with JIS Q 9001 (equivalent to AS9100), the International Quality Assurance Standard. Since inception, the company has adhered to the highest level of manufacturing and safety standards in the industry.

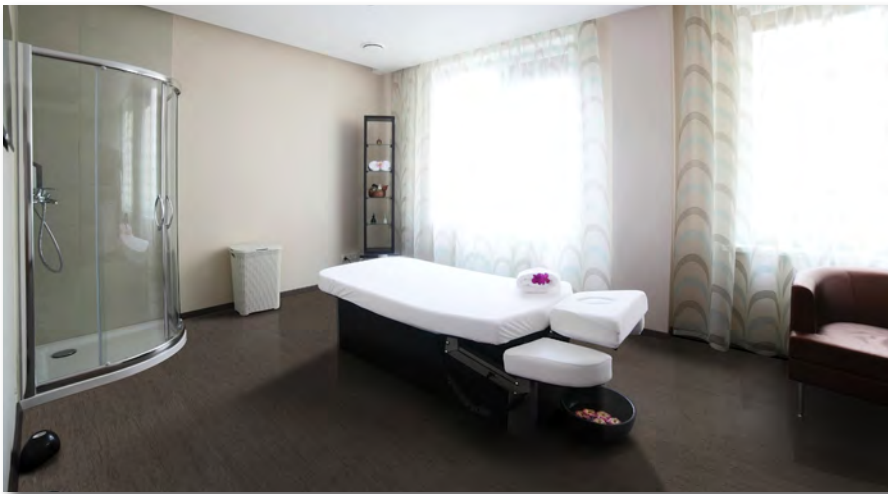
Additionally, Lonseal has long been a leader in eco-friendly manufacturing as evidenced by our GreenAir® Collection for low VOCs, our exclusive GreenMedic® anti-microbial formulation to protect the flooring from degradation, and FloorScore® certified products which support Indoor Air Quality (IAQ). *See our GreenVinyl story on page 36.*

Lonseal pushes the limits of conventional vinyl, leading the sheet vinyl flooring industry in exciting new directions through technological, visual, and textured innovations. Our inspiration comes from the environment in which we live. We create transitional designs that combine the best of traditional and contemporary compositions to create a classic look that never goes out of style. Our goal is to connect interior environments with the rest of humanity. We take an intellectual approach and invest our time in researching the right flooring designs for various interior environments. We design patterns that balances function with beneficial effects to create a ... **FLOORING REIMAGINED.**



FLOORING REIMAGINED

FLOORING REIMAGINED



Lonstrand SD#258 Black Lava



Lonwood Natural #W7453 Prairie and Loneco Linen #EL331 Oatmeal - Cayuga Medical Center, Ithaca, NY



Lonwood Natural Topseal
W7462 Gentle Wind
Texas Childrens Hospital, Houston, TX

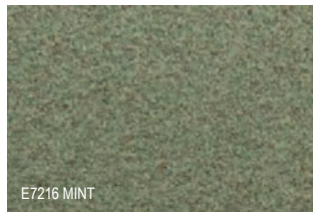


Loneco Linen Topseal
EL334 Wheat and EL333 Ash

WHAT IS TOPSEAL?

- A factory-applied urethane finish that creates a “no-wax” floor. It protects, reduces scuffing and simplifies routine maintenance. It is now available as standard on Lonseal’s most popular smooth and wood grain products.
- Applied as a surface coating extends the life of the flooring by protecting it from wear due to staining and soiling.
- An eco-friendly formulation that incorporates Lonseal’s GreenAir® technology for low VOCs, as well as GreenMedic® anti-microbial formulation to protect the flooring from degradation.
- Included in select Lonseal flooring products for commercial industries. All flooring products with the Topseal finish are FloorScore® certified.
- Saves time on maintenance, saves money on life-cycle costs, and saves the environment.

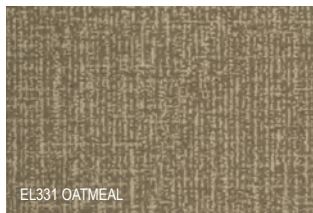
LONSEAL’S TOPSEAL COLLECTION



E7216 MINT

LONECO®

Loneco® is comprised of recycled content and features elegant organic colors that easily conceal scuffing and soiling. Loneco® has been utilized in such diverse commercial spaces as Evergreen Hospital in Washington and Volkswagen dealerships nationwide.



EL331 OATMEAL

LONECO® LINEN

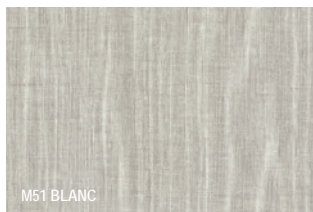
Loneco® Linen features a loose woven design that gives a classic, fashionable touch to any interior space. An abstracted take on a fabric look, Loneco Linen suggests the delicacy of cloth while its hue variations and slightly pebbled texture provide strength and durability.



F7264 BRASS

LONFLOOR® GALVANIZED

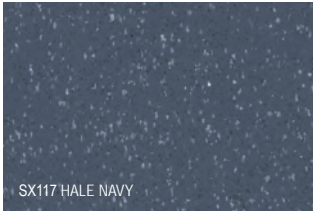
Lonfloor® Galvanized Topseal lends a striking industrial touch to any interior, from office break rooms to retail spaces. The subtle color choices offer warmth while the metallic design gives a polished, sophisticated appeal — particularly evident in the lustrous color, Brass!



M51 BLANC

LONMOIRE®

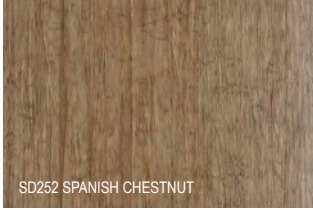
Lonmoire® features a wood-grain pattern that has the characteristics of watery waves of lines. This ripple design that was once coveted by queens, distinguishes the centuries-old, timeless pattern that now gives everyday commercial applications a genteel touch. PHTHALATE FREE



SX117 HALE NAVY

LONSPECK®

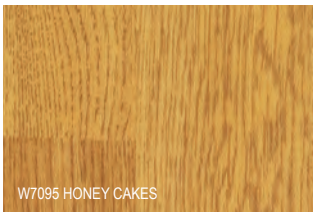
Lonspeck's pattern was designed with the right combination of speck size and sparsity to enhance spatial resolution for a better field of view. The Lonspeck pattern can help hide wear and tear, as well as conceal blemishes. This pattern adds detail to a room and brings character to an overall design.



SD252 SPANISH CHESTNUT

LONSTRAND

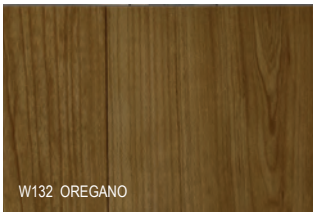
Lonstrand mimics a bark of a tree, which is harmonious with the earth and offers a sense of healing and tranquility. Lonstrand has multiple design purpose. It is subtle enough to provide a smooth transition between rooms and interesting enough to help emphasize a focal point. PHTHALATE FREE



W7095 HONEY CAKES

LONWOOD® DAKOTA

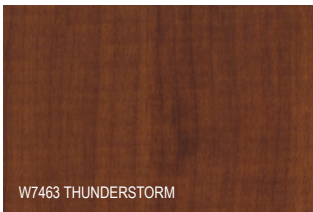
This durable, slightly textured sheet evokes the open grain of oak and the nuance of knot-free plank in warm and inviting colors. Lonwood® Dakota coordinates beautifully with Loneco® and is ideal for corporate and retail, as well as healthcare environments.



W132 OREGANO

LONWOOD® MADERA

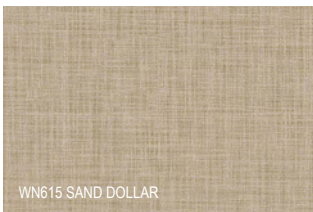
A wide-plank design, Lonwood® Madera features detailed graining that elegantly weaves around beautifully-rendered knotting. This extraordinarily realistic look is further enhanced by articulated plank lines resulting in a design that suggests the strength of old-world craftsmanship.



W7463 THUNDERSTORM

LONWOOD® NATURAL

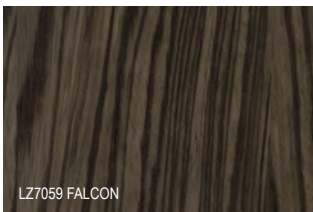
Lonwood® Natural has a realistic maple wood image with striking color schemes taken directly from nature. It provides a room with a timeless design with soft grain patterning. Lonwood Natural has been a regular feature in healthcare, multi-family housing, and corporate settings.



WN615 SAND DOLLAR

LONWOVEN

Lonwoven offers a timeless and elegant aesthetic that combines the natural texture of linen with the durability and convenience of sheet vinyl. This meticulously crafted flooring pattern replicates the look and feel of woven linen fabric, infusing any space with sophistication.



LZ7059 FALCON

LONZEBRA

The exciting pattern of African Zebrawood comes to life in Lonseal's Lonzebra collection, featuring a striated linear pattern that is not only visually extraordinary but also serves to mask dirt and other blemishes. Lonzebra offers clean and simple lines with a warm undertone.



Lonwood Natural #W7464 Summer Night & #W7459 Bark Dust
The Women's Center at Rockford Health System, Rockford, IL



Lonwood Natural #W7462 Gentle Wind & #W7466 Babbling Creek
Ocean Medical Pediatric Center, Brick, NJ



Lonzebra #LZ7068 African Sunset
ASB Bank Services, New Zealand



LONBEAD®

FEATURES *(sizes shown are nominal)*

Roll Width:	6 ft. (1.8 m)
Roll Length:	60 ft. (18.3 m)
Overall Thickness:	0.100 in. (2.5 mm)
Wear Layer Thickness:	0.036 in. (0.9 mm)
Weight:	0.8 lbs./sq. ft. (3.7 kg/m ²)

ASTM F1303 CLASSIFICATION:

Type I, Grade 1, Class B, Commercial Use

CERTIFIED: FloorScore®

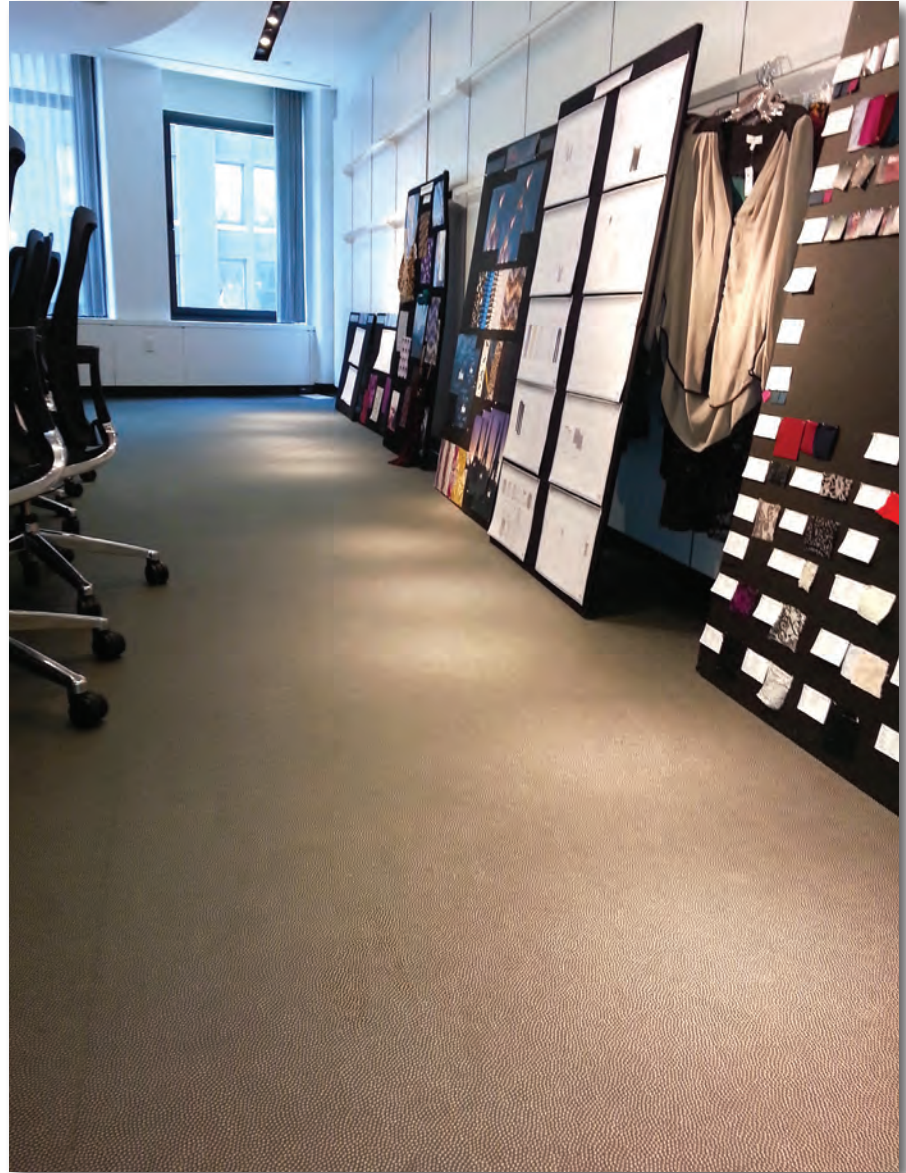
EXCLUSIVE LONSEAL® FORMULATIONS:

GreenAir® & GreenMedic®

LEEDv4.1 CONTRIBUTION B+C INTERIORS:

Environmental Product Declarations Option 1
Sourcing of Raw Materials Option 2
Low-Emitting Materials
Pre-Consumer (Post-Industrial) Recycled Content

One of Lonseal's most striking offerings, LONBEAD® is a luxuriously textured surface consisting of an embossing of small bead-like drops that form a richly glossy and elegant design. The opulent color palette is timelessly chic and has enlivened numerous display, retail and hospitality spaces.



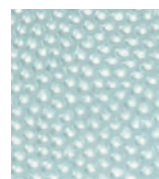
Lonbead #B303 Onyx - Li & Fung, New York City, NY



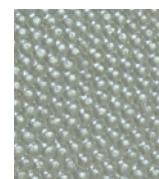
B301
OPAL*



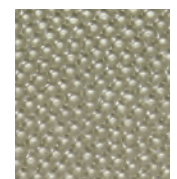
B303
ONYX



B304
AQUAMARINE



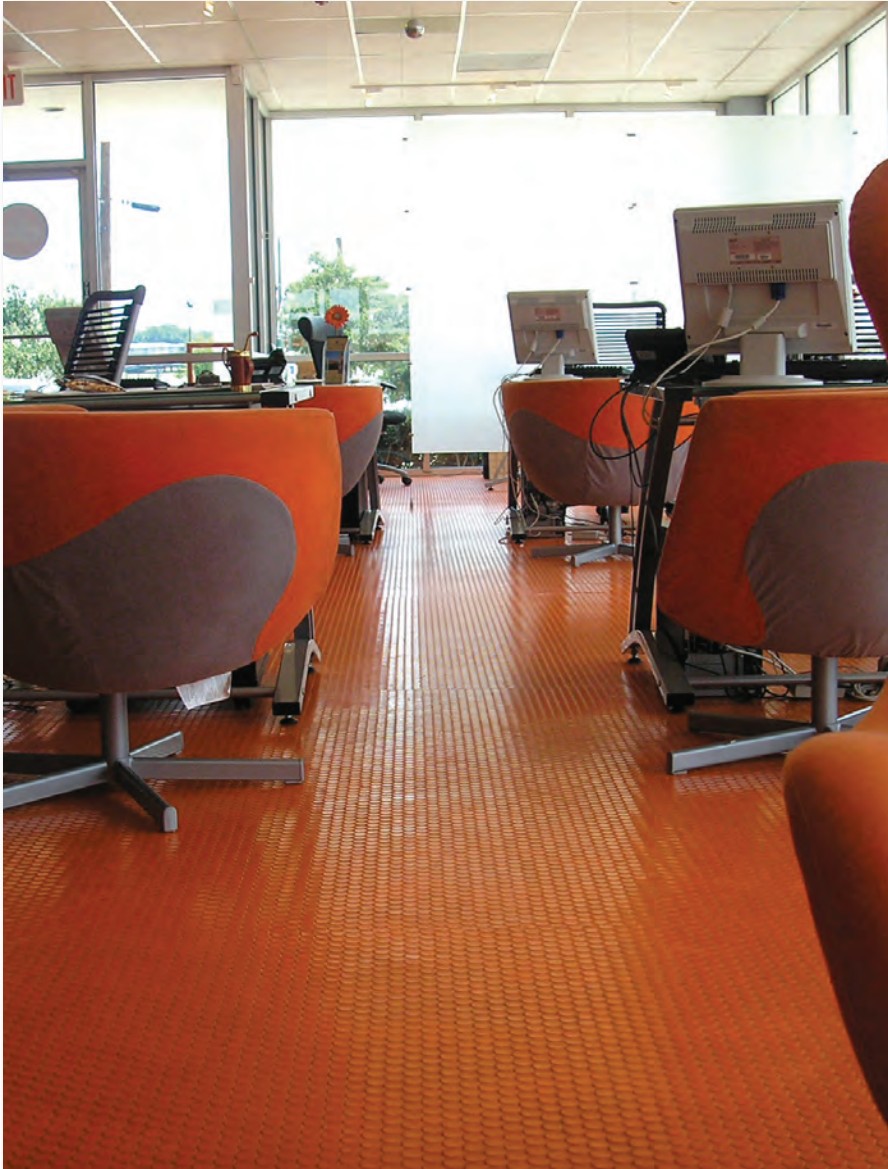
B305
MOONSTONE



B306
CHAMPAGNE
GARNET

* Due to the light color of #B301 Opal, Lonseal highly recommends the use of six coats of finish. More frequent maintenance procedures are necessary to ensure a long lasting installation. In addition, areas of prolonged UV exposure should be avoided to prevent unwanted discoloration of the flooring.

One of Lonseal's pioneering designs in the field of slip-resistant embossing, LONCOIN® I has been demonstrating its outstanding resilience capabilities in high-traffic interiors for decades. With its nickel-sized coin stamping, Loncoin I offers stylish, low-maintenance flooring in two practical color options.



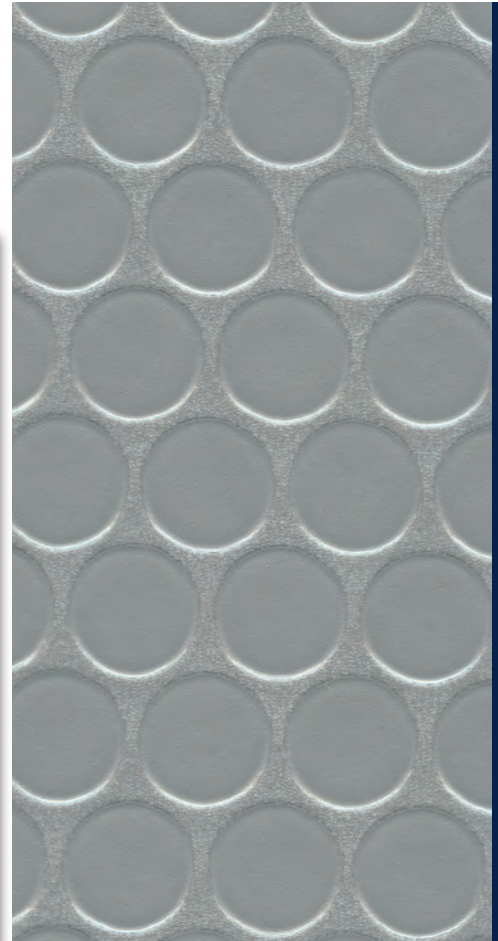
Loncoin I (custom-order color) - Drivers Select, Dallas, TX



C123
BLACK



C124
GRAY



EMBOSSED

LONCOIN® I

FEATURES *(sizes shown are nominal)*

Roll Width:	6 ft. (1.8 m)
Roll Length:	60 ft. (18.3 m)
Overall Thickness:	0.100 in. (2.5 mm)
Wear Layer Thickness:	0.032 in. (0.80 mm)
Weight:	0.8 lbs./sq. ft. (3.8 kg/m ²)

ASTM F1303 CLASSIFICATION:

Type I, Grade 1, Class B, Commercial Use

CERTIFIED: FloorScore®

EXCLUSIVE LONSEAL® FORMULATIONS:

GreenAir® & GreenMedic®

LEEDv4.1 CONTRIBUTION B+C INTERIORS:

- Environmental Product Declarations Option 1
- Sourcing of Raw Materials Option 2
- Low-Emitting Materials
- Pre-Consumer (Post-Industrial) Recycled Content



LONCOIN® II

FEATURES (sizes shown are nominal)

Roll Width:	6 ft. (1.8 m) OR 8 ft. (2.4 m)
Roll Length:	60 ft. (18.3 m)
Overall Thickness:	0.100 in. (2.5 mm)
Wear Layer Thickness:	0.036 in. (0.9 mm)
	0.032 in. (0.8 mm) CTB736
Weight:	0.8 lbs./sq. ft. (4.0 kg/m ²)

ASTM F1303 CLASSIFICATION:

Type I, Grade 1, Class B, Commercial Use

CERTIFIED: FloorScore®

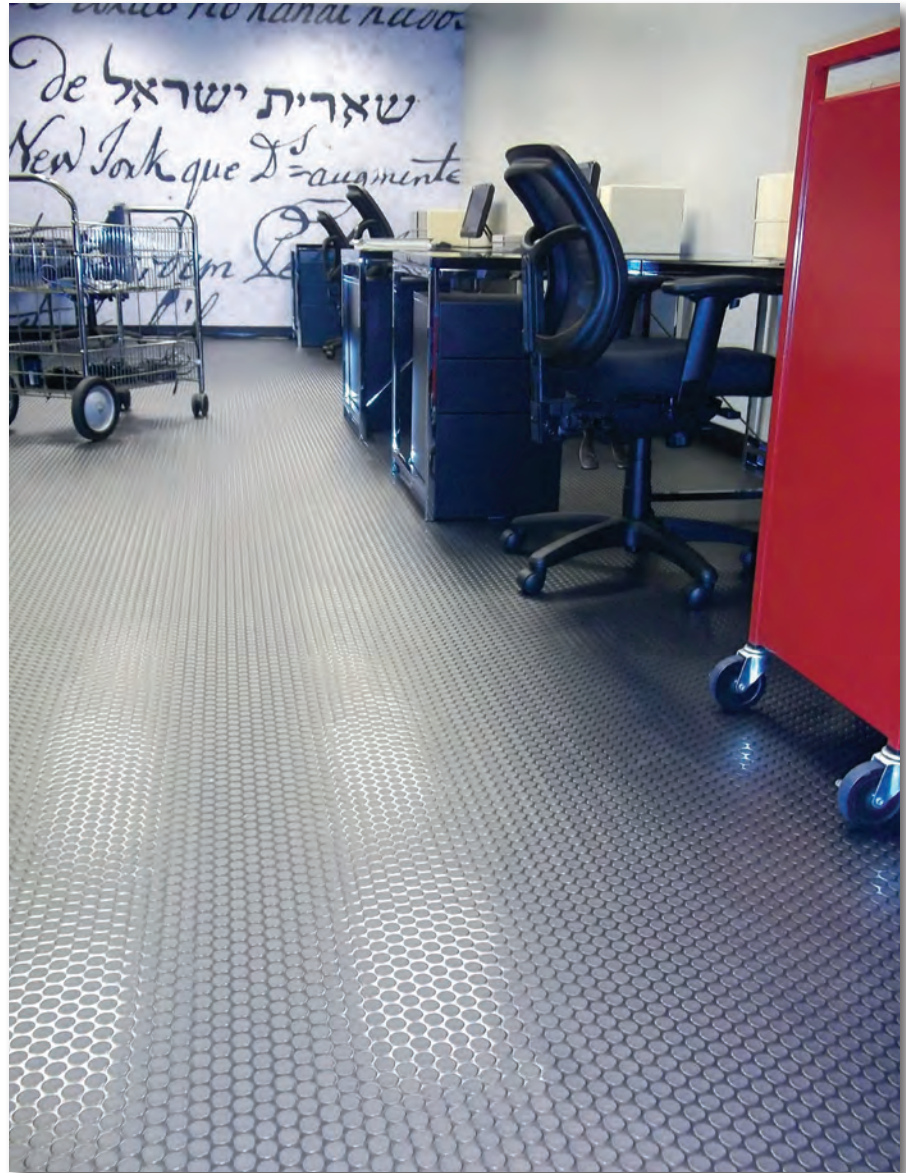
EXCLUSIVE LONSEAL® FORMULATIONS:

GreenAir® & GreenMedic®

LEEDv4.1 CONTRIBUTION B+C INTERIORS:

Environmental Product Declarations Option 1
Sourcing of Raw Materials Option 2
Low-Emitting Materials
Pre-Consumer (Post-Industrial) Recycled Content

The Loncoin series boasts a coin surface embossing that delivers a striking directional design a decorative touch that provides style, enhanced traction, functional, and hides scuffing. LONCOIN® II features a slight texture on the coin stamping which gives surface grip and helps mask scuffing.



Loncoin II #CN183 Sonic Gray - Jewish Heritage Center Computer Room, New York City, NY



CN181
NIMBUS GRAY



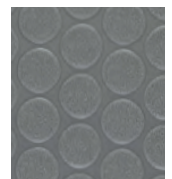
CN183
SONIC GRAY*



CN187
CERULEAN BLUE*



CN190
BIRCH WHITE



CTB736
STONE GRAY
(8FT. ONLY)

* #CN183 Sonic Gray and #CN187 Cerulean Blue are iridescent colors, and their shades will change depending on the viewing angle. Please request a sample swatch for color accuracy.

Taking advantage of its predecessors' embossing and texturing features, LONCOIN® II FLECKS adds multi-colored speckled patterning for enhanced character. The dazzling fleck coloration provides camouflage for simpler maintenance.



Loncoin II Flecks #C152 Sapphire



EMBOSS

LONCOIN® II FLECKS

FEATURES *(sizes shown are nominal)*

Roll Width:	6 ft. (1.8 m) or 8 ft. (2.4 m)
Roll Length:	60 ft. (18.3 m)
Overall Thickness:	0.100 in. (2.5 mm)
Wear Layer Thickness:	0.032 in. (0.8 mm)
Weight:	0.8 lbs./sq. ft. (3.9 kg/m ²)

ASTM F1303 CLASSIFICATION:

Type I, Grade 1, Class B, Commercial Use

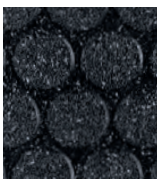
CERTIFIED: FloorScore®

EXCLUSIVE LONSEAL® FORMULATIONS:

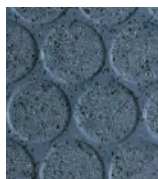
GreenAir® & GreenMedic®

LEEDv4.1 CONTRIBUTION B+C INTERIORS:

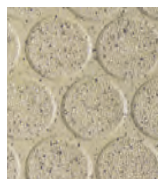
- Environmental Product Declarations Option 1
- Sourcing of Raw Materials Option 2
- Low-Emitting Materials
- Pre-Consumer (Post-Industrial) Recycled Content



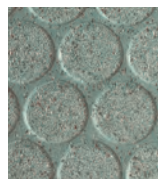
C150 (6 ft.)
C8150 (8 ft.)
ONYX*



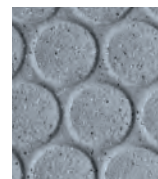
C152 (6 ft.)
C8152 (8 ft.)
SAPPHIRE*



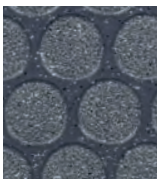
C154 (6 ft.)
C8154 (8 ft.)
SANDSTONE*



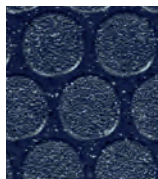
C155 (6 ft.)
JADE



C157 (6 ft.)
C8157 (8 ft.)
MOONSTONE*



C158 (6')
SILICON

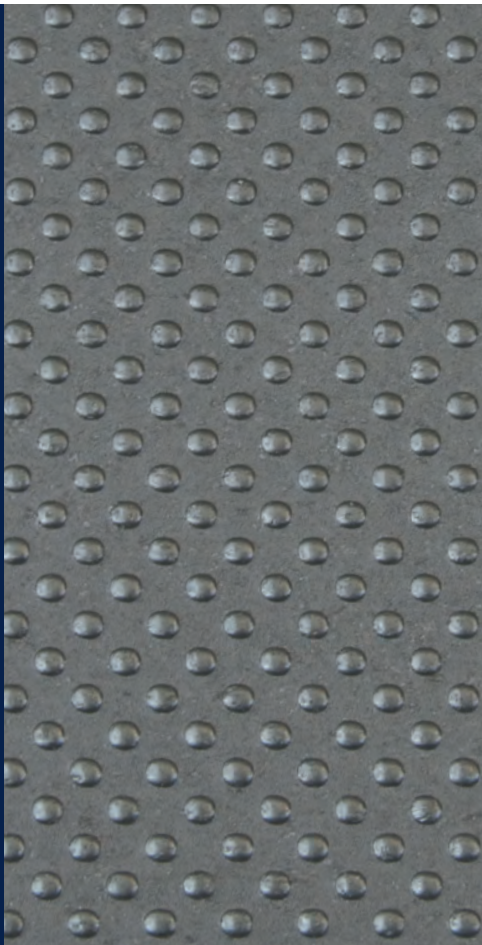


C159 (6')
SODALITE

*Please note that #C150 Onyx, #C152 Sapphire, #C154 Sandstone and #C157 Moonstone are available in both 6 ft. (1.83 m) and 8 ft. (2.44 m) rolls. All other colors are available in 6 ft. (1.83 m) rolls only unless custom ordered.

Note: Due to printing process limitations, printed colors may not match the actual product colors. If color match is critical, please request a sample at 800.832.7111 or 310.830.7111. For the most up-to-date color choices, go to LONSEAL.COM

EMBOSSED



LONPEARL®

FEATURES *(sizes shown are nominal)*

- Roll Width: 6 ft. (1.8 m)
- Roll Length: 60 ft. (18.3 m)
- Overall Thickness: 0.100 in. (2.5 mm)
- Wear Layer Thickness: 0.032 in. (0.8 mm)
- Weight: 0.9 lbs./sq. ft. (4.2 kg/m²)

ASTM F1303 CLASSIFICATION:

Type I, Grade 1, Class B, Commercial Use

CERTIFIED: FloorScore®

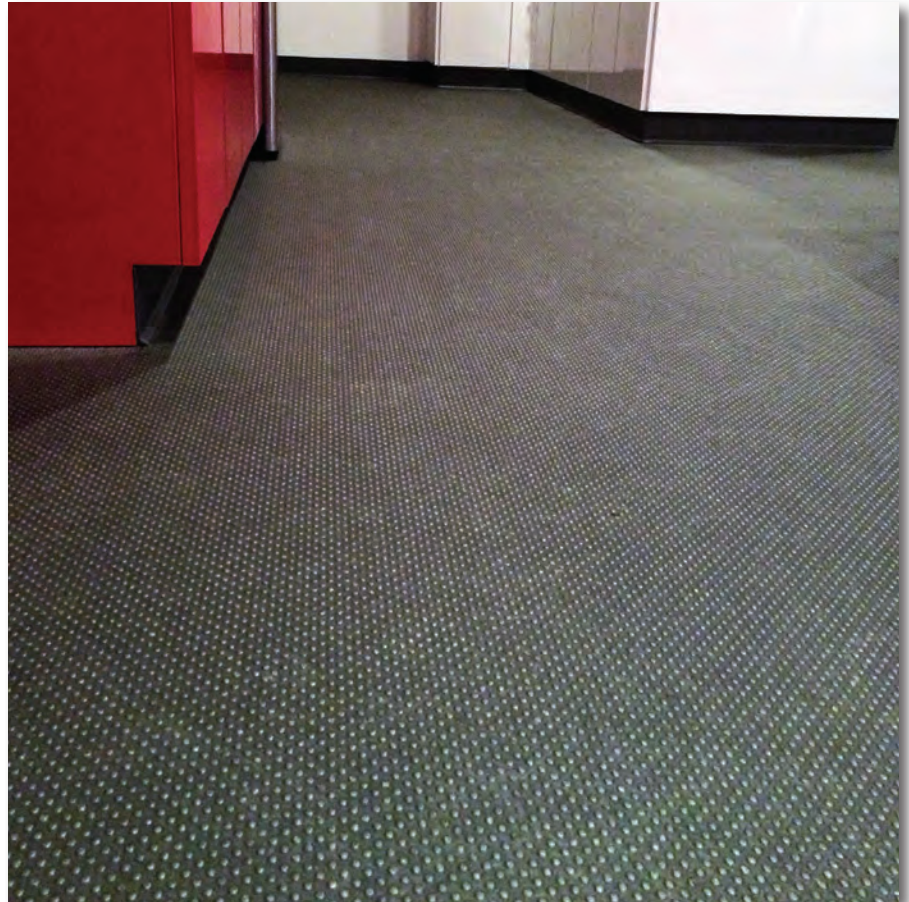
EXCLUSIVE LONSEAL® FORMULATIONS:

GreenAir® & GreenMedic®

LEEDv4.1 CONTRIBUTION B+C INTERIORS:

- Environmental Product Declarations Option 1
- Sourcing of Raw Materials Option 2
- Low-Emitting Materials
- Pre-Consumer (Post-Industrial) Recycled Content

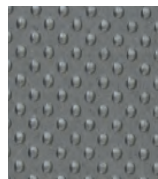
The studded embossing and deeply saturated colors of LONPEARL® offer a stylishly textured surface with excellent camouflaging capabilities. Perfect for high-traffic retail areas as well as corporate spaces in search of a dynamic statement.



Lonpearl #P713 Baleen Gray - CycleBar, Cincinnati, OH



P712 CASPIAN MIST



P713 BALEEN GRAY



P714 ARCTIC WHITE*



P716 MARLIN SILVER



P717 ORCA BLUE



P718 ODESSA BLACK

** Due to the light color of #P714 Arctic White, more frequent maintenance procedures are necessary to ensure a long lasting installation. In addition, areas of prolonged UV exposure should be avoided to prevent unwanted discoloration of the flooring.*

Note: Due to printing process limitations, printed colors may not match the actual product colors. If color match is critical, please request a sample at 800.832.7111 or 310.830.7111. For the most up-to-date color choices, go to LONSEAL.COM

LONPLATE® MAX is a rugged, commercial-grade vinyl flooring designed specifically for vehicles, featuring a unique double-diamond pattern. The Lonplate series infuses an industrial look into any vehicle interior. Designed to withstand the rigors of daily use, our innovative textured surface design, coupled with our durable wear layer helps to conceal scratches and stains, ensuring lasting quality and enhancing traction. Additionally, LONPLATE MAX is easy to clean, maintain, and install, making it the perfect choice for any vehicle flooring needs!



Lonplate Max PX283 Dark Sepia



PX281
SHINING ARMOR



PX282
BLACK ANVIL



PX283
DARK SEPIA



PX284
DEEP SEA



EMBOSS

LONPLATE® MAX

FEATURES (sizes shown are nominal)

Roll Width:	6 ft. (1.8 m)
Roll Length:	60 ft. (18.3 m)
Overall Thickness:	0.140 in. (3.5 mm)
Wear Layer Thickness:	0.068 in. (1.7 mm)
Wear Layer Thickness for P168 Titanium:	0.040 in. (0.8 mm)
Weight:	0.8 lbs./sq. ft. (3.7 kg/m ²)

ASTM F1303 CLASSIFICATION:

Type I, Grade 1, Class B, Commercial Use

CERTIFIED: FloorScore®

PHTHALATE FREE

EXCLUSIVE LONSEAL® FORMULATIONS:

GreenAir® & GreenMedic®

LEEDv4.1 CONTRIBUTION B+C INTERIORS:

Environmental Product Declarations Option 1
Sourcing of Raw Materials Option 2
Low-Emitting Materials

EMBOSSED



LONPLATE® I

FEATURES *(sizes shown are nominal)*

- Roll Width: 6 ft. (1.8 m)
- Roll Length: 60 ft. (18.3 m)
- Overall Thickness: 0.140 in. (3.5 mm)
- Wear Layer Thickness: 0.068 in. (1.7 mm)
- Wear Layer Thickness for P168 Titanium: 0.040 in. (0.8 mm)
- Weight: 0.8 lbs./sq. ft. (3.7 kg/m²)

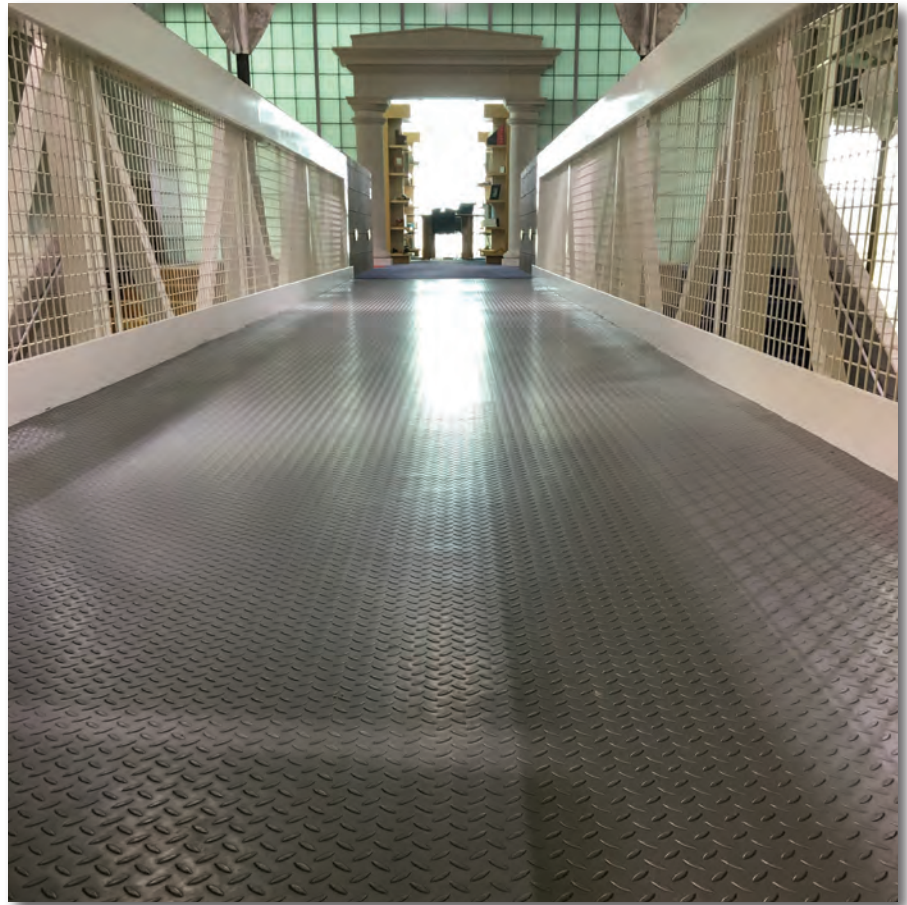
ASTM F1303 CLASSIFICATION:
Type I, Grade 1, Class B, Commercial Use

CERTIFIED: FloorScore®

EXCLUSIVE LONSEAL® FORMULATIONS:
GreenAir® & GreenMedic®

LEEDv4.1 CONTRIBUTION B+C INTERIORS:
Environmental Product Declarations Option 1
Sourcing of Raw Materials Option 2
Low-Emitting Materials

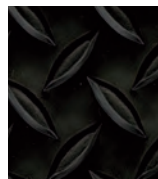
LONPLATE® I offers the rugged endurance of classic steel plating. This durable resilient sheet flooring is Lonseal's toughest skid-resistant product. Perfect for heavy-duty applications in all kinds of interior spaces.



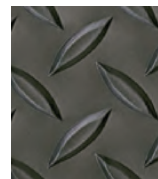
Lonplate I #P164 Gunmetal - Architect Firm, Grand Rapids, MI



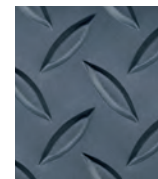
P161
METALLIC GRAY



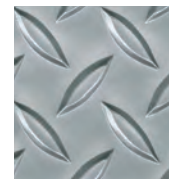
P163
BLACK



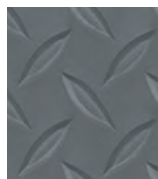
P164
GUNMETAL



P165
SAPPHIRE



P168
TITANIUM



P176
PEWTER

Every bit as tough as the original, but with smaller embossing and wider spacing. LONPLATE® II offers a similar steel-plate pattern that combines the durability of industrial design with six deeply saturated colors.



Lonplate II #P424 Gunmetal - Architect Firm, New York City, NY



EMBOSSED

LONPLATE® II



P411
PUTTY



P419TX
BRICK



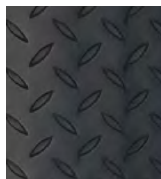
P421 (6 ft.)
P8421 (8 ft.)
MICA*



P424
GUNMETAL



P424TX (6 ft.)
P8424TX (8 ft.)
GUNPOWDER*



P443
GUN BLACK



P443TXM (6 ft.)
P8443TXM (8 ft.)
MIDNIGHT*

FEATURES (sizes shown are nominal)

Roll Width:	6 ft. (1.8 m) or 8 ft. (2.4 m)
Roll Length:	60 ft. (18.3 m)
Overall Thickness 6 ft.:	0.120 in. (3.0 mm)
Overall Thickness 8 ft.:	0.100 in. (2.5 mm)
Wear Layer Thickness:	0.040 in. (1.0 mm)
Weight 6 ft.:	0.8 lbs./sq. ft. (3.8 kg/m ²)
Weight 8 ft.:	0.6 lbs./sq. ft. (2.8 kg/m ²)

ASTM F1303 CLASSIFICATION:

Type I, Grade 1, Class B, Commercial Use

CERTIFIED: FloorScore®

EXCLUSIVE LONSEAL® FORMULATIONS:

GreenAir® & GreenMedic®

LEEDv4.1 CONTRIBUTION B+C INTERIORS:

- Environmental Product Declarations Option 1
- Sourcing of Raw Materials Option 2
- Low-Emitting Materials
- Pre-Consumer (Post-Industrial) Recycled Content

* Please note that #P421 Mica, #P424TX Gunpowder and #P443TXM Midnight are available in both 6 ft. (1.83 m) and 8 ft. (2.438 m) rolls (8' ft. rolls have a thinner gage of 2.0 mm thickness). All other colors are available in 6 ft. (1.83 m) rolls only unless custom ordered.

Note: Due to printing process limitations, printed colors may not match the actual product colors. If color match is critical, please request a sample at 800.832.7111 or 310.830.7111. For the most up-to-date color choices, go to LONSEAL.COM

EMBOSSED



LONPLATE® PATINA is resilient sheet vinyl surface with high-tech metallic coloring and a classic diamond plate embossing. The exclusive galvanized coloration provides excellent camouflage for scuffing and wear pairing the aesthetics of iron with ease of resilient flooring maintenance. Great for providing a high-tech industrial look.

LONPLATE® PATINA

FEATURES (sizes shown are nominal)

- Roll Width: 6 ft. (1.8 m)
- Roll Length: 60 ft. (18.3 m)
- Overall Thickness: 0.140 in. (3.5 mm)
- Wear Layer Thickness: 0.032 in. (0.8 mm)
- Weight: 0.8 lbs./sq. ft. (4.1 kg/²)

ASTM F1303 CLASSIFICATION:
Type I, Grade 1, Class B, Commercial Use

CERTIFIED: FloorScore®

EXCLUSIVE LONSEAL® FORMULATIONS:
GreenAir® & GreenMedic®

LEEDv4.1 CONTRIBUTION B+C INTERIORS:
Environmental Product Declarations Option 1
Sourcing of Raw Materials Option 2
Low-Emitting Materials
Pre-Consumer (Post-Industrial) Recycled Content



Lonplate Patina #P537 Palace Gray

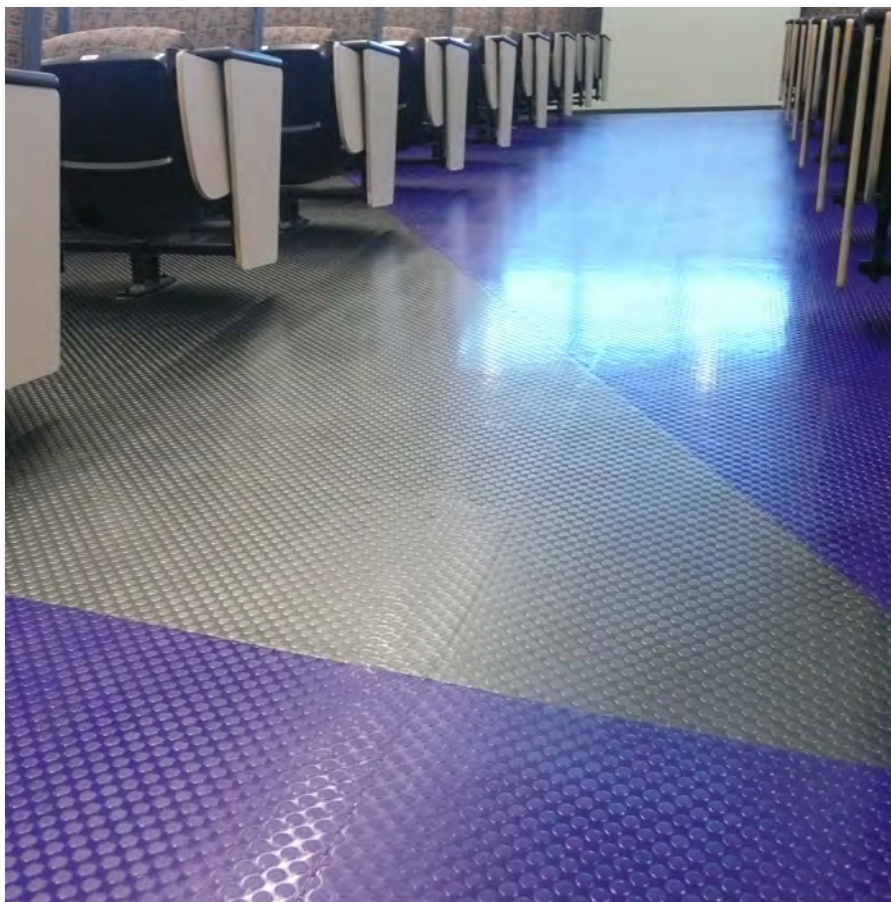


P537
PALACE GRAY

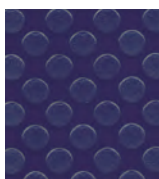


P538
EMPIRE SILVER

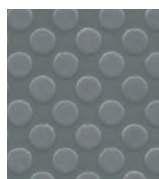
LONPOINT® MOONWALK is similar to our Loncoin series, but is distinguished by smaller (half-inch diameter) and more widely-spaced coin stamping. The slip-resistance feature makes it ideal for busy traffic areas like break rooms and hallways while the intriguing color scheme adds a distinctive designer touch.



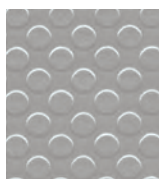
Lonpoint Moonwalk #P345 Blue and #P354 Graphite - Santiago Canyon College, Orange, CA



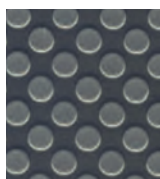
P345
BLUE



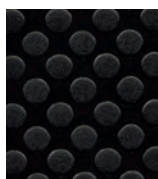
P348
SLATE



P351
PLATINUM



P352
SAPPHIRE*



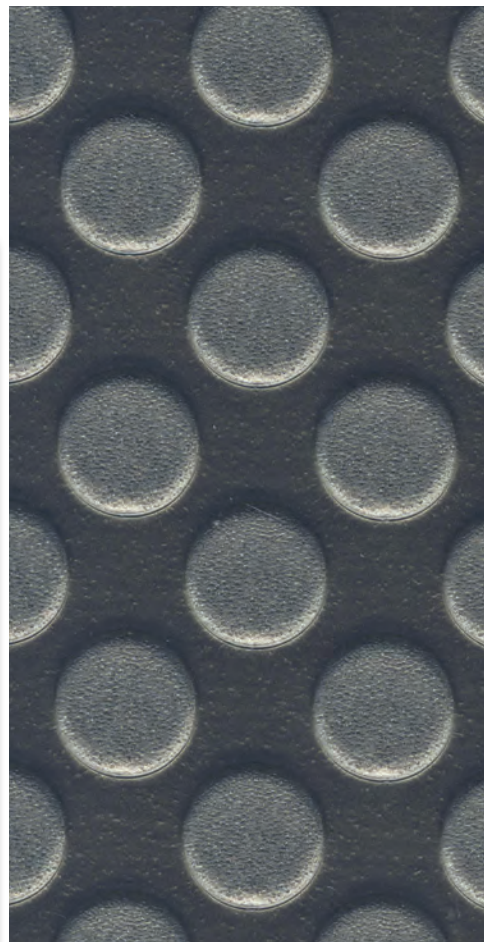
P353
BLACK



P354
GRAPHITE*

* #P352 Sapphire and #P354 Graphite are iridescent colors, and their shades will change depending on the viewing angle. Please request a sample swatch for color accuracy.

Note: Due to printing process limitations, printed colors may not match the actual product colors. If color match is critical, please request a sample at 800.832.7111 or 310.830.7111. For the most up-to-date color choices, go to LONSEAL.COM



EMBOSS

LONPOINT® MOONWALK

FEATURES (sizes shown are nominal)

Roll Width:	6 ft. (1.8 m)
Roll Length:	60 ft. (18.3 m)
Overall Thickness:	0.080 in. (2.0 mm)
Wear Layer Thickness:	0.032 in. (0.8 mm)
Weight:	0.7 lbs./sq. ft. (3.3 kg/m ²)

ASTM F1303 CLASSIFICATION:

Type I, Grade 1, Class B, Commercial Use

CERTIFIED: FloorScore®

EXCLUSIVE LONSEAL® FORMULATIONS:

GreenAir® & GreenMedic®

LEEDv4.1 CONTRIBUTION B+C INTERIORS:

- Environmental Product Declarations Option 1
- Sourcing of Raw Materials Option 2
- Low-Emitting Materials
- Pre-Consumer (Post-Industrial) Recycled Content

SMOOTH



As Lonseal's foremost eco-friendly product, LONECO® TOPSEAL is composed of recycled content and features Lonseal's exclusive GreenAir® technology that reduces VOC emissions and contributes to superior indoor air quality. Additionally, Loneco's organic and earthy colors easily conceal scuffing and soil. Loneco® comes standard with Lonseal's exclusive Topseal formulation, a factory-applied urethane finish that protects the floor, reduces scuffing and simplifies routine maintenance. See page 3 for more information on Topseal.



Loneco #E7215 Sea Coast - Norton Sound Hospital, Nome, AK

LONECO® Topseal

FEATURES *(sizes shown are nominal)*

Roll Width: 6 ft. (1.8 m)
 Roll Length: 60 ft. (18.3 m)
 Overall Thickness: 0.080 in. (2.0 mm)
 Wear Layer Thickness: 0.032 in. (0.8 mm)
 Weight: 0.6 lbs./sq. ft. (2.8 kg/m²)

ASTM F1303 CLASSIFICATION:

Type I, Grade 1, Class B, Commercial Use

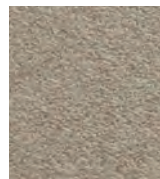
CERTIFIED: FloorScore®

EXCLUSIVE LONSEAL® FORMULATIONS:

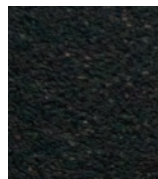
Topseal, GreenAir® & GreenMedic®

LEEDv4.1 CONTRIBUTION B+C INTERIORS:

Environmental Product Declarations Option 1
 Sourcing of Raw Materials Option 2
 Low-Emitting Materials
 Pre-Consumer (Post-Industrial) Recycled Content



E7211
ICE CAP



E7213
MIDNIGHT SKY



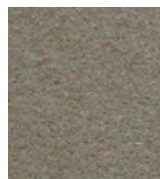
E7215
SEA COAST



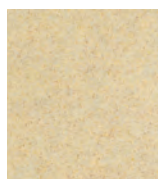
E7216
MINT



E7218
COPPER



E7219
MICA



E7225
Chamomile



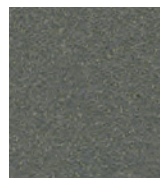
E7230
SACHET



E7231
DEW DROP



E7232
BLUEBELL



E7233
LAVENDER



E7234
SAND DUNE

Utilizing the same formulation of recycled content as Lonseal's popular Loneco® line, **LONECO® LINEN TOPSEAL** features a loose woven design that gives a hip, stylish touch to any interior space. An abstracted take on a fabric look, Loneco® Linen suggests the delicacy of cloth while its hue variations and slightly stubbed texture provide strength and durability. Loneco® Linen also features Lonseal's exclusive Topseal formulation. See page 3 for more information on Topseal.



Loneco® Linen #EL333 Ash - UCLA Rolling Hills Women's Imaging Center - Palos Verdes, CA



EL330
ECRU



EL331
OATMEAL



EL332
HEATHER



EL333
ASH



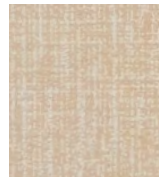
EL334
WHEAT



EL335
ARTICHOKE



EL336
PORPOISE



EL337
COTTON

LONECO® LINEN Topseal

FEATURES *(sizes shown are nominal)*

Roll Width:	6 ft. (1.8 m)
Roll Length:	60 ft. (18.3 m)
Overall Thickness:	0.080 in. (2.0 mm)
Wear Layer Thickness:	0.020 in. (0.5 mm)
Weight:	0.6 lbs./sq. ft. (3.1 kg/m ²)

ASTM F1303 CLASSIFICATION:

Type I, Grade 1, Class B, Commercial Use

CERTIFIED: FloorScore®

EXCLUSIVE LONSEAL® FORMULATIONS:

Topseal, GreenAir® & GreenMedic®

LEEDv4.1 CONTRIBUTION B+C INTERIORS:

- Environmental Product Declarations Option 1
- Sourcing of Raw Materials Option 2
- Low-Emitting Materials
- Pre-Consumer (Post-Industrial) Recycled Content

SMOOTH



LONFLOOR® GALVANIZED Topseal

FEATURES *(sizes shown are nominal)*

Roll Width:	6 ft. (1.8 m)
Roll Length:	60 ft. (18.3 m)
Overall Thickness:	0.080 in. (2.0 mm)
Wear Layer Thickness:	0.032 in. (0.8 mm)
Weight:	0.6 lbs./sq. ft. (3.0 kg/m ²)

ASTM F1303 CLASSIFICATION:

Type I, Grade 1, Class B, Commercial Use

CERTIFIED: FloorScore®

EXCLUSIVE LONSEAL® FORMULATIONS:

Topseal, GreenAir® & GreenMedic®

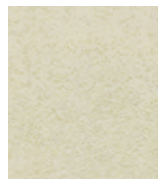
LEEDv4.1 CONTRIBUTION B+C INTERIORS:

- Environmental Product Declarations Option 1
- Sourcing of Raw Materials Option 2
- Low-Emitting Materials
- Pre-Consumer (Post-Industrial) Recycled Content

LONFLOOR® GALVANIZED takes on the look of galvanized metal in a simpler, more industrial direction. The subtle color choices offer warmth, while the stone-like aesthetic has a polished, sophisticated appeal. Lonfloor Galvanized also features Lonseal's exclusive Topseal formulation. *See page 3 for more information on Topseal.*



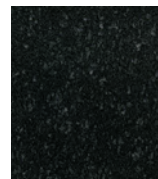
Lonfloor Galvanize Topseal #F7244 Graphite



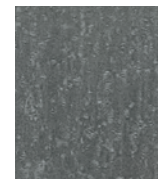
F7240
WHITE DIAMOND*



F7241
PLATINUM



F7243
BLACK PEARL



F7244
GRAPHITE



F7247
GRANITE



F7264
BRASS

** Due to the light color of #F7240 White Diamond, more frequent maintenance procedures are necessary to ensure a long lasting installation. In addition, areas of prolonged UV exposure should be avoided to prevent unwanted discoloration of the flooring.*

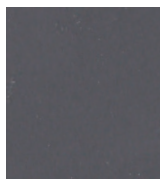
The simplicity of LONFLOOR® PLAIN's smooth-as-mercury surface and subdued color palette give it infinite application possibilities. Its classic elegance can instantly upgrade the most humble interior or put the finishing touch on any high-end space.



Lonfloor Plain #F35 Night



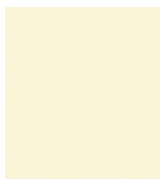
F04
BUFF



F09
STONE



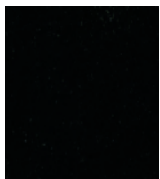
F25
FOG



F30
PARCHMENT*



F31
CONCRETE



F35
NIGHT

* Due to the light color of #F30 Parchment, more frequent maintenance procedures are necessary to ensure a long lasting installation. In addition, areas of prolonged UV exposure should be avoided to prevent unwanted discoloration of the flooring.

Note: Due to printing process limitations, printed colors may not match the actual product colors. If color match is critical, please request a sample at 800.832.7111 or 310.830.7111. For the most up-to-date color choices, go to LONSEAL.COM

SMOOTH

LONFLOOR® PLAIN

FEATURES (sizes shown are nominal)

Roll Width:	6 ft. (1.8 m)
Roll Length:	60 ft. (18.3 m)
Overall Thickness:	0.100 in. (2.5 mm)
Wear Layer Thickness:	0.032 in. (0.8 mm)
Weight:	0.7 lbs./sq. ft. (3.6 kg/m ²)

ASTM F1303 CLASSIFICATION:

Type I, Grade 1, Class B, Commercial Use

CERTIFIED: FloorScore®

EXCLUSIVE LONSEAL® FORMULATIONS:

Topseal, GreenAir® & GreenMedic®

LEEDv4.1 CONTRIBUTION B+C INTERIORS:

Environmental Product Declarations Option 1
Sourcing of Raw Materials Option 2
Low-Emitting Materials



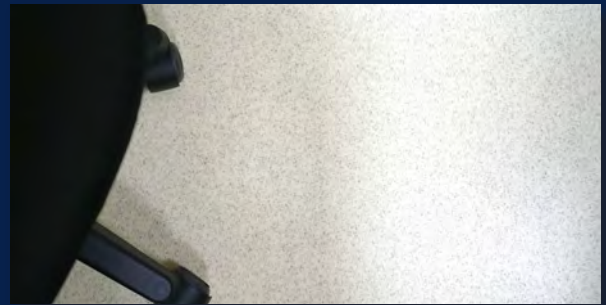
Loneco Topseal E7234 Sand Dune



Lonmoire Topseal M51 Blanc



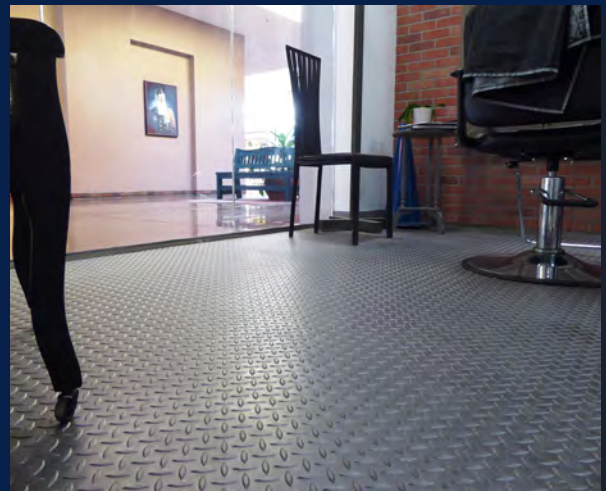
Loneco Linen Topseal EL330 Ecru and EL331 Oatmeal
Lonwood Natural W7462 Gentle Wind



Lonspeck Topseal SX118 Vanilla Bean



Lonpoint Moonwalk P354 Graphite



Lonplate I P161 Metallic Gray



Lonplate II P421 Mica



Lonwood Natural W7467 Singing Birds



Lonwood Performa W547 Sable



Lonstrand Topseal SD252 Spanish Chestnut



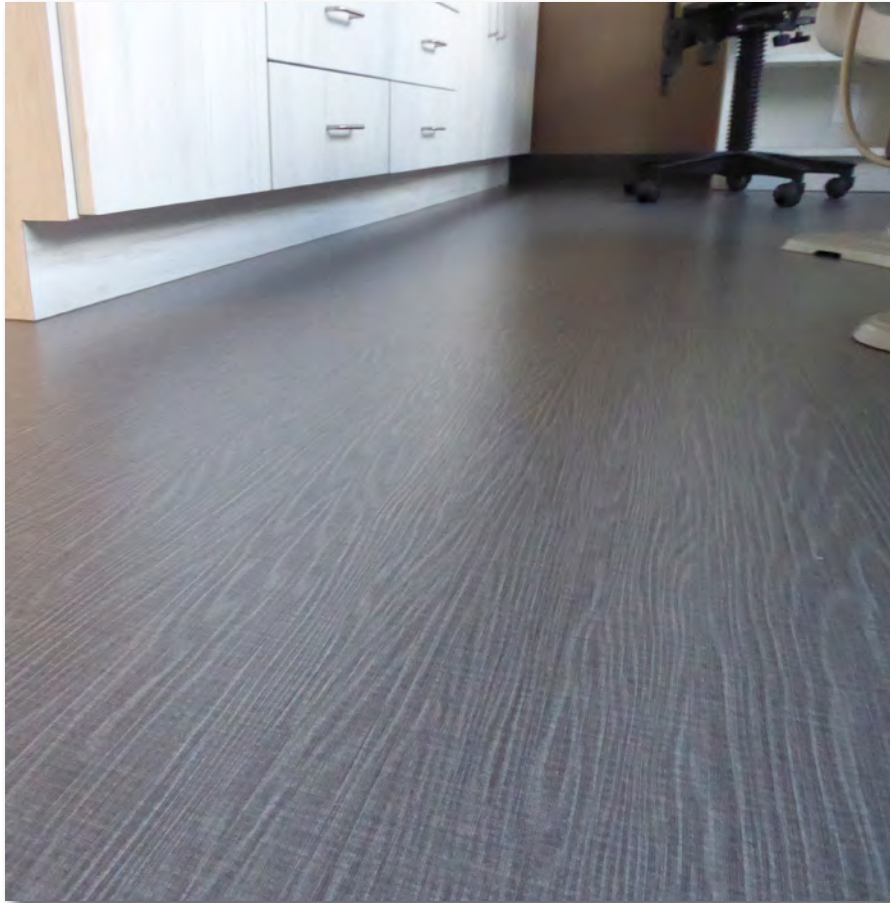
Lonmoire Topseal M51 Blanc



Lonmoire Topseal M51 Blanc, M56 Brun, and M55 Noir

LONMOIRE® TOPSEAL's wood grain pattern has the characteristics of watery waves of lines. This ripple design was once coveted by queens. It distinguishes the centuries-old pattern that now gives everyday commercial spaces a genteel touch. Lonmoire is PHTHALATE FREE and also features Lonseal's exclusive Topseal formulation.

See page 3 for more information on Topseal.



Lonmoire #M54 Gris - Endodontist Office - Minneapolis, MN



M51
BLANC



M52
VERGE D'OR



M53
D'OR



M54
GRIS



M55
NOIR



M56
BRUN



SMOOTH

LONMOIRE® Topseal

FEATURES (sizes shown are nominal)

Roll Width:	6 ft. (1.8 m)
Roll Length:	60 ft. (18.3 m)
Overall Thickness:	0.080 in. (2.0 mm)
Wear Layer Thickness:	0.020 in. (0.5 mm)
Weight:	0.7 lbs./sq. ft. (3.3 kg/m ²)

ASTM F1303 CLASSIFICATION:

Type I, Grade 1, Class B, Commercial Use

CERTIFIED: FloorScore®

PHTHALATE FREE

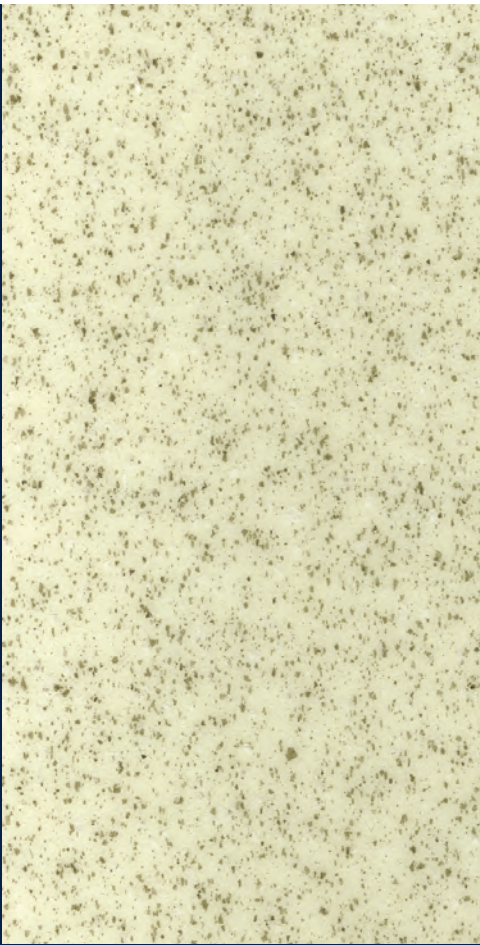
EXCLUSIVE LONSEAL® FORMULATIONS:

Topseal, GreenAir® & GreenMedic®

LEEDv4.1 CONTRIBUTION B+C INTERIORS:

Environmental Product Declarations Option 1
Sourcing of Raw Materials Option 2
Low-Emitting Materials

SMOOTH



LONSPECK® TOPSEAL is a traditional blend of contrasting colors that adds interest and dimension, while the speckling design helps masks daily wear and tear commercial flooring endures. In addition to black and gray, the specks appear against tan, beige and cream backgrounds, as well as “new neutrals” pale yellow and a shade of blue. A flexible option in commercial spaces including healthcare and education facilities. Lonspeck also features Lonseal’s exclusive Topseal formulation. See page 3 for more information on Topseal.

LONSPECK® Topseal

FEATURES (sizes shown are nominal)

- Roll Width: 6 ft. (1.8 m)
- Roll Length: 60 ft. (18.3 m)
- Overall Thickness: 0.080 in. (2.0 mm)
- Wear Layer Thickness: 0.028 in. (0.7 mm)
- Weight: 0.6 lbs./sq. ft. (3.1 kg/m²)

ASTM F1303 CLASSIFICATION:

Type I, Grade 1, Class B, Commercial Use

CERTIFIED: FloorScore®

EXCLUSIVE LONSEAL® FORMULATIONS:

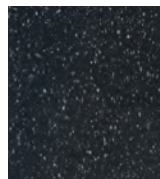
Topseal, GreenAir® & GreenMedic®

LEEDv4.1 CONTRIBUTION B+C INTERIORS:

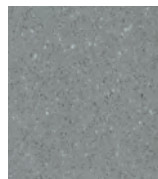
- Environmental Product Declarations Option 1
- Sourcing of Raw Materials Option 2
- Low-Emitting Materials



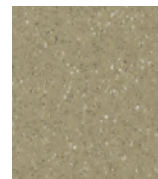
Lonspeck Topseal #SX112 Magnetic Gray and #SX117 Hale Navy - George Jackson Academy, New York City, NY (photo courtesy of Rise Projects LLC)



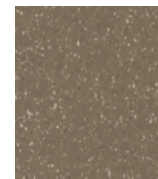
SX111
TWILIGHT ZONE



SX112
MAGNETIC GRAY



SX113
ROCKY BEACH



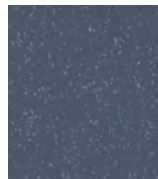
SX114
TAMARIND



SX115
SANDSTORM



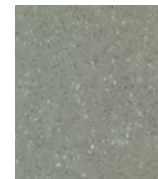
SX116
WHITE PEPPER



SX117
HALE NAVY



SX118
VANILLA BEAN



SX119
PIGEON GRAY

LONSTRAND TOPSEAL mimics a bark of a tree, which gives a harmonious relationship with the earth and offers a sense of healing and tranquility. The long, fibrous-like strands can visually expand a space. Lonstrand has multiple design purpose. It is subtle enough to provide a smooth transition between rooms and interesting enough to help emphasize a focal point. Lonstrand is PHTHALATE FREE and also features Lonseal's exclusive Topseal formulation. See page 3 for more information on Topseal.



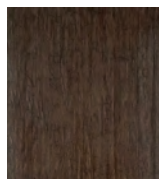
Lonstrand Topseal #SD257 Gray Wolf



SD251
TOASTED BAGEL



SD252
SPANISH CHESTNUT



SD253
COLOMBIAN ROAST



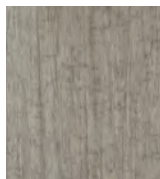
SD254
OILED TEAK



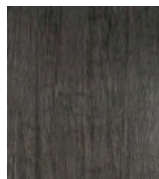
SD255
OLIVE BRANCH



SD256
WINTER TRAIL



SD257
GRAY WOLF



SD258
BLACK LAVA



SMOOTH

LONSTRAND Topseal

FEATURES (sizes shown are nominal)

Roll Width:	6 ft. (1.8 m)
Roll Length:	60 ft. (18.3 m)
Overall Thickness:	0.080 in. (2.0 mm)
Wear Layer Thickness:	0.020 in. (0.5 mm)
Weight:	0.7 lbs./sq. ft. (3.2 kg/m ²)

ASTM F1303 CLASSIFICATION:

Type I, Grade 1, Class B, Commercial Use

CERTIFIED: FloorScore®

PHTHALATE FREE

EXCLUSIVE LONSEAL® FORMULATIONS:

Topseal, GreenAir® & GreenMedic®

LEEDv4.1 CONTRIBUTION B+C INTERIORS:

Environmental Product Declarations Option 1
Sourcing of Raw Materials Option 2
Low-Emitting Materials

SMOOTH



LONWOOD® DAKOTA TOPSEAL is a slightly textured sheet that evokes the open grain of oak and the nuance of knot-free, quarter-sawn plank. Ideal for corporate, healthcare, retail and hospitality applications. Lonwood Dakota comes standard with Lonseal's exclusive Topseal formulation. See page 3 for more information on Topseal.

This product contains partial "boards" at both edges. This selvage should be removed to assure an aesthetically pleasing transition from sheet to sheet. The selvage width can vary depending on the lot.



Lonwood Dakota #W7093 Marshmallow and #W7077 Natural Oak
Prebys Cardiovascular Institute Scripps Memorial Hospital, La Jolla, CA (HOK Los Angeles)

LONWOOD® DAKOTA Topseal

FEATURES (sizes shown are nominal)

Roll Width: 6 ft. (1.8 m)
Roll Length: 60 ft. (18.3 m)
Overall Thickness: 0.080 in. (2.0 mm)
Wear Layer Thickness: 0.020 in. (0.5 mm)
Weight: 0.6 lbs./sq. ft. (3.1 kg/m²)

ASTM F1303 CLASSIFICATION:

Type I, Grade 1, Class B, Commercial Use

CERTIFIED: FloorScore®

EXCLUSIVE LONSEAL® FORMULATIONS:

Topseal, GreenAir® & GreenMedic®

LEEDv4.1 CONTRIBUTION B+C INTERIORS:

Environmental Product Declarations Option 1
Sourcing of Raw Materials Option 2
Low-Emitting Materials
Pre-Consumer (Post-Industrial) Recycled Content



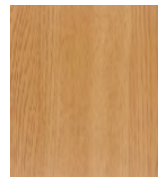
W7077
NATURAL OAK



W7078
AMBER



W7079
CHERRY



W7082
GOLDEN OAK



W7083
PLATINUM MIST



W7087
EBONY



W7088
PARLOR OAK



W7089
WARM TEA



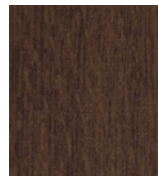
W7093
MARSHMALLOW



W7095
HONEY CAKES



W7096
PUMPKIN PIE

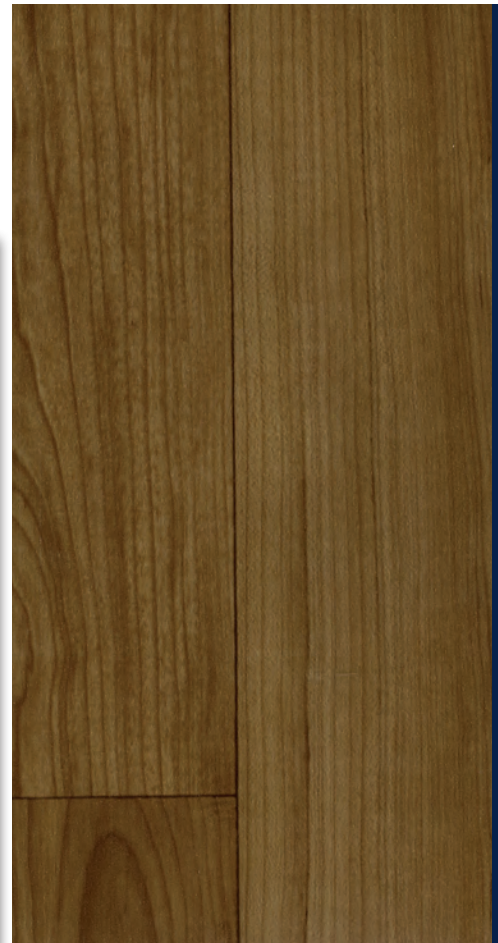


W7097
HOT CHOCOLATE

A wide-plank design, LONWOOD® MADERA TOPSEAL features detailed graining that weaves around beautifully-rendered knotting. This realistic look is further enhanced by articulated plank lines resulting in a design that suggests the strength of old-world craftsmanship paired with the crisp, clean lines of contemporary living. Madera's plank lengths are 32 in. and 16 in., with a plank width of 4.75± in. Lonwood Madera comes standard with Lonseal's exclusive Topseal formulation. See page 3 for more information on Topseal.



Lonwood Madera Topseal #W134 Brandy



SMOOTH

LONWOOD® MADERA Topseal

FEATURES (sizes shown are nominal)

Roll Width:	6 ft. (1.8 m)
Roll Length:	60 ft. (18.3 m)
Overall Thickness:	0.080 in. (2.0 mm)
Wear Layer Thickness:	0.020 in. (0.5 mm)
Weight:	0.6 lbs./sq. ft. (3.1 kg/m ²)

ASTM F1303 CLASSIFICATION:

Type I, Grade 1, Class B, Commercial Use

CERTIFIED: FloorScore®

EXCLUSIVE LONSEAL® FORMULATIONS:

Topseal, GreenAir® & GreenMedic®

LEEDv4.1 CONTRIBUTION B+C INTERIORS:

- Environmental Product Declarations Option 1
- Sourcing of Raw Materials Option 2
- Low-Emitting Materials
- Pre-Consumer (Post-Industrial) Recycled Content



W130
SHORTBREAD



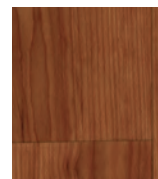
W131
PORTOBELLO



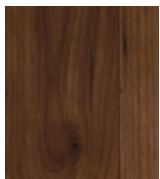
W132
OREGANO



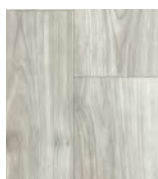
W133
CARAMEL



W134
BRANDY



W135
COCOA



W136
EARL GRAY

LONWOOD® NATURAL TOPSEAL pairs the timeless aesthetics of wood with the benefits of high-performance sheet vinyl in colors that range from earthy to quirky. Its soft grain patterning and smooth surface make Lonwood Natural ideal for those who want the warmth of wood with easier maintenance. Lonwood Natural comes standard with Lonseal's exclusive Topseal formulation. See page 3 for more information on Topseal.



Lonwood Natural #W7462 Gentle Wind - Texas Childrens Hospital, Houston, TX

LONWOOD® NATURAL Topseal

FEATURES *(sizes shown are nominal)*

Roll Width:	6 ft. (1.8 m)
Roll Length:	60 ft. (18.3 m)
Overall Thickness:	0.080 in. (2.0 mm)
Wear Layer Thickness:	0.020 in. (0.5 mm)
Weight:	0.6 lbs./sq. ft. (3.1 kg/m ²)

ASTM F1303 CLASSIFICATION:

Type I, Grade 1, Class B, Commercial Use

CERTIFIED: FloorScore®

EXCLUSIVE LONSEAL® FORMULATIONS:

Topseal, GreenAir® & GreenMedic®

LEEDv4.1 CONTRIBUTION B+C INTERIORS:

Environmental Product Declarations Option 1
Sourcing of Raw Materials Option 2
Low-Emitting Materials
Pre-Consumer (Post-Industrial) Recycled Content



W7452
MAPLE SYRUP



W7453
PRAIRIE



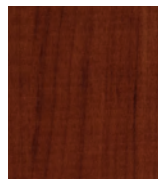
W7455
NUTSHELL



W7456
QUAIL EGGS



W7457
BUCKWHEAT



W7458
BRIAR ROOT



W7459
BARK DUST



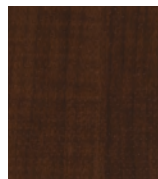
W7461
WHISPER



W7462
GENTLE WIND



W7463
THUNDERSTORM



W7464
SUMMER NIGHT



W7465
RAINFALL

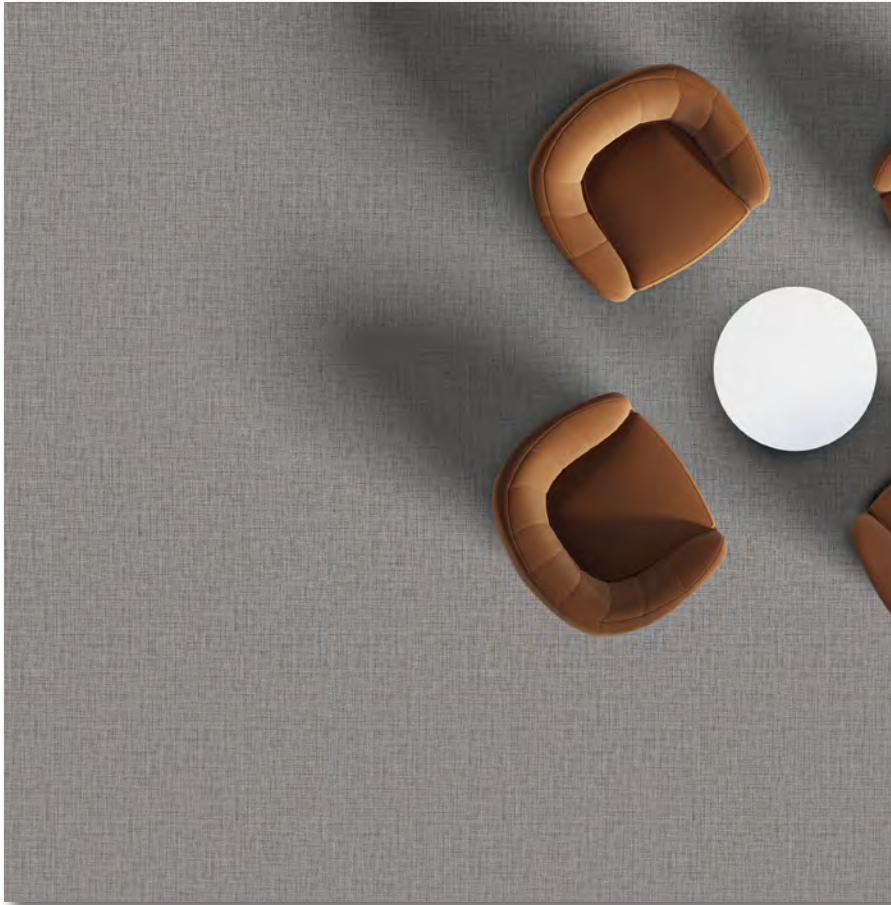


W7466
BABBLING CREEK



W7467
SINGING BIRDS

LONWOVEN TOPSEAL design offers a timeless and elegant aesthetic that combines the natural texture of linen with the durability and convenience of sheet vinyl. This meticulously crafted flooring pattern replicates the look and feel of woven linen fabric, infusing any space with sophistication. The subtle variations in color and texture create depth, resulting in visually captivating and inviting atmosphere. Plus, Lonseal's exclusive Topseal formulation ensures reduced scuffing, simplified maintenance, and extended lifespan. See page 3 for more information on Topseal.



Lonwoven Topseal WN611 Gray Suit



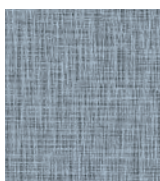
WN611
GRAY SUIT



WN612
COOKIE DOUGH



WN613
FRIAR'S BROWN



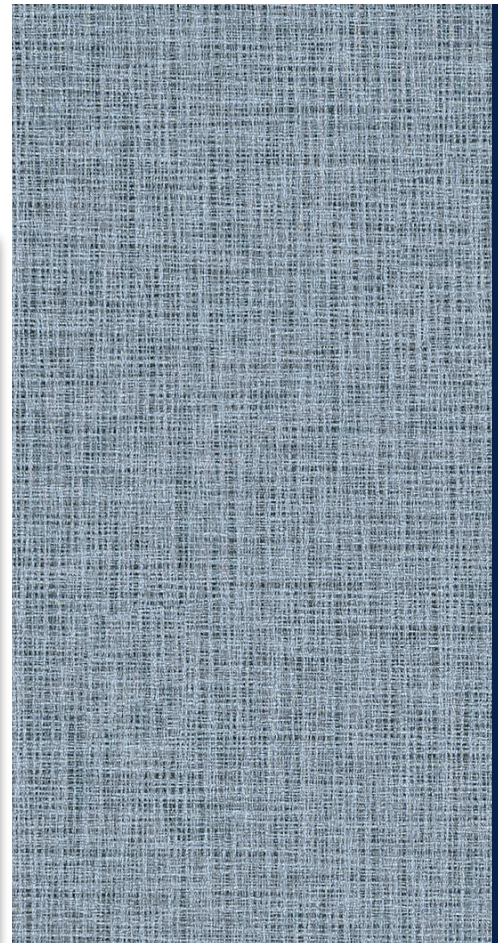
WN614
SKY HIGH



WN615
SAND DOLLAR



WN616
WARM MILK



SMOOTH

LONWOVEN Topseal

FEATURES (sizes shown are nominal)

Roll Width:	6 ft. (1.8 m)
Roll Length:	60 ft. (18.3 m)
Overall Thickness:	0.080 in. (2.0 mm)
Wear Layer Thickness:	0.020 in. (0.5 mm)
Weight:	0.6 lbs./sq. ft. (3.1 kg/m ²)

ASTM F1303 CLASSIFICATION:

Type I, Grade 1, Class B, Commercial Use

CERTIFIED: FloorScore®

PHTHALATE FREE

EXCLUSIVE LONSEAL® FORMULATIONS:

Topseal, GreenAir® & GreenMedic®

LEEDv4.1 CONTRIBUTION B+C INTERIORS:

Environmental Product Declarations Option 1
Sourcing of Raw Materials Option 2
Low-Emitting Materials

SMOOTH



LONZEBRA Topseal

FEATURES *(sizes shown are nominal)*

- Roll Width: 6 ft. (1.8 m)
- Roll Length: 60 ft. (18.3 m)
- Overall Thickness: 0.080 in. (2.0 mm)
- Wear Layer Thickness: 0.020 in. (0.5 mm)
- Weight: 0.6 lbs./sq. ft. (3.0 kg/m²)

ASTM F1303 CLASSIFICATION:
Type I, Grade 1, Class B, Commercial Use

CERTIFIED: FloorScore®

EXCLUSIVE LONSEAL® FORMULATIONS:
Topseal, GreenAir® & GreenMedic®

LEEDv4.1 CONTRIBUTION B+C INTERIORS:
Environmental Product Declarations Option 1
Sourcing of Raw Materials Option 2
Low-Emitting Materials
Pre-Consumer (Post-Industrial) Recycled Content

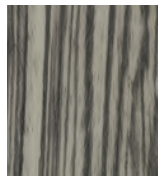
LONZEBRA TOPSEAL's striated linear pattern is not only visually extraordinary but also serves to mask dirt and other blemishes. The exotic colors and patterning are striking on their own but also have exciting pairing potential with other Lonzebra Topseal products. Lonzebra comes standard with Lonzebra's exclusive Topseal formulation. See page 3 for more information on Topseal.



Lonzebra Topseal #LZ7066 Bark - Child Development Center, 29 Palms, CA



LZ7059
FALCON



LZ7060
TWILIGHT



LZ7061
RAVEN



LZ7063
SAVANNA



LZ7066
BARK



LZ7068
AFRICAN SUNSET



LZ7069
SIENNA PLAINS

NOTE: Longer lead time may apply on all colors (except for LZ7066 Bark). Please speak with a Lonzebra Sales Representative for more information.

LONCOURT® I is specifically designed for interior sport facilities where outstanding resilience, durability and low maintenance are desired. It boasts sound-absorbing construction, simple installation and ease of maintenance, and is excellent for interior gymnasium, multi-purpose fitness room environments, commercial and institutional use. Loncourt I also meets all NCAA requirements for bounce, can hold up to the impact of retractable bleachers, and accepts painted game lines and graphics.



CT38
BUCKWHEAT



Loncourt I #CT38 Buckwheat - St. Marks School, Houston, TX

LONCOURT® UV pairs the durability and aesthetics of the original Loncourt flooring with a factory-applied urethane finish for easier maintenance. This reduces the lifetime cost of the floor by eliminating the need to reapply coats of finish over time.



CT838UV
BUCKWHEAT



Loncourt UV #CT838UV Buckwheat - Apartment Complex in Chicago, IL

LONCOURT® I

FEATURES (sizes shown are nominal)

Roll Width:	6 ft. (1.8 m)
Roll Length:	50 ft. (15.2 m)
Overall Thickness:	0.192 in. (4.8 mm)
Wear Layer Thickness	
for COURT1:	0.031 in. (0.8 mm)
for CT38:	0.020 in. (0.5 mm)
Weight:	1.6 lbs./sq. ft. (7.6 kg/m ²)

ASTM F1303 CLASSIFICATION:

Type I, Grade 1, Class B, Commercial Use

MEETS NCAA:

Basketball Rebound Requirements (49" - 54")

CERTIFIED: FloorScore®

EXCLUSIVE LONSEAL® FORMULATIONS:

GreenAir® & GreenMedic®

LEEDv4.1 CONTRIBUTION B+C INTERIORS:

- Environmental Product Declarations Option 1
- Sourcing of Raw Materials Option 2
- Low-Emitting Materials
- Pre-Consumer (Post-Industrial) Recycled Content

LONCOURT® UV

FEATURES (sizes shown are nominal)

Roll Width:	6 ft. (1.8 m)
Roll Length:	50 ft. (15.2 m)
Overall Thickness:	0.192 in. (4.8 mm)
Wear Layer Thickness:	0.020 in. (0.5 mm)
Weight:	1.6 lbs./sq. ft. (7.9 kg/m ²)

ASTM F1303 CLASSIFICATION:

Type I, Grade 1, Class B, Commercial Use

MEETS NCAA:

Basketball Rebound Requirements (49" - 54")

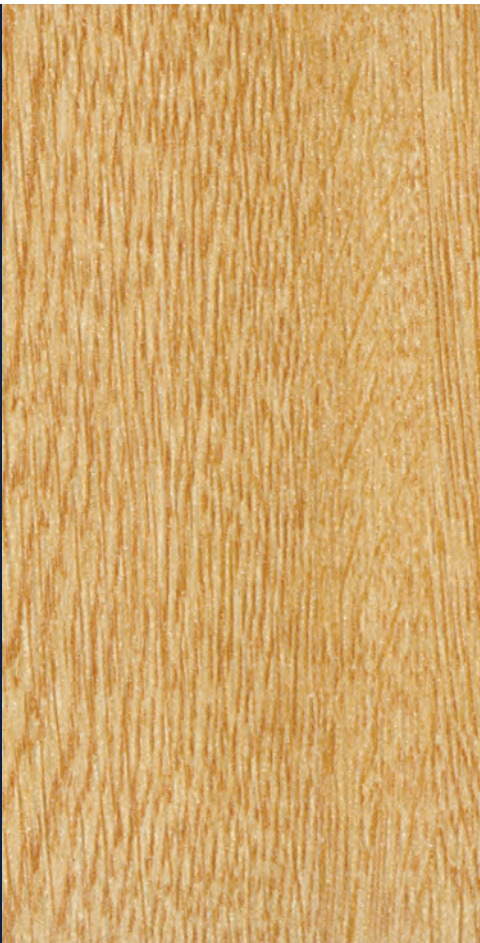
CERTIFIED: FloorScore®

EXCLUSIVE LONSEAL® FORMULATIONS:

GreenAir® & GreenMedic®

LEEDv4/4.1 CONTRIBUTION B+C INTERIORS:

- Environmental Product Declarations Option 1
- Sourcing of Raw Materials Option 2
- Low-Emitting Materials
- Pre-Consumer (Post-Industrial) Recycled Content



LONWOOD® PERFORMA features an anti-fatigue, cushioned-step, closed-cell foam-backing that is designed specifically for high-traffic and high-impact aerobic and fitness activities. A wood-grain sheet, it is ergonomically designed, sound absorbing and helps prevent injuries. Ideal for fitness, gym, and yoga (including hot yoga) applications.



Lonwood Performa #W553 Mocha Latte - Humble Haven Yoga, Richmond, VA

LONWOOD® PERFORMA

FEATURES (sizes shown are nominal)

- Roll Width: 6 ft. (1.8 m)
- Roll Length: 60 ft. (18.3 m)
- Overall Thickness: 0.220 in. (5.5 mm)
- Wear Layer Thickness: 0.020 in. (0.5 mm)
- Weight: 1.3 lbs./sq. ft. (6.2 kg/m²)

ASTM F1303 CLASSIFICATION:

Type I, Grade 1, Class C, Commercial Use

ASTM F2772 CLASSIFICATION:

Force Reduction Class 1

MEETS NCAA:

Basketball Rebound Requirements (49" - 54")

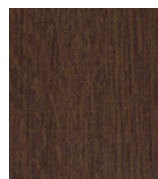
CERTIFIED: FloorScore®

EXCLUSIVE LONSEAL® FORMULATIONS:

GreenAir® & GreenMedic®

LEEDv4.1 CONTRIBUTION B+C INTERIORS:

- Environmental Product Declarations Option 1
- Sourcing of Raw Materials Option 2
- Low-Emitting Materials
- Pre-Consumer (Post-Industrial) Recycled Content



W547
SABLE



W549
SILVER LAKE



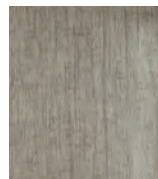
W550
BUCKWHEAT



W553
MOCHA LATTE



W556
SUMMER BREEZE



W557
MORNING FOG



W559
GOLDEN OAK

Ideal for fitness and gymnasium facilities, LONWOOD® WITH FOAM features an anti-fatigue, cushioned-step, closed-cell foam-backing that is well suited to high-traffic interiors. Lonwood with Foam features 10% recycled content.



Lonwood with Foam #W375 Foam Buckwheat - Texas Children's Hospital, Houston, TX



W375
FOAM BUCKWHEAT



W382
FOAM GOLDEN OAK



FITNESS

LONWOOD® WITH FOAM

FEATURES *(sizes shown are nominal)*

Roll Width:	6 ft. (1.8 m)
Roll Length:	60 ft. (18.3 m)
Overall Thickness:	0.120 in. (3.0 mm)
Wear Layer Thickness:	0.020 in. (0.5 mm)
Weight:	0.7 lbs./sq. ft. (3.6 kg/m ²)

ASTM F1303 CLASSIFICATION:

Type I, Grade 1, Class C, Commercial Use

MEETS NCAA:

Basketball Rebound Requirements (49" - 54")

CERTIFIED: FloorScore®

EXCLUSIVE LONSEAL® FORMULATIONS:

GreenAir® & GreenMedic®

LEEDv4 CONTRIBUTION B+C INTERIORS:

Environmental Product Declarations Option 1
Sourcing of Raw Materials Option 2
Low-Emitting Materials
Pre-Consumer (Post-Industrial) Recycled Content



Lonseal's LONDECK® series features resilient exterior sheet flooring with slightly embossed surfaces that withstand high volumes of pedestrian traffic and weather-wear. Due to its versatility, Londeck has been utilized in spaces such as pools, hotel and condo decks, and stairways. Though specifically designed for exterior spaces, the Londeck line is equally appropriate for interiors.

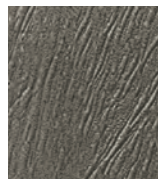


Londeck #D776 Dartmouth Gray

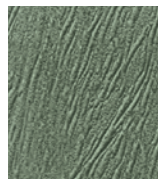
LONDECK®

FEATURES (sizes shown are nominal)

- Roll Width: 6 ft. (1.8 m)
- Roll Length: 60 ft. (18.3 m)
- Overall Thickness: 0.080 in. (2.0 mm)
- Wear Layer Thickness: 0.032 in. (0.8 mm)
- Weight: 0.6 lbs./sq. ft. (3.1 kg/m²)



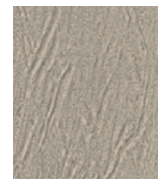
D750
TUDOR BROWN



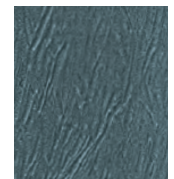
D752
FAIRMONT GREEN



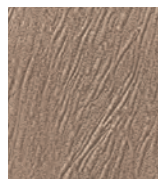
D753
KENSINGTON
BROWN



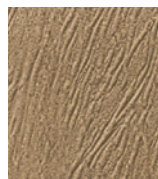
D754
PACIFIC SAND



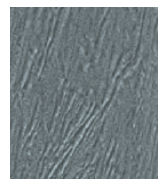
D758
PHILIPSBURG BLUE



D759
BRIARWOOD



D771
SHAKER BEIGE

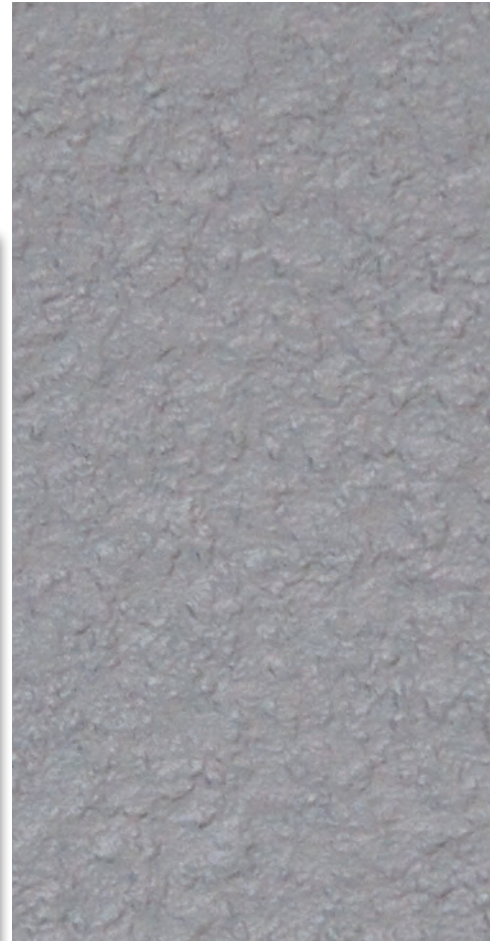


D776
DARTMOUTH GRAY

Mimicking the look of stucco with a slightly more subtle and crevassed surfacing than our regular Londeck offering, LONDECK® SIERRA is similarly water-resistant, weather-tolerant and holds up to heavy foot traffic.



Londeck Sierra #D721 Sierra Cliff Face - Crescent Condos, St. Louis, MO



EXTERIOR DECKING

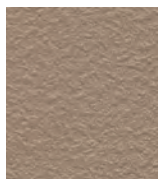
LONDECK® SIERRA

FEATURES *(sizes shown are nominal)*

Roll Width:	6 ft. (1.8 m) or 8.5 ft. (2.6 m)
Roll Length:	60 ft. (18.3 m) or 75 ft. (22.9 m)
Overall Thickness:	0.080 in. (2.0 mm)
Wear Layer Thickness:	0.032 in. (0.8 mm)
Weight:	0.6 lbs./sq. ft. (2.8 kg/m ²)



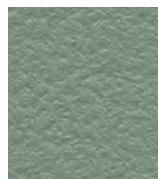
D721
SIERRA
CLIFF FACE*



D723
MOUNT TAN*



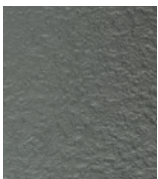
D725
SIERRA STONE



D726
FAIRMOUNT GREEN



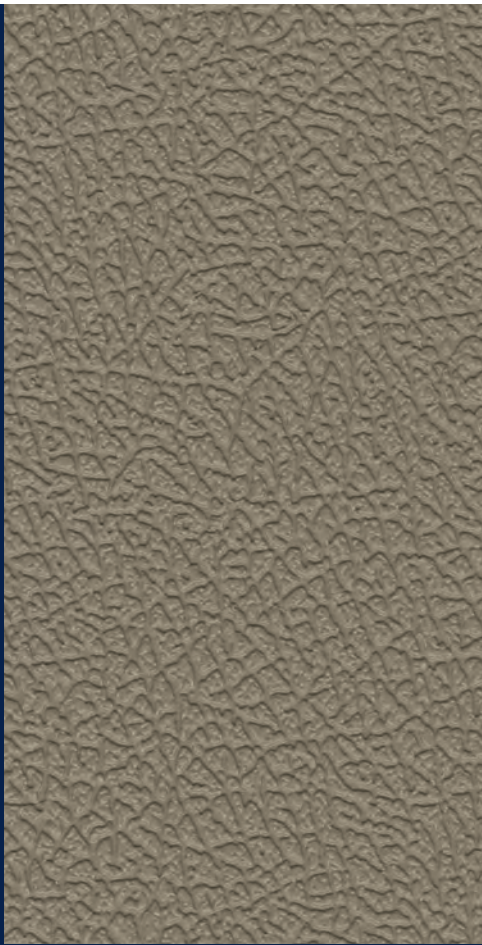
D727
PLATINUM



D729
TITANIUM

* Please note that #D721 Sierra Cliff Face and #D723 Mount Tan are available in both 6 ft. (1.83 m) and 8 ft. 6 in. (2.6 m) widths. The 8 ft. 6 in. (2.6 m) wide versions have up to 3 in. (7.6 cm) total selvage, leaving approximately 8 ft. 3 in. (2.5 m) of usable width. All other colors are available in 6 ft. (1.8 m) width only, unless custom ordered.

Note: Due to printing process limitations, printed colors may not match the actual product colors. If color match is critical, please request a sample at 800.832.7111 or 310.830.7111. For the most up-to-date color choices, go to LONSEAL.COM



As part of Lonseal's exterior flooring series, LONDECK® SOL is a resilient exterior sheet flooring with a COOLTOUCH technology that reflects the sun's rays and reduces the surface temperature up to 10°F (-12.22°C). Londeck Sol exhibits a leather grain pattern. It withstands high volumes of pedestrian traffic and weather-wear. Because of its versatility, Londeck Sol can be utilized in spaces such as pools, hotel and condo decks, boats and stairways. Roll Size: 8 ft. 6 in. (2.59 m) wide x 60 ft. (18.3 m).

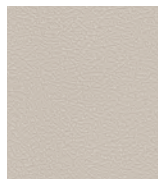
LONDECK® SOL

FEATURES *(sizes shown are nominal)*

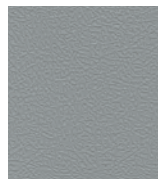
Roll Width:	8 ft. 6 in. (2.59 m)
Roll Length:	60 ft. (18.3 m)
Overall Thickness:	0.080 in. (2.0 mm)
Wear Layer Thickness:	0.032 in. (0.8 mm)
Weight:	0.6 lbs./sq. ft. (2.9 kg/m ²)



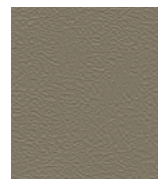
Londeck #D992 Overcast



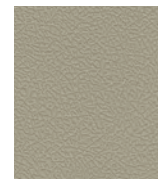
D991
CLAY DUST



D992
OVERCAST



D993
PURE EARTH



D994
DESERT KHAKI

** Please note that all Londeck Sol colors have a width of 8 ft. 6 in. (2.6 m), with up to 3 in. (7.6 cm) total selvage, leaving approximately 8 ft. 3 in. (2.5 m) of usable width.*

As an environmentally-conscious manufacturer, Lonseal provides the most functional, beautiful, sustainable, and high-performance products available.

Lonseal has been distributing resilient sheet flooring in the United States since 1972. Our flooring is among the most visually striking and distinctive in the market. Lonseal has a number of eco-friendly features such as a pre-applied urethane finish, Topseal. This finish reduces maintenance efforts. It also adds durability and product longevity that far exceeds most other flooring options.

The GreenAir® Collection is Lonseal's suite of low VOC and FloorScore® certified resilient sheet flooring products which support Indoor Air Quality (IAQ). Along with the exciting development of low VOC vinyl flooring, Lonseal is continuously exploring new methods and technologies to minimize impact on the environment.

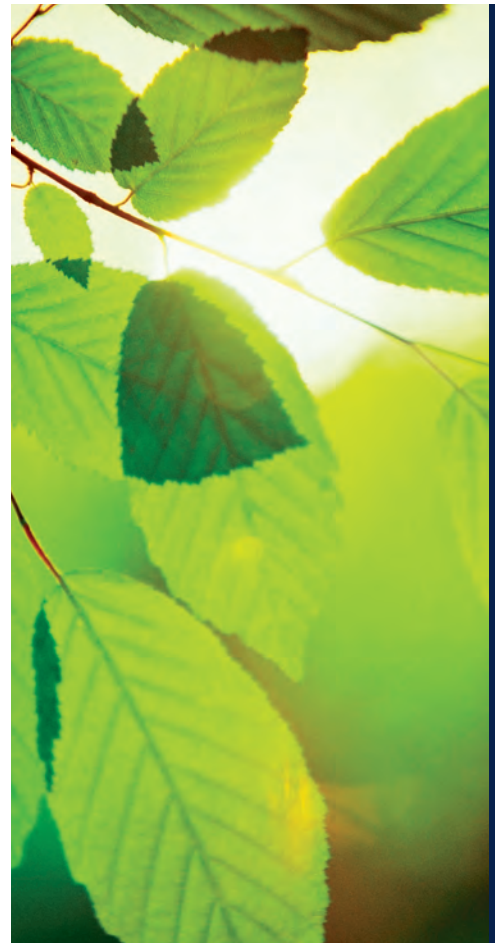
Among Lonseal's GreenVinyl features:

- Lonseal's interior flooring products contribute towards LEEDv4.1 Building Product Disclosure and Optimization:
 - **Environmental Product Declarations (Option 1)**. This qualifies our materials and sources with industry-wide EPD.
 - **Sourcing of Raw Materials (Option 2)**, which means our products meets the post-industrial recycled content that ranges from 10-20% (some Lonseal products exceed this requirement and fall within 25%-50%, such as the Loneco Topseal).
- All of our interior flooring products and our adhesive products have the **Indoor Environmental Quality Credit**. This credit shows that we met the General Emissions Evaluation and VOC content requirements.
- Lonseal obtains its flooring product from a facility that has certifications from the ISO (International Organization for Standardization): **ISO 9001 Quality Management Systems** and **ISO 14001 Environmental Management Systems**. ISO is a rigorous external third-party verification process that ensures Lonseal's compliance to its own internal standards and to ever-changing environmental laws and regulations.
- The GreenAir® Collection features products that are low VOC-emitting.
- Our GreenMedic® is a formulation to inhibit the growth of bacteria that may affect the flooring. *Please note that properties do not protect users or others against bacteria, viruses, germs, and other disease organisms.*
- We have FloorScore® certification from the Resilient Floor Covering Institute (RFCI) and **Scientific Certification Systems** which independently test and certify flooring products for compliance with indoor air quality emission requirements.
- Lonseal is a member of and meets the standards for the **Collaborative for High Performance Schools (CHPS)**. CHPS is a green building rating program especially designed for schools.

While resilient flooring manufacturers have made great progress in recent years, Lonseal is never satisfied with the status quo. We are always striving to raise the green bar with ever-more eco-friendly products with the development of our GreenVinyl formulations.

We have also greatly increased our use of recycled pre-consumer (post-industrial) content. We have also introduced a range of products with Topseal, a UV-cured, factory-applied, urethane-finish. Due to their low-maintenance and matte finish, products with Topseal reduce the use of chemicals from finishes and strippers.

There will always be more to come. Lonseal continues to explore new production technologies and formulation methods in order to create the most eco-friendly flooring options for commercial industries.



LONSEAL'S GREENVINYL STORY



BENEFITS OF LONSEAL® SHEET VINYL FLOORING

Lonseal specializes in resilient sheet vinyl flooring, with products available in a wide variety of colors, styles, and patterns. Its durability, practicality, and value have made it a popular choice in multiple types of applications for many decades.

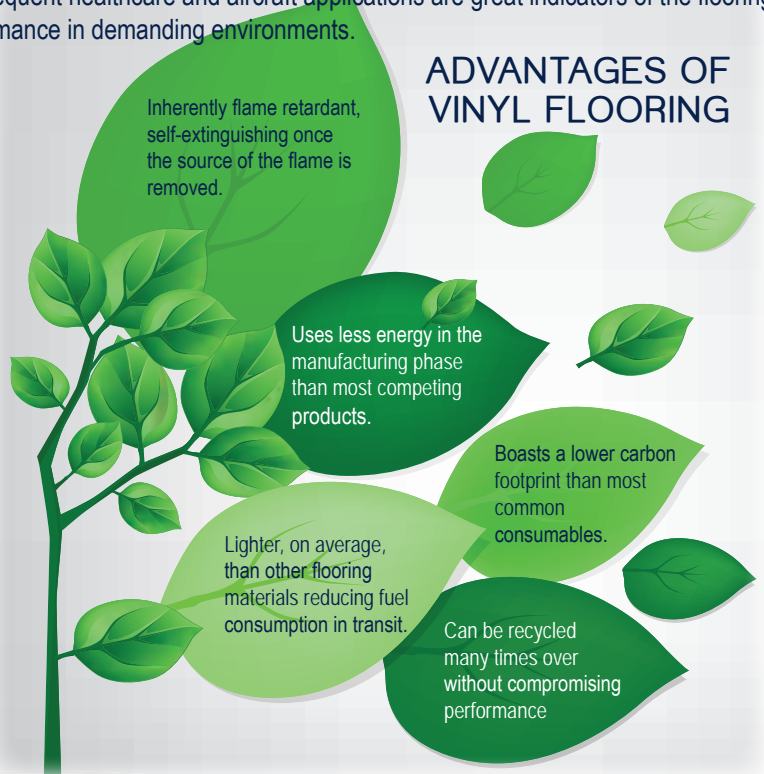
WHY VINYL? Vinyl is an extremely versatile component. When used in flooring products, specifically in sheet goods, it creates flexible yet durable flooring. Vinyl products offer several advantages, such as durability and low maintenance, which can contribute to their longevity and reduced need for replacement. When used responsibly and managed properly throughout their lifecycle, vinyl can be a practical choice for various applications. Its primary raw material is obtained from the nearly inexhaustible supply of sodium chloride (salt). Its manufacture has a smaller impact than other plastics, produces virtually no dioxins, and relies on fewer oil by-products than rubber. Vinyl is naturally fire retardant, highly recyclable, and products can be easily manufactured to meet strict indoor air quality (IAQ) requirements.

SUPERIOR SANITARY CONDITIONS Lonseal flooring is impermeable to moisture, which prevents it from penetrating to the substrate. This also means any contaminants contained within the moisture stay right on the surface for easier cleaning. Further, commercial installations with proper heat or chemically welded seams and flash coving at the walls helps ensure the install meets the strict sanitary requirements for healthcare or similar settings, eliminating places soiling and contamination are able to collect. For installations where flash coving is not possible, suitable sealants may be applied to prevent moisture intrusion at an installation's perimeter. Select products contain Lonseal's GreenMedic® formulation and a factory-applied urethane finish. When coupled with a suitable maintenance program for its application, your Lonseal flooring can be kept to the highest sanitary standards.

EXCEPTIONAL SURFACE PERFORMANCE While the calendaring method used to create Lonseal flooring allows for versatile designs, it also helps ensure consistency in performance. To improve slip resistance, a variety of textured or embossed surfaces are used, and select products include a factory-applied urethane finish. The layered construction also allows for great wear resistance. These features make our broad line of products suitable to many different applications.

RESILIENT AND DURABLE Lonseal flooring's softness and flexibility do not compromise its performance. It provides superb comfort underfoot, which is beneficial to those who spend a lot of time standing or walking. But it can also endure heavy loads and high traffic, recovering over time and demonstrating its resilience. The frequent healthcare and aircraft applications are great indicators of the flooring's performance in demanding environments.

ADVANTAGES OF VINYL FLOORING



Green Vinyl Products Contributing to LEEDv4.1 Building and Construction Interiors

Reviewed by SCS Global Services

Product	LEEDv4.1 Contribution towards Building Product Disclosure and Optimization: Environmental Product Declarations Option 1* (0.5 point)	LEEDv4.1 Contribution towards Building Product Disclosure and Optimization: Environmental Product Declarations Option 1* (1 point)	LEEDv4.1 Contribution towards Building Product Disclosure and Optimization: Sourcing of Raw Materials Option 2** (1 point)	LEEDv4.1 Contribution towards Low-Emitting Materials*** (3 points)	10%-20% Pre-Consumer (Post-Industrial) Recycled Content	FloorScore® CERTIFIED Indoor Air Quality Certified to SCS-EC10.2.2007	GREENAIR® (Low VOC's formulated)	GREENMEDIC® (Anti-microbial formulated to protect the flooring from degradation)
Lonbead®	✓	✓	✓	✓	✓	✓	✓	✓
Loncoin® I	✓	✓	✓	✓	✓	✓	✓	✓
Loncoin® II	✓	✓	✓	✓	✓	✓	✓	✓
Loncoin® II Flecks	✓	✓	✓	✓	✓	✓	✓	✓
Loncourt® I	✓	✓	✓	✓	✓	✓	✓	✓
Loncourt® UV	✓	✓	✓	✓	✓	✓	✓	✓
Loneco® Topseal	✓	✓	✓	✓	✓	✓	✓	✓
Loneco® Linen Topseal	✓	✓	✓	✓	✓	✓	✓	✓
Lonfloor® Galvanized Topseal	✓	✓	✓	✓	✓	✓	✓	✓
Lonfloor® Plain	✓	✓	✓	✓	✓	✓	✓	✓
Lonmetro® UV	✓	✓	✓	✓	✓	✓	✓	✓
Lonmoire® Topseal (Phthalate Free)	✓	✓	✓	✓	✓	✓	✓	✓
Lonpearl®	✓	✓	✓	✓	✓	✓	✓	✓
Lonplate® I	✓	✓	✓	✓	✓	✓	✓	✓
Lonplate® II	✓	✓	✓	✓	✓	✓	✓	✓
Lonplate® Max (Phthalate Free)	✓	✓	✓	✓	✓	✓	✓	✓
Lonplate® Patina	✓	✓	✓	✓	✓	✓	✓	✓
Lonpoint® Moonwalk	✓	✓	✓	✓	✓	✓	✓	✓
Lonspeck® Topseal	✓	✓	✓	✓	✓	✓	✓	✓
Lonstage® MT	✓	✓	✓	✓	✓	✓	✓	✓
Lonstage® UV	✓	✓	✓	✓	✓	✓	✓	✓
Lonstrand® Topseal (Phthalate Free)	✓	✓	✓	✓	✓	✓	✓	✓
Lonwood® Dakota Topseal	✓	✓	✓	✓	✓	✓	✓	✓
Lonwood® Madera Topseal	✓	✓	✓	✓	✓	✓	✓	✓
Lonwood® Natural Topseal	✓	✓	✓	✓	✓	✓	✓	✓
Lonwood® Performa	✓	✓	✓	✓	✓	✓	✓	✓
Lonwood® with Foam	✓	✓	✓	✓	10%	✓	✓	✓
Lonwood® Topseal (Phthalate Free)	✓	✓	✓	✓	10%	✓	✓	✓
Lonzebra Topseal	✓	✓	✓	✓	✓	✓	✓	✓
Lonseal Adhesive 650 (Green Label Plus)	✓	✓	✓	✓	✓	✓	✓	✓
Lonseal Adhesive 813 (Green Label Plus)	✓	✓	✓	✓	✓	✓	✓	✓

* Building Product Disclosure and Optimization: Environmental Product Declaration Option 1

- Materials and resources credit
- Qualified with industry-wide EPD

** Building Product Disclosure and Optimization: Sourcing of Raw Materials Option 2

- Materials and resources credit
- Qualified with recycled content in products (post-industrial recycled content in Lonseal products range from 10-20%)
- USGBC approved program

*** Low-emitting materials

- Indoor Environmental Quality Credit
- Qualified with FloorScore® certified flooring products and Green Label Plus® adhesives
- Qualified with adhesive products that are low in VOC and meet General Emissions Evaluation and VOC content requirements for wet applied products

About SCS Global Services: SCS has been providing global leadership in third-party environmental and sustainability verification, certification, auditing, testing, and standards development for over 30 years. The SCS Kingfisher certification mark appears on a wide range of products used in the green building and other industry sectors, and is recognized by government agencies, the design community, retailers, and leading green building rating schemes such as LEED, BREEAM, and more. SCS is a chartered benefit corporation, reflecting its commitment to socially and environmentally responsible business practices.





EXTERIOR DECKING



FIXTURES



DISPLAYS



ASSISTED LIVING



RETAIL

Printed documents are uncontrolled. Always refer to LONSEAL.com for the most current version of this document.

All technical information, including installation manuals, specifications, warranties and maintenance guidelines can be found at LONSEAL.com

For complimentary samples, please call 800.832.7111. Outside the U.S., call +1 310.830.7111

Lonseal, Inc.
928 East 238th Street
Carson, CA 90745 USA

LONSEAL.COM