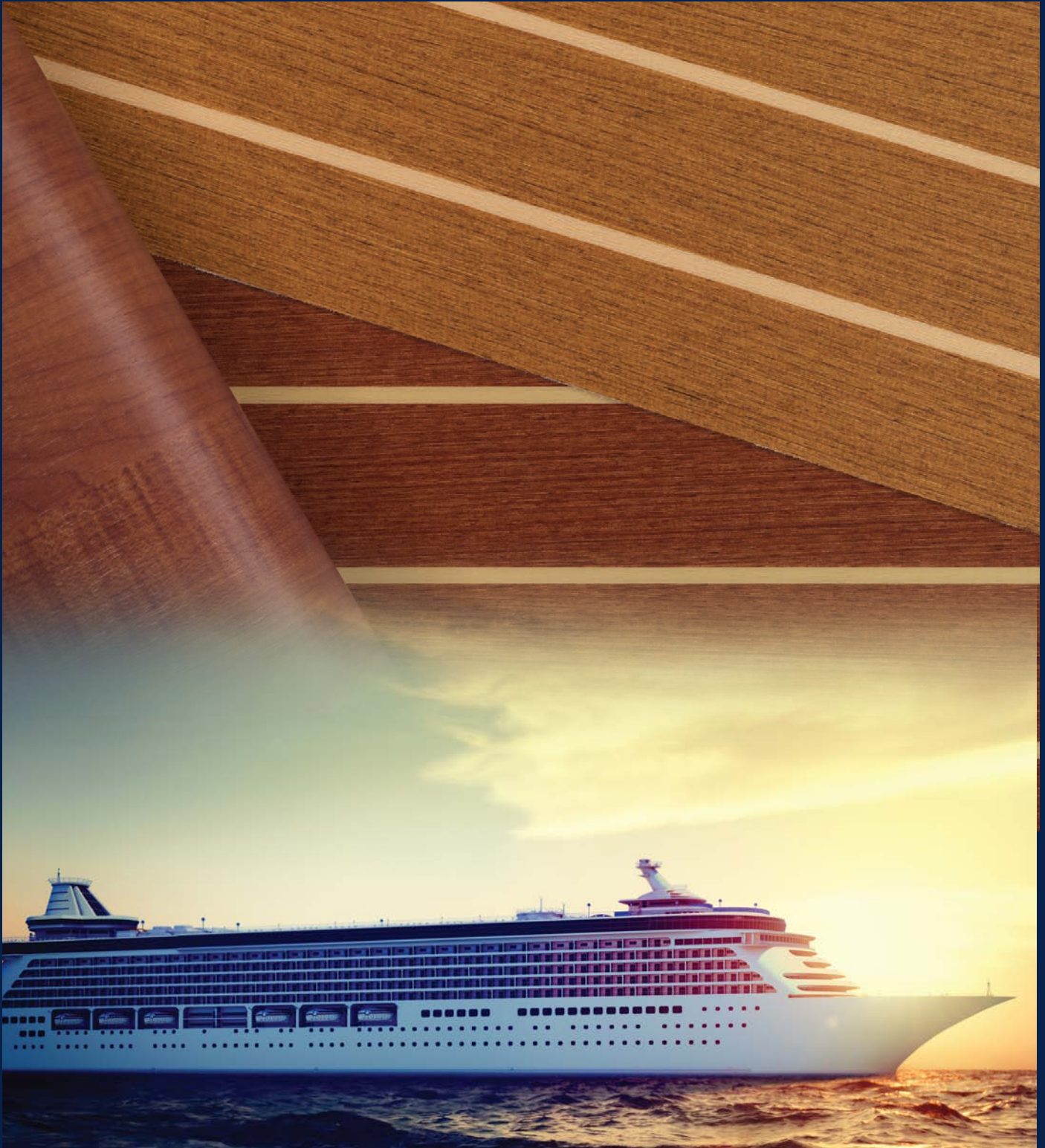




# LONSEAL<sup>®</sup>

MARINE FLOORING



**United States Coast Guard Certified  
MED 2014 / 90 / EU Modules B & D Compliant**

All technical information, including installation manuals, specifications, warranties and maintenance guidelines can be found at [Lonseal.com](http://Lonseal.com)

For complimentary samples, please call 800.832.7111  
Outside the U.S., call +1 310.830.7111  
or visit our website at [LONSEAL.COM](http://LONSEAL.COM)

Lonseal, Inc.  
928 E. 238th St. Carson, CA 90745 USA



# ABOUT LONSEAL® MARINE FLOORING

[Lonseal](#) has been a leader in the sheet vinyl flooring business for over 90 years, 50 of those have been dedicated towards the marine business, with the United States Navy as our first customer. Lonseal manufactures a wide variety of flooring choices ranging from smooth surfaces that mimic sealed concrete and wood visuals, to the textured variations of coin dots and diamond plate.

Our marine line features include:

- 6' and 8' widths available ([Loncoin II](#) and [Lonplate II](#) custom option styles).
- Flexible construction, flash coving and select vertical surface applications.
- Matching welding thread.
- Durable commercial wear-layer that stands up to years of usage in marine environments.
- Mixture of interior and semi-exterior marine product lines.
- Custom patterns and colors available with a minimum order requirement.
- Coordinating [Trims](#) available for [Lonmarine® Wood](#) that can be used for access panels and stair nosing.
- Lonmarine® Wood, [Lonmarine® Stone](#) & [Loncommodore®](#).
  - IMO compliance for international markets (MED-Approved Flooring per IMO-SOLAS Requirements).
  - USCG certified.

### Custom Options

Lonseal has additional design options for LONMARINE and LONCOMMODORE that are approved for MED/USCG. These options will be strictly processed as custom orders and will not be treated as regular stocked inventory.



## LONMARINE® STONE

LONMARINE® STONE consists of a lightly dappled palette of neutral and gray tones that makes it a perfect fit for interior and semi-exterior spaces of both pleasure boats and hard-working industrial craft. The elegant marbled pattern helps mask routine scuffing that can occur with heavy foot traffic.

FEATURES (data shown is nominal):

- Roll Width: 6 ft. (1.8 m)
- Roll Length: 60 ft. (18.3 m)
- Overall Thickness: 0.080 in. (2.0 mm)
- Wear Layer Thickness: 0.020 in. (0.5 mm)
- Weight: 0.7 lbs./sq. ft. (3.3 kg/m<sup>2</sup>)

EU REACH COMPLIANT FORMULATION:  
Phthalate free, SVHC free

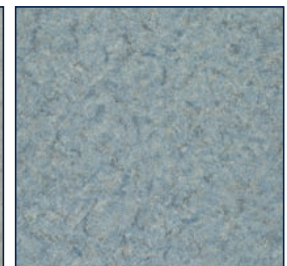
MEETS FMVS 302:  
Flammability of  
Interior Materials



MS10  
Dorato



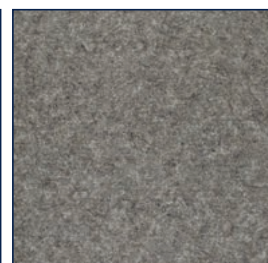
MS11  
Grigio



MS12  
Mare



MS13  
Noce



MS14  
Carbone



MS15  
Russo

# LONMARINE® WOOD

LONMARINE® WOOD is Lonseal's high-performance, slip-resistant marine safety flooring that has been specifically manufactured to comply with IMO/MED specifications for international markets and is USCG approved and can be installed in interior and exterior spaces.

**FEATURES** (data shown is nominal):

- Roll Width: 6 ft. (1.8 m)
- Roll Length: 60 ft. (18.3 m)
- Overall Thickness: 0.080 in. (2.0 mm)
- Wear Layer Thickness: 0.020 in. (0.5 mm)
- Weight: 0.7 lbs./sq. ft. (3.4 kg/m<sup>2</sup>)

**EU REACH COMPLIANT FORMULATION:**

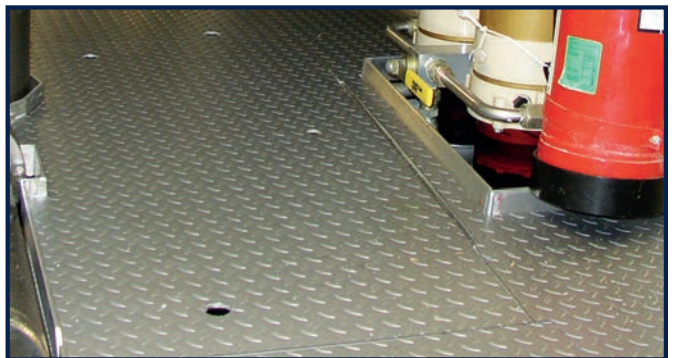
Phthalate free, SVHC free

**MEETS FMVS 302:**  
Flammability of Interior Materials



# LONCOMMODORE®

Offering the rugged endurance of classic steel plating, LONCOMMODORE® is Lonseal's toughest and most durable resilient, skid-resistant sheet vinyl flooring. Perfect for heavy-duty applications in all kinds of nautical spaces.



**FEATURES** (data shown is nominal):

- Roll Width: 6 ft. (1.8 m)
- Roll Length: 60 ft. (18.3 m)
- Overall Thickness: 0.140 in. (3.5 mm)
- Wear Layer Thickness: 0.060 in. (1.5 mm)
- Weight: 0.8 lbs./sq. ft. (3.9 kg/m<sup>2</sup>)

**EU REACH COMPLIANT FORMULATION:**

Phthalate free, SVHC free



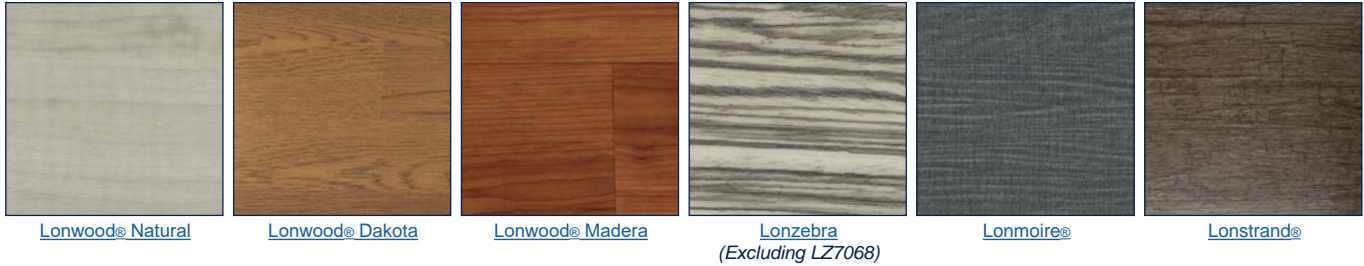


Custom orders will inherit the names under the approved MED/USCG product line, and will be grouped under the LONMARINE and LONCOMMODORE product name.

Depending on the options selected, advance paperwork for certification may need to be submitted. Please contact Lonseal for the availability of made-to-order MED/USCG custom products and lead times.

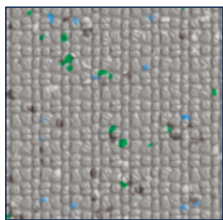
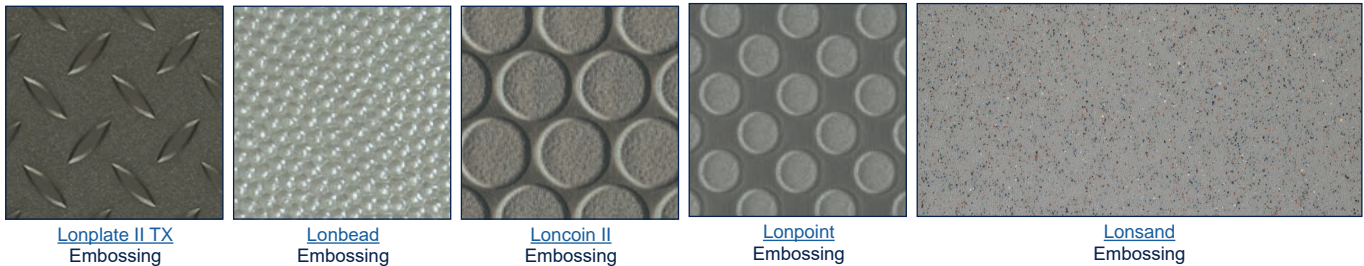
## LONMARINE® CUSTOM OPTIONS

Lonmarine, including custom products, will not be manufactured with the factory applied urethane Topseal finish. The following designs can be used for LONMARINE custom orders. Please note that due to MED/USCG formulation; the below-listed products will have a slightly different color tone than the current non-IMO version. In addition, Lonmarine custom products are meant for interior applications ONLY.



## LONCOMMODORE® CUSTOM OPTIONS

The following are embossing pattern options which can be used for LONCOMMODORE custom orders. LONCOMMODORE has limited color options:



Restarea embossing (Lonseal Corp.- Japan, product line)  
Note: flecking is not an option and only limited solid colors are available.

## LONMARINE® TRIMS

6 ft. long and pre-drilled every 5"  
*(not MED/USCG certified)*

