

LONSEAL[®]

FLOORING

LONPLATE[®] MAX

LONPLATE MAX is a rugged, commercial-grade vinyl flooring designed specifically for vehicles, featuring a unique double diamond pattern. The Lonplate series infuses an industrial look into any vehicle interior. Designed to withstand the rigors of daily use, our innovative textured surface design, coupled with our durable wear layer helps to conceal scratches and stains, ensuring lasting quality and enhancing traction.

FEATURES *(data shown is nominal):*

- Roll Width: 6 ft. (1.8 m)
- Roll Length: 60 ft. (18.3 m)
- Overall Thickness: 0.120 in. (3.0 mm)
- Wear Layer Thickness: 0.40 in. (1.0 mm)
- Weight: 0.7 lbs./sq. ft. (3.4 kg/m²)

PHTHALATE FREE:

REACH Compliant, SVHC free

MEETS FMVSS 302:

CFR 49 §571.302 Flammability of Interior Materials

ASTM F1303 CLASSIFICATION:

Type I, Grade 1, Class B, Commercial Use

CERTIFIED:

FloorScore[®]

EXCLUSIVE LONSEAL FORMULATIONS:

GreenAir[®] & GreenMedic[®]

LEEDv4.1 CONTRIBUTION B & C Interiors:

- Environmental Product Declarations Option 1
- Sourcing of Raw Materials Option 2
- Low-Emitting Materials

⚠ WARNING: Cancer and Reproductive Harm-
www.P65Warnings.ca.gov

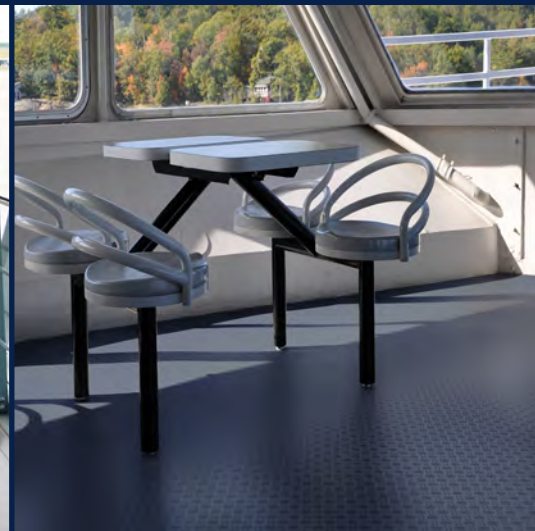
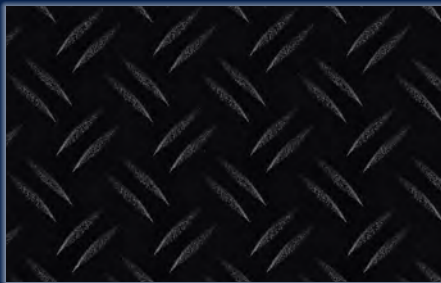




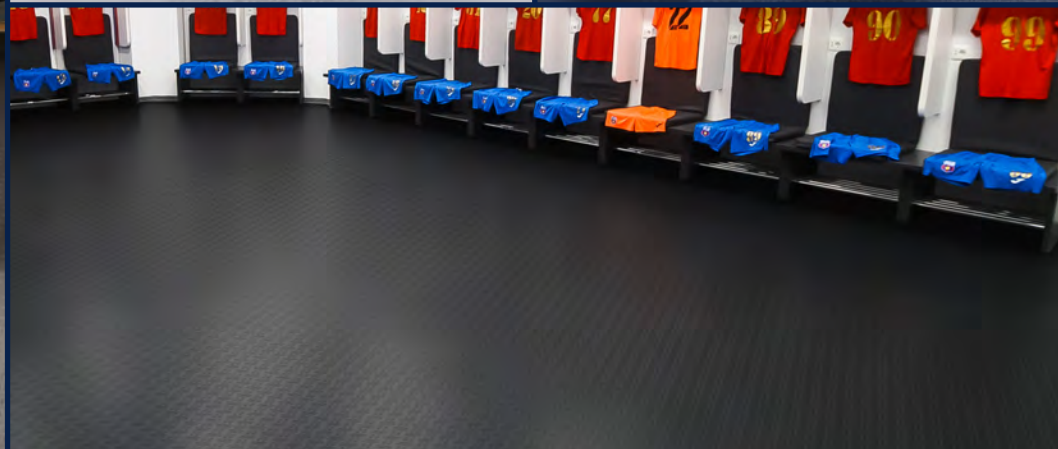
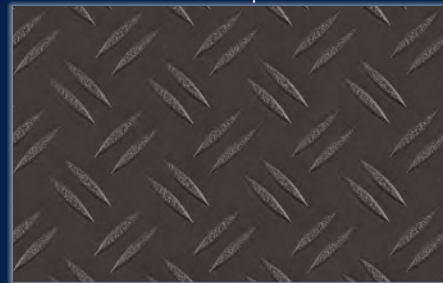
PX281
Shining Armor



PX282
Black Anvil



PX283
Dark Sepia



PX284
Deep Sea

