

LONSEAL[®]

FLOORING

LONWOOD[®]

PERFORMA

Endurance, Multi-Purpose Fitness Flooring

LONWOOD PERFORMA features an anti-fatigue, cushioned-step, closed-cell foam-backing that is designed specifically for high-traffic and high-impact aerobic and fitness activities. A wood-grain sheet, it is ergonomically designed, sound absorbing and helps prevent injuries. Ideal for fitness, gym, and yoga (including hot yoga) applications.

FEATURES *(data shown is nominal):*

Roll Width: 6 ft. (1.8 m)
Roll Length: 60 ft. (18.3 m)
Overall Thickness: 0.22 in. (5.5 mm)
Wear Layer Thickness: 0.02 in. (0.5 mm)
Weight: 1.3 lbs./sq. ft. (6.2 kg/m²)

MEETS NCAA:

Basketball Rebound Requirements (49" - 54")

ASTM F1303 CLASSIFICATION:

Type I, Grade 1, Class C, Commercial Use

ASTM F2772 CLASSIFICATION:

Force Reduction Class 1

CERTIFIED:

FloorScore[®]

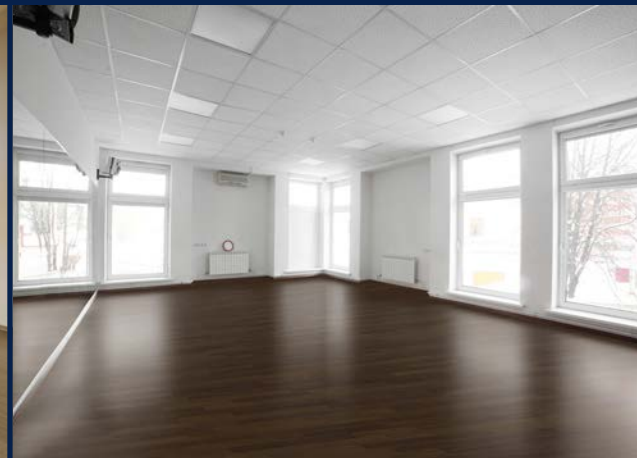
EXCLUSIVE LONSEAL FORMULATIONS:

GreenAir[®] & GreenMedic[®]

LEEDv4/4.1 CONTRIBUTION B & C Interiors:

Environmental Product Declarations Option 1
Sourcing of Raw Materials Option 2
Low-Emitting Materials
Pre-Consumer (Post-Industrial) Recycled Content



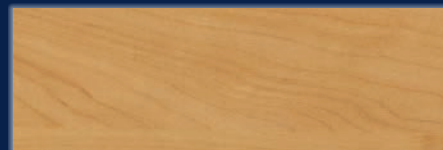
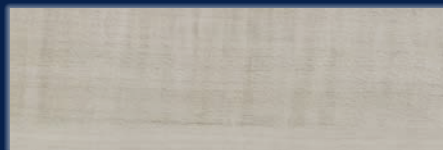


W547
Sable

W549
Silver Lake

W550
Buckwheat

W553
Mocha Latte



W556
Summer Breeze

W557
Morning Fog

W558
Honey Vanilla

W559
Golden Oak

