

# LONSEAL<sup>®</sup>

## FLOORING

### LONPOINT<sup>®</sup> MOONWALK

*Unique, Fashionable Coin Pattern*

LONPOINT MOONWALK is similar to our Loncoin series, but is distinguished by smaller (half-inch diameter) and more widely-spaced coin stamping. The slip-resistance feature makes it ideal for busy traffic areas like break rooms and hallways while the intriguing color scheme adds a distinctive designer touch.

#### FEATURES *(data shown is nominal):*

Roll Width: 6 ft. (1.8 m)  
Roll Length: 60 ft. (18.3 m)  
Overall Thickness: 0.080 in. (2.0 mm)  
Wear Layer Thickness: 0.032 in. (0.8 mm)  
Weight: 0.7 lbs./sq. ft. (3.3 kg/m<sup>2</sup>)

#### MEETS FMVSS 302:

CFR 49 §571.302 Flammability of Interior Materials

#### ASTM F1303 CLASSIFICATION:

Type I, Grade 1, Class B, Commercial Use

#### CERTIFIED:

FloorScore<sup>®</sup>

#### EXCLUSIVE LONSEAL FORMULATIONS:

GreenAir<sup>®</sup> & GreenMedic<sup>®</sup>

#### LEEDv4/4.1 CONTRIBUTION B & C Interiors:

Environmental Product Declarations Option 1  
Sourcing of Raw Materials Option 2  
Low-Emitting Materials  
Pre-Consumer (Post-Industrial) Recycled Content

*\* #P352 Sapphire and #P354 Graphite are iridescent in color, shifting from gray to blue as the angle of the view changes. Please request a sample swatch for color accuracy.*

**⚠ WARNING:** Cancer and Reproductive Harm-  
[www.P65Warnings.ca.gov](http://www.P65Warnings.ca.gov)





P345  
Blue

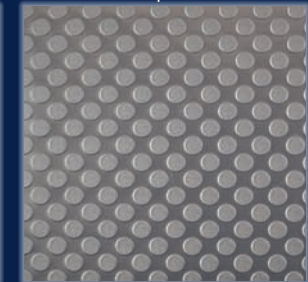
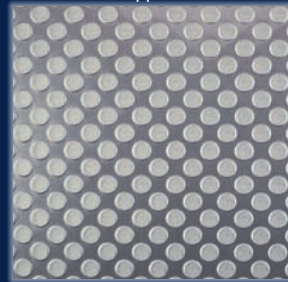
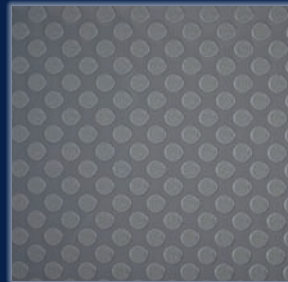
P348  
Slate

P351  
Platinum

P352  
Sapphire\*

P353  
Black

P354  
Graphite\*



LONSEAL, INC.

928 E. 238<sup>TH</sup> STREET, CARSON, CA, 90745

310.830.7111

WWW.LONSEAL.COM

Printing limitations may not represent the true color of the product. If color match is critical, please call us to request a sample. For the most up-to-date color choices, go to LONSEAL.COM.