

LONPEARL

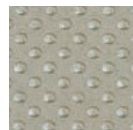
The studded embossing and deeply saturated colors of LONPEARL offer a stylishly textured surface with excellent camouflaging capabilities. Perfect for high-traffic retail areas as well as corporate spaces in search of a dynamic statement.

** Due to the light color of #P714 Arctic White, more frequent maintenance procedures are necessary to ensure a long lasting installation. In addition, areas of prolonged UV exposure should be avoided to prevent unwanted discoloration of the flooring.*

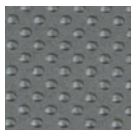


EMBOSSED LONPEARL

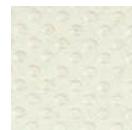
Lonpearl #P713 Baleen Gray



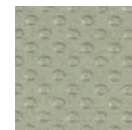
P712
CASPIAN MIST



P713
BALEEN GRAY



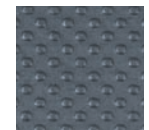
P714
ARCTIC WHITE*



P715
ABALONE GREEN



P716
MARLIN SILVER



P717
ORCA BLUE



P718
ODESSA BLACK

FEATURES (sizes shown are nominal)

Roll Width: 6 ft. (1.8 m)
 Roll Length: 60 ft. (18.3 m)
 Overall Thickness: 0.100 in. (2.5 mm)
 Wear Layer Thickness: 0.031 in. (0.8 mm)
 Weight: 0.9 lbs./sq. ft., 310 lbs./roll

ASTM F1303 CLASSIFICATION:
 Type I, Grade 1, Class B, Commercial Use

CERTIFIED: FloorScore®

EXCLUSIVE LONSEAL® FORMULATIONS:
 GreenAir® & GreenMedic®

LEEDv4 CONTRIBUTION B+C INTERIORS:
 Environmental Product Declarations Option 1
 Sourcing of Raw Materials Option 2
 Low-Emitting Materials
 20%-40% Post-Industrial Recycled Content