

# LONSEAL<sup>®</sup>

## FLOORING

## LONPOINT MOONWALK

*Unique, Fashionable Coin Pattern*

LONPOINT MOONWALK is similar to our Loncoin series, but is distinguished by smaller (half-inch diameter) and more widely-spaced coin stamping. The slip-resistance feature makes it ideal for busy traffic areas like break rooms and hallways while the intriguing color scheme adds a distinctive designer touch.

### FEATURES *(data shown is nominal):*

- Roll Width: 6 ft. (1.8 m)
- Roll Length: 60 ft. (18.3 m)
- Overall Thickness: 0.080 in. (2.0 mm)
- Wear Layer Thickness: 0.031 in. (0.8 mm)
- Weight: 0.7 lbs./sq. ft., 240 lbs./roll

### ASTM F1303 CLASSIFICATION:

- Type I, Grade 1, Class B, Commercial Use

### CERTIFIED:

- FloorScore<sup>®</sup>

### EXCLUSIVE LONSEAL<sup>®</sup> FORMULATIONS:

- GreenAir<sup>®</sup> & GreenMedic<sup>®</sup>

### LEEDv4 CONTRIBUTION Building & Construction Interiors:

- Environmental Product Declarations Option 1
- Sourcing of Raw Materials Option 2
- Low-Emitting Materials
- 20% - 40% Post-Industrial Recycled Content

*\* #352 Sapphire and #354 Graphite are iridescent in color, shifting from gray to blue as the angle of the view changes. Please request a sample swatch for color accuracy.*



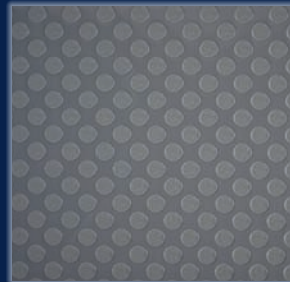




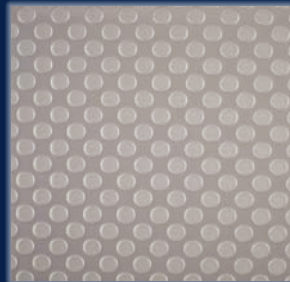
Product #: P345  
Color # Name: 345 Blue



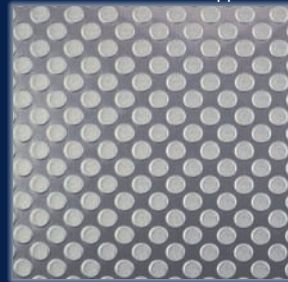
Product #: P348  
Color # Name: 348 Slate



Product #: P351  
Color # Name: 351 Platinum



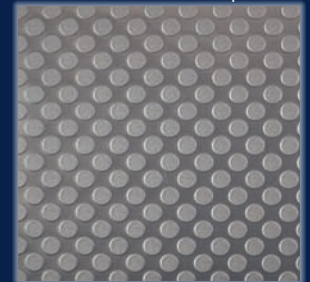
Product #: P352  
Color # Name: 352 Sapphire\*



Product #: P353  
Color # Name: 353 Black



Product #: P354  
Color # Name: 354 Graphite\*



LONSEAL, INC.

928 E. 238<sup>TH</sup> STREET, CARSON, CA, 90745

310.830.7111

WWW.LONSEAL.COM

Printing limitations may not represent the true color of the product. If color match is critical, please call us to request a sample. For the most up-to-date color choices, go to LONSEAL.COM.