

LONSEAL[®]

FLOORING

LONFLOOR GALVANIZED Topseal

Industrial Pearlescent with Clean Lines

Lonfloor Galvanized with Topseal lends a striking industrial touch to any interior, from office break rooms to retail spaces. The subtle color choices offer warmth while the metallic design gives a polished, sophisticated appeal. Lonseal's exclusive Topseal formulation is a factory-applied urethane finish that protects the floor, reduces scuffing and simplifies routine maintenance.

FEATURES *(data shown is nominal):*

Roll Width: 6 ft. (1.8 m)
Roll Length: 60 ft. (18.3 m)
Overall Thickness: 0.080 in. (2.0 mm)
Wear Layer Thickness: 0.031 in. (0.8 mm)
Weight: 0.6 lbs./sq. ft., 220 lbs./roll

ASTM F1303 CLASSIFICATION:

Type I, Grade 1, Class B, Commercial Use

CERTIFIED:

FloorScore®

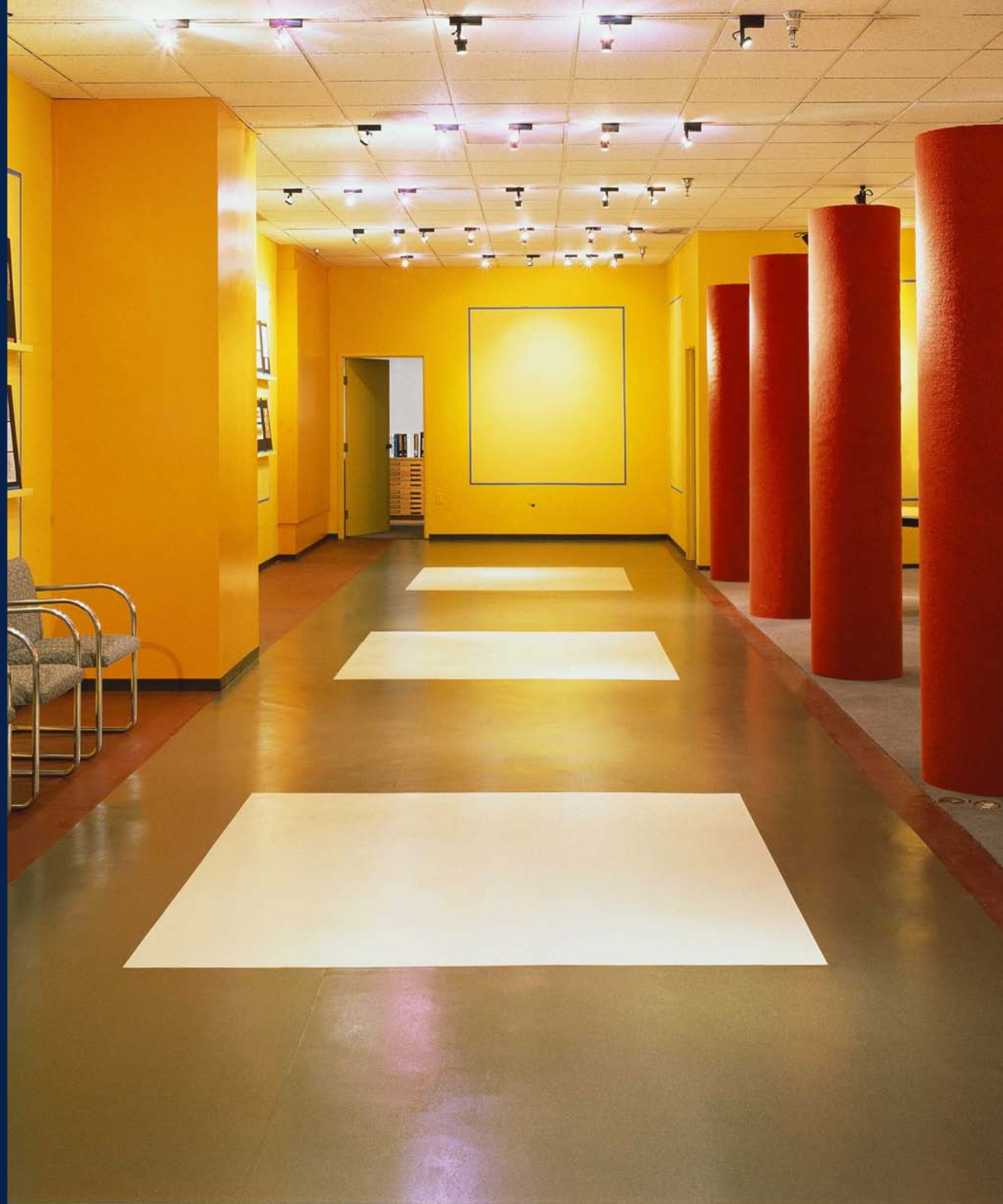
EXCLUSIVE LONSEAL® FORMULATIONS:

GreenAir® & GreenMedic®

LEEDv4 CONTRIBUTION Building & Construction Interiors:

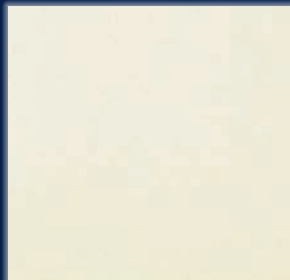
Environmental Product Declarations Option 1
Sourcing of Raw Materials Option 2
Low-Emitting Materials
20% - 40% Post-Industrial Recycled Content

** Due to the light color of #7240 White Diamond, more frequent maintenance procedures are necessary to ensure a long lasting installation. In addition, areas of prolonged UV exposure should be avoided to prevent unwanted discoloration of the flooring.*

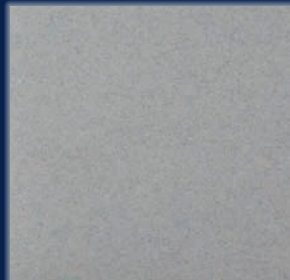




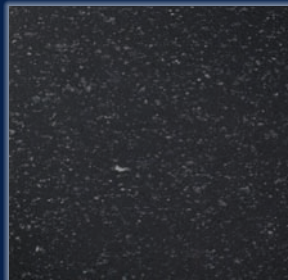
Product #: F7240
Color # Name: 7240 White Diamond*



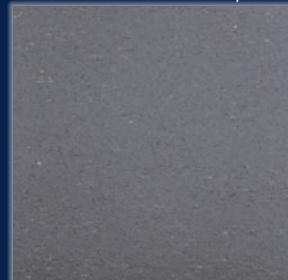
Product #: F7241
Color # Name: 7241 Platinum



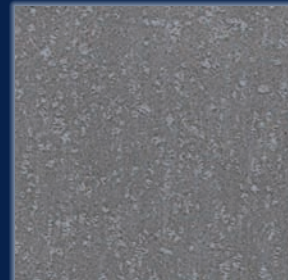
Product #: F7243
Color # Name: 7243 Black Pearl



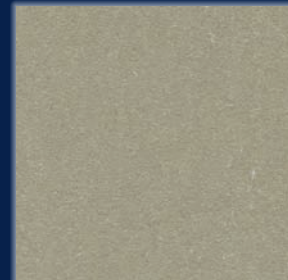
Product #: F7244
Color # Name: 7244 Graphite



Product #: F7247
Color # Name: 7247 Granite



Product #: F7264
Color # Name: 7264 Brass



LONSEAL, INC.

928 E. 238TH STREET, CARSON, CA, 90745

310.830.7111

WWW.LONSEAL.COM

Printing limitations may not represent the true color of the product. If color match is critical, please call us to request a sample. For the most up-to-date color choices, go to LONSEAL.COM.