

LONSEAL[®]

FLOORING

LONCOMPASS

Axis Aircraft Collection

Axis is an embossed product collection featuring differently scaled coin-stampings that provide a variety of choice in terms of color and design options as well as outstanding traction which aids in reducing the risk of slipping.

The wider coin spacing pattern and bolder colors of LONCOMPASS makes it an eye-catching option for both large and small spaces.

MEETS FAA REQUIREMENTS:

FAR 25.853(a): 12-Second Vertical Flammability

FAR 25.793: Factor of Sliding Friction

FEATURES *(data shown is nominal):*

Roll Width: 6 ft. (1.8 m)

Roll Length: 60 ft. (18.3 m)

Overall Thickness: 0.091 in. (2.3 mm)

Wear Layer Thickness: 0.031 in. (0.8 mm)

Weight: 88 oz./sq. yd. (2984 g/m²), 220 lbs./roll

EXCLUSIVE LONSEAL[®] FORMULATIONS:

GreenAir[®] & GreenMedic[®]

** 9352 Denim is an iridescent color shifting from gray to blue as the angle of view changes. Please request a sample swatch for color accuracy.*

AXIS COLLECTION

Loncoin II
Featherweight

Lonpolaris

Loncompass

Lonequator

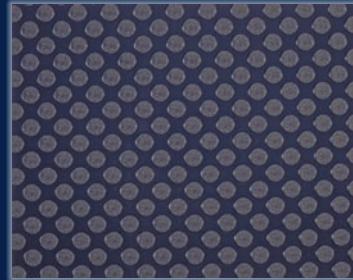
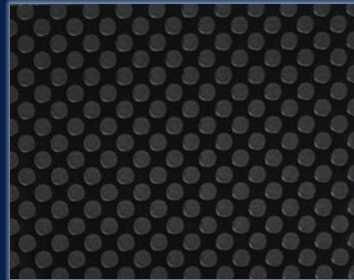
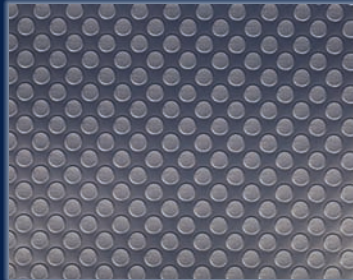
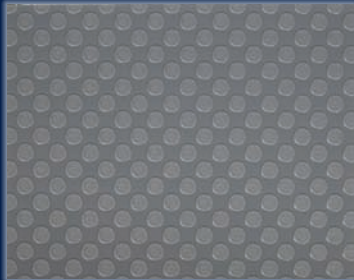
Product #: CPF9347M72
Color # Name: 9347 Camel

Product #: CPF9348M72
Color # Name: 9348 Graystone

Product #: CPF9352M72
Color # Name: 9352 Denim

Product #: CPF9353M72
Color # Name: 9353 Asphalt

Product #: CPF9395M72
Color # Name: 9395 Yale Blue



LONSEAL, INC.

928 E. 238TH STREET, CARSON, CA, 90745

310.830.7111

WWW.LONSEAL.COM

Printing limitations may not represent the true color of the product. If color match is critical, please call us to request a sample. For the most up-to-date color choices, go to LONSEAL.COM.