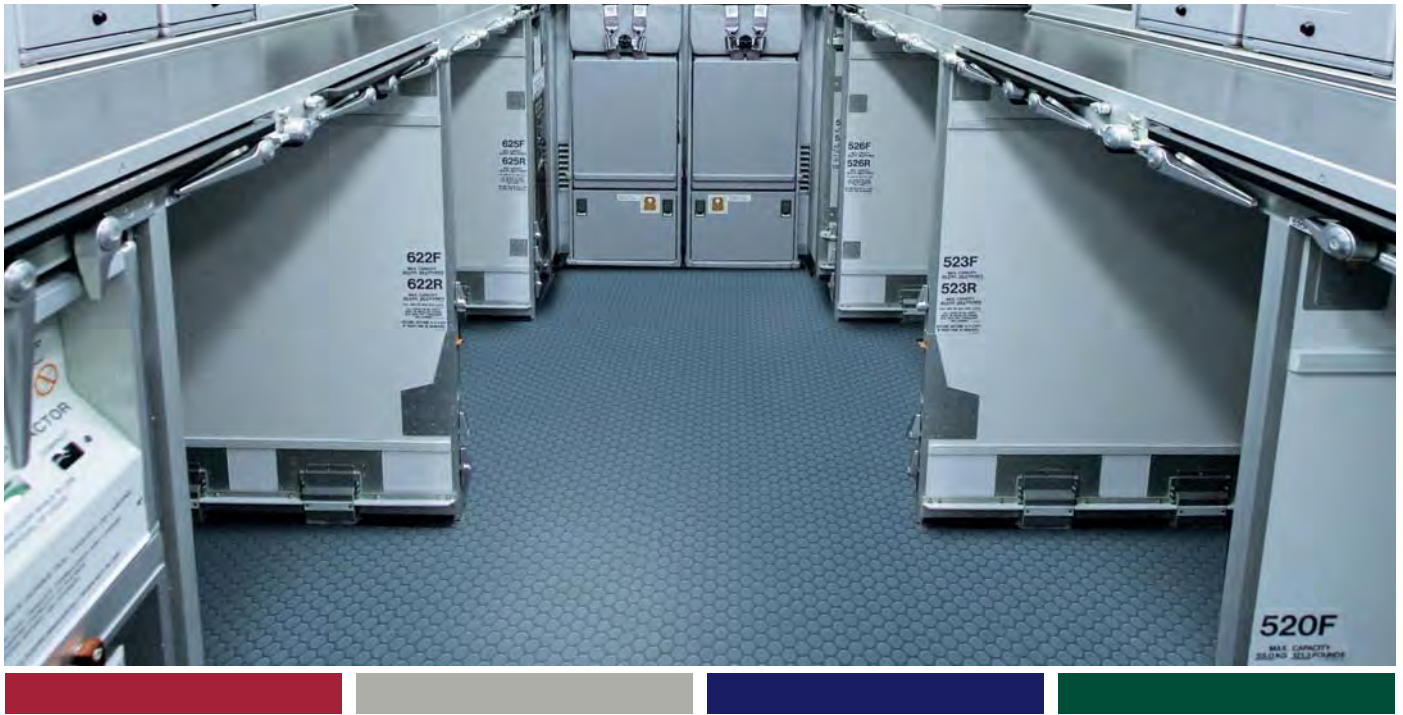


The background of the entire image is a dark blue, textured surface with a repeating pattern of circular, raised elements. Two white paper airplanes are positioned in the lower half of the frame, one slightly above and to the right of the other, as if they are flying or about to take off. The overall aesthetic is modern and industrial.

**LONSEAL<sup>®</sup>**  
AIRCRAFT FLOORING



## WHILE OTHERS MEET THE STANDARDS ... ...LONSEAL® FLIES ABOVE IT

- Custom coloring and patterning available upon request
- 72 in. (1.83 m) - 96 in. (2.44 m) wide rolls available
- REACH compliant formulation
- Featherweight feature
- Meets FAR 25.853a & FAR 25.793
- Meets Boeing D643A504 (LONCOIN II FEATHERWEIGHT)

As the leader in resilient vinyl flooring, Lonseal has been providing the aviation industry with unparalleled products and service for over 45 years.

Our distinctive selection of embossed and smooth designs comes in four collections: AXIS, CIRRUS, HALO, and MIRAGE. We go the extra mile to meet our aircraft clients' needs by offering custom coloring and patterning, wider sheet widths, and continually updating our product stock to ensure the fastest order shipment possible.

Lonseal's clients include airlines, manufacturers and MROs. Our products can be found in the entrance, galley, flight deck and lavatory areas of nearly every type of aircraft. We also meet most major-manufacturer material specifications and FAA safety standards (including FAR 25.853a and FAR 25.793).

From jumbo passenger jets to cargo carriers, and from charter helicopters to private planes, Lonseal's aircraft flooring has an unparalleled range of surfaces such as moisture resistance, slip resistance, sound dampening, and flame spread control that have proven themselves in countless installations. Our wide-width sheet vinyl makes seam welding virtually obsolete and our proven multi-layer technology protects product color and pattern fidelity against both the toughest traffic and the test of time. This ensures Lonseal's resilient finishes durable in every kind of environment.

Lonseal products also meets the criteria outlined by REACH (Registration, Evaluation, Authorization and Restriction of Chemicals), the European Union regulation that addresses the production and use of chemical substances. REACH is quickly becoming a worldwide production standard and Lonseal is pleased to be at the forefront of this important initiative.

Our aircraft flooring also meets FAA requirements FAR 25.853a (12-second vertical flammability test) and FAR 25.793 (factor sliding friction). The LONCOIN II FEATHERWEIGHT under the AXIS collection meets Boeing D643A504.

# AXIS COLLECTION

Axis is an embossed product collection featuring differently scaled coin-stampings that provide a variety of choice in terms of color and design options as well as outstanding traction which aids in reducing the risk of slipping.

## LONCOIN II FEATHERWEIGHT

Constructed in three layers with excellent high-traction, sound-absorption and dimensional stability properties, **LONCOIN II FEATHERWEIGHT** still manages to be 30% lighter than standard non-textile flooring products, potentially increasing fuel efficiency.

**FEATURES** (sizes shown are nominal)

**Roll Width:** 72 in. (1.83 m) or 96 in. (2.44 m)

**Roll Length:** 60 ft. (18.3 m)

**Overall Thickness:** 0.091 in. (2.3 mm)

**Wear Layer Thickness:** 0.031 in. (0.8 mm)

**Weight:** 82 oz/yd<sup>2</sup> (2780 g/m<sup>2</sup>)

**Meets FAA requirements**

FAR 25.853a — 12-Second Vertical Flammability Test

FAR 25.793 — Factor of Sliding Friction

**Meets Boeing D643A504**



9822  
BROWN



9823  
BLACK



9883  
SONIC GRAY



9891  
DARK BLUE



9893  
MEDIUM GRAY



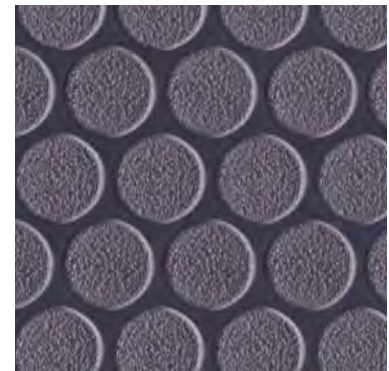
9895  
NAVY BLUE



9896  
PURPLE BLUE



9899  
INDIGO



9887

CERULEAN BLUE

Cerulean Blue is an iridescent color shifting from gray to blue as the angle of view changes. Please request for a sample swatch for color accuracy.

## LONPOLARIS

The multi-colored fleck patterns in **LONPOLARIS** add a unique sense of style to the coin embossing that also helps mask routine dirt and scuffing.

**FEATURES** (sizes shown are nominal)

**Roll Width:** 96 in. (2.44 m)

**Roll Length:** 60 ft. (18.3 m)

**Overall Thickness:** 0.091 in. (2.3 mm)

**Wear Layer Thickness:** 0.031 in. (0.8 mm)

**Weight:** 89 oz/yd<sup>2</sup> (3018 g/m<sup>2</sup>)

**Meets FAA requirements**

FAR 25.853a — 12-Second Vertical Flammability Test

FAR 25.793 — Factor of Sliding Friction



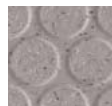
9195  
CAROLINA BLUE



9150  
NOIR



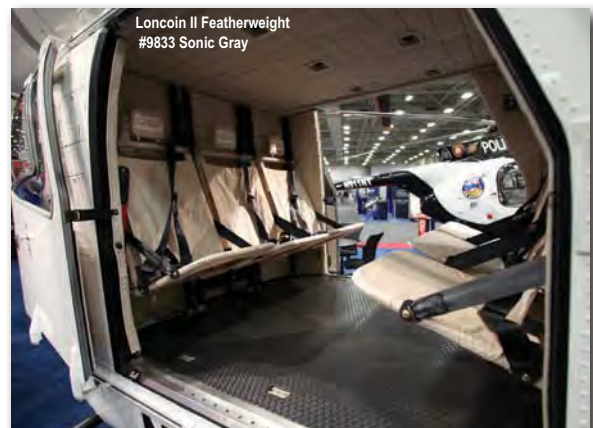
9154  
TUSCAN TAN



9157  
ROMAN SILVER



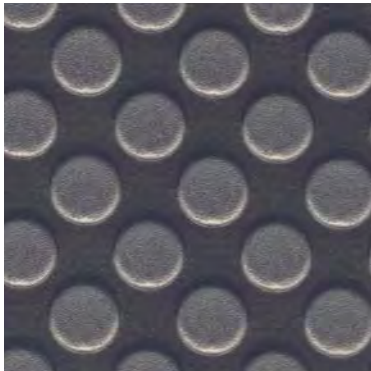
9193  
RAIN



Note: Due to printing process limitations, printed colors may not match the actual flooring colors. If color match is critical, please request a sample (800-832-7111/310-830-7111). Always refer to our website for the most recent color choice. [www.lonsealspecialty.com](http://www.lonsealspecialty.com)

# AXIS COLLECTION

## LONCOMPASS

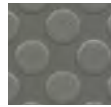


9352  
DENIM

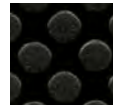
Denim is an iridescent color shifting from gray to blue as the angle of view changes. Please request for a sample swatch for color accuracy.



9347  
CAMEL



9348  
GRAYSTONE



9353  
ASPHALT



9395  
YALE BLUE

The wider coin spacing pattern and bolder colors of **LONCOMPASS** makes it an eye-catching option for both large and small spaces.

### FEATURES (sizes shown are nominal)

**Roll Width:** 72 in. (1.83 m)

**Roll Length:** 60 ft. (18.3 m)

**Overall Thickness:** 0.091 in. (2.3 mm)

**Wear Layer Thickness:** 0.031 in. (0.8 mm)

**Weight:** 88 oz/yd<sup>2</sup> (2984 g/m<sup>2</sup>)

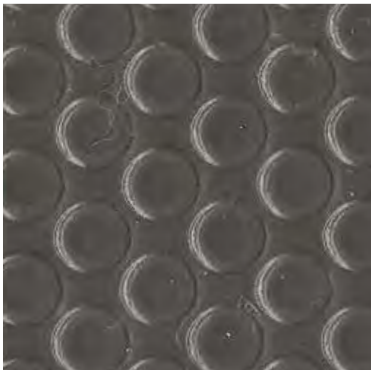
### Meets FAA requirements

FAR 25.853a — 12-Second Vertical Flammability Test

FAR 25.793 — Factor of Sliding Friction

## LONEQUATOR

Formally Lonpetite Featherweight



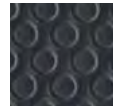
9914  
STORMY SKY



9922  
HILLCREST TAN



9983  
BLACK STAR



9995  
SANTORINI BLUE

**LONEQUATOR** offers a twist on Lonseal's coin-stamp offerings by featuring a matte surface and smaller patterning for greater subtlety and a more contemporary elegance.

### FEATURES (sizes shown are nominal)

**Roll Width:** 96 in. (2.44 m)

**Roll Length:** 60 ft. (18.3 m)

**Overall Thickness:** 0.091 in. (2.3 mm)

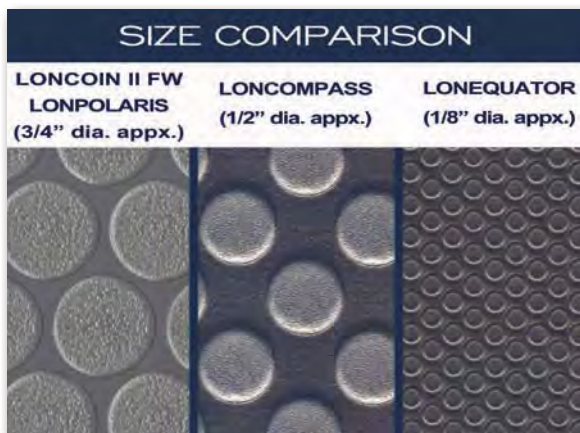
**Wear Layer Thickness:** 0.031 in. (0.8 mm)

**Weight:** 82 oz/yd<sup>2</sup> (2780 g/m<sup>2</sup>)

### Meets FAA requirements

FAR 25.853a — 12-Second Vertical Flammability Test

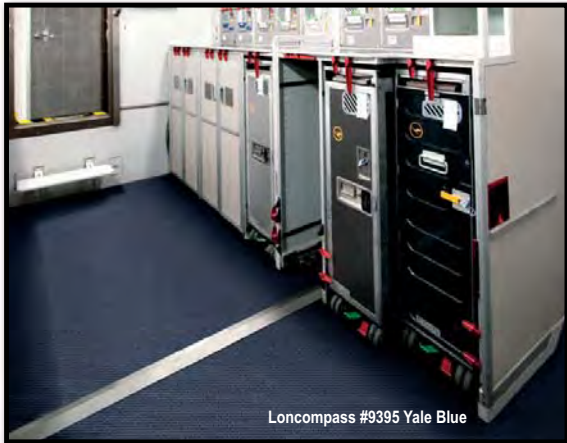
FAR 25.793 — Factor of Sliding Friction



Note: Due to printing process limitations, printed colors may not match the actual flooring colors. If color match is critical, please request a sample (800-832-7111/310-830-7111). Always refer to our website for the most recent color choice. [www.lonsealspecialty.com](http://www.lonsealspecialty.com)



Lonvirga #9087 Caviar



Loncompass #9395 Yale Blue



Lonstratus #9332 Timberwolf



Loncoin II Featherweight #9893 Medium Gray



Loncoin II Featherweight  
#9883 Sonic Gray

# CIRRUS COLLECTION

A variety of intriguingly realistic wood looks comprise the Cirrus Collection, from the realistic planking of Lonvirga to the more stylized grain designs of the Lonmistrallines. The Cirrus Collection is an elegant and natural palette for aircraft cabins.

## LONVIRGA

**LONVIRGA** is an astonishingly realistic wood grain look that adds an intriguing design touch to aircraft interior spaces, particularly lavatories and private cabins.



9089  
CUMIN



9097  
CHESTNUT



9081  
CINNAMON



9087  
CAVIAR

### FEATURES (sizes shown are nominal)

**Roll Width:** 72 in. (1.83 m)

**Roll Length:** 60 ft. (18.3 m)

**Overall Thickness:** 0.080 in. (2.0 mm)

**Wear Layer Thickness:** 0.020 in. (0.5 mm)

**Weight:** 72 oz/yd<sup>2</sup> (2441 g/m<sup>2</sup>)

### Meets FAA requirements

FAR 25.853a — 12-Second Vertical Flammability Test

FAR 25.793 — Factor of Sliding Friction

## LONMISTRAL

**LONMISTRAL's** linear pattern is not only visually extraordinary but also serves to mask dirt and other blemishes. The exotic colors and patterning bring a touch of class and warmth to otherwise cool industrial interiors.



9060  
PAYNE'S GRAY

### FEATURES (sizes shown are nominal)

**Roll Width:** 72 in. (1.83 m)

**Roll Length:** 60 ft. (18.3 m)

**Overall Thickness:** 0.080 in. (2.0 mm)

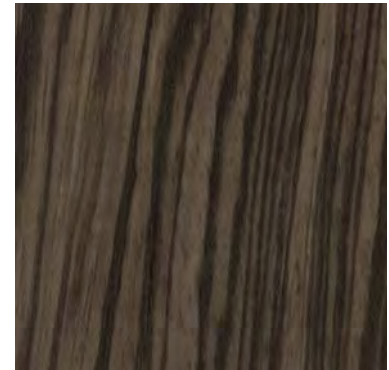
**Wear Layer Thickness:** 0.020 in. (0.5 mm)

**Weight:** 72 oz/yd<sup>2</sup> (2441 g/m<sup>2</sup>)

### Meets FAA requirements

FAR 25.853a — 12-Second Vertical Flammability Test

FAR 25.793 — Factor of Sliding Friction

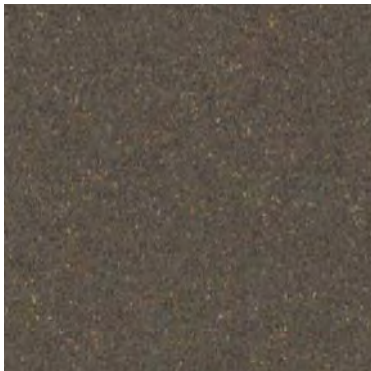


9059  
ESPRESSO

## HALO COLLECTION

The Halo Collection assists the aviation industry in making environmentally sustainable aircrafts. Recognized for its eco-friendly features, it also provides the lowest VOC properties in the market and contributes to superior indoor cabin air quality.

### LONSOLSTICE



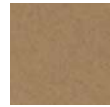
9233  
GRIDELIN



9215  
SAGE



9219  
GREIGE



9235  
KHAKI

As Lonseal's foremost eco-friendly product, **LONSOLSTICE** subtle design suggests a dense cork look and incorporates small flecks of coloring to provide depth and grit.

**FEATURES** (sizes shown are nominal)

**Roll Width:** 96 in. (2.44 m)

**Roll Length:** 60 ft. (18.3 m)

**Overall Thickness:** 0.080 in. (2.0 mm)

**Wear Layer Thickness:** 0.031 in. (0.8 mm)

**Weight:** 78 oz/yd<sup>2</sup> (2645 g/m<sup>2</sup>)

**Meets FAA requirements**

FAR 25.853a — 12-Second Vertical Flammability Test

FAR 25.793 — Factor of Sliding Friction

## MIRAGE COLLECTION

The Mirage Collection features a cloth design that gives a classic, timeless touch to any aircraft space. An abstracted take on a fabric look, the collection's hue variations and slightly stubbed texture provide a sense of strength and durability.

### LONSTRATUS



9332  
TIMBERWOLF



9330  
ALMOND



9331  
TAWNY



9336  
CESIOUS

**LONSTRATUS** features a loose weave design that gives a hip, stylish touch to any aircraft space. An abstracted take on a fabric look, Lonstratus suggests the delicacy of linen cloth while its hue variations and slightly stubbed texture provide a sense of strength and durability.

**FEATURES** (sizes shown are nominal)

**Roll Width:** 72 in. (1.83 m)

**Roll Length:** 60 ft. (18.3 m)

**Overall Thickness:** 0.080 in. (2.0 mm)

**Wear Layer Thickness:** 0.020 in. (0.5 mm)

**Weight:** 72 oz/yd<sup>2</sup> (2441 g/m<sup>2</sup>)

**Meets FAA requirements**

FAR 25.853a — 12-Second Vertical Flammability Test

FAR 25.793 — Factor of Sliding Friction

# LONSEAL®: FLYING ABOVE THE STANDARD



Lonseal® strives to provide its customers with the finest quality, environmentally-conscious products. We proactively research what lies ahead in aviation to make sure our product meets the highest industry standards in manufacturing and distribution. Our goal is to continually improve our processes to provide outstanding products and unsurpassed service that, together, deliver premium value to our customers.

**Lonseal flooring is manufactured in a facility that is certified to ISO 9001, JIS Q 9100, and ISO 14001 standards.**

**ISO 9001** is the standard that sets the criteria for developing a quality management system (QMS) in an organization. It is used as the basis for the development of the International Aerospace Quality Group (IAQG) published standards AS9100 and AS9120.

**JIS Q 9100** is equivalent to **AS9100**, and sets the criteria for an organization to develop a QMS related to the aviation, space, and defense industries. This standard helps an organization develop processes to monitor and continually improve its design, development, operation, and production aspects. These processes are used to ensure customer satisfaction and that received products meet all their necessary requirements.

**ISO 14001** is the standard that sets the criteria for developing an environmental management system (EMS) in an organization. It is meant to help an organization manage its impact on the environment, helping to decrease pollution and waste through monitoring and continual improvement.

**Lonseal flooring is distributed from a facility that is certified to ISO 9001 and AS9120 standards.**

Similar to AS9100 (JIS Q 9100), **AS9120** focuses on organizations that are Stockist Distributors. While intended for distributors to the aviation, space, and defense industries, it still focuses on the development of processes that can be monitored and continually improved to ensure customer satisfaction and that received products meet all their necessary requirements.

Lonseal® is an environmentally-conscious manufacturer and provides the most functional, sustainable, and durable products available. While other aviation flooring manufacturers have made great progress in meeting industry standards, Lonseal is never satisfied with the status quo. We are always striving to raise the bar with more eco-friendly products through the development of our **GreenVinyl®** formulations, which includes **GreenAir®** and **GreenMedic®**. The GreenAir family of products is Lonseal's suite of low VOC and FloorScore® - certified resilient sheet vinyl products which support Indoor Air Quality (IAQ). We have the lowest VOC properties of any vinyl flooring product in the market. Exclusive to Lonseal, GreenMedic is an anti-microbial formulation that increases infection control.

Lonseal became an aviation industry leader because of our featherweight feature in our aircraft flooring collection. Our aircraft flooring is more than 30% lighter than standard NTF products. Our material's light weight and our high strength-to-weight ratio are most often specified by many aircraft designers and airplane manufacturers.







For complimentary samples, please call 800.832.7111.  
Outside the U.S., call: +1 310.830.7111

Lonseal, Inc., 928 E. 238th Street, Carson, CA 90745 USA  
310.830.7111 Fax: 310.830.9986  
[www.lonsealspecialty.com](http://www.lonsealspecialty.com)

v. May 2017