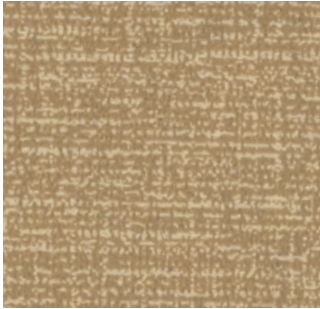


**LONSEAL**  
FLOORING



**LONECO® LINEN**

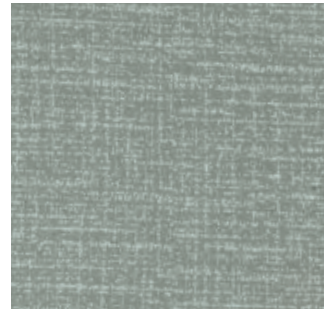




330 Ecrú



335 Artichoke



336 Porpoise



331 Oatmeal



332 Heather



333 Ash



334 Wheat

Note: Due to printing process limitations, colors depicted here may not match the actual flooring colors. To request a sample, please call (800 832 7111 or 310 630 7111).

## LONECO® LINEN

### THE ELEGANCE OF WEAVE, THE EASE OF VINYL

If you are seeking an elegant weave look but want the maintenance ease of resilient sheet vinyl, your search is over...

Presenting: **Loneco® Linen.**

Utilizing the same formulation and 50% recycled content of our popular Loneco® product line, Loneco® Linen features a loose woven design that gives a hip, stylish touch to any interior space. As an abstracted take on a fabric look, Loneco® Linen suggests the delicacy of cloth while its hue variations and slightly stubbed texture provide a sense of strength and durability.

Loneco Linen comes in seven attractive neutral colors that are suitable for a range of settings including healthcare, corporate, retail and hospitality.

Additionally, Loneco® Linen features Lonseal's exclusive **Topseal** formulation, a factory-applied urethane ("no wax") finish that protects the floor and simplifies routine maintenance.

For a tailored look that instantly adds a touch of chic, Loneco® Linen is a custom fit.

# LONSEAL FLOORING



Front and back cover: Self-Regional Hospital, Greenwood, SC | Brian Dressler Photography

Lonseal | 928 East 238th Street | Carson, California 90745  
p. 310 830 7111 | 800 832 7111 | info@lonseal.com | www.lonseal.com

